

Continuous light element, with integrated LED, blue, 230 V AC,
Diameter 50 mm



General technical data	
Product brand name	SIRIUS
Product designation	Continuous light element
Design of the optical signal	continuous light
Type of voltage of the operating voltage	AC
Operating voltage	
• 1 at AC at 50 Hz rated value	230 V
• 1 at AC at 60 Hz rated value	230 V
Relative positive tolerance of the operating voltage	10 %
Relative negative tolerance of the operating voltage	-10 %
Consumed current maximum	35 mA
Service life of LED	100 000 h
Material	PC
Color	blue
Mounting type	Bayonet
Reference code	
• acc. to DIN EN 61346-2	P
• acc. to DIN EN 81346-2	P

Mechanical data

Outer diameter of the signal column element 50 mm

Lamp

Product component Light source Yes

Type of light source LED

Light intensity 0.09 cd

Light intensity 0.05 ... 0.13 cd

Ambient conditions

Ambient temperature during operation -20 ... +50 °C

Protection class IP IP54

Height 67 mm

Width 52 mm

Certificates/ approvals

General Product Approval



UL

EMC



RCM

Declaration of Conformity



EG-Konf.

other

[Miscellaneous](#)

[Confirmation](#)

Further information

Information- and Downloadcenter (Catalogs, Brochures,...)

www.siemens.com/sirius/catalogs

Industry Mall (Online ordering system)

<https://mall.industry.siemens.com/mall/en/en/Catalog/product?mlfb=8WD4250-5AF>

Cax online generator

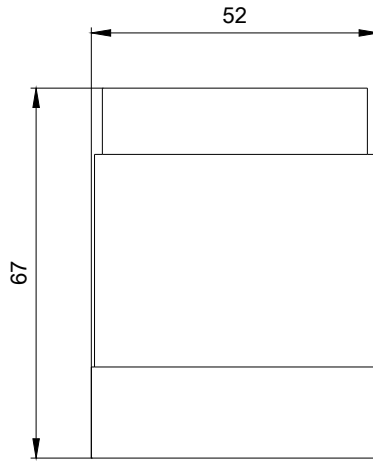
<http://support.automation.siemens.com/WW/CAXorder/default.aspx?lang=en&mlfb=8WD4250-5AF>

Service&Support (Manuals, Certificates, Characteristics, FAQs,...)

<https://support.industry.siemens.com/cs/ww/en/ps/8WD4250-5AF>

Image database (product images, 2D dimension drawings, 3D models, device circuit diagrams, EPLAN macros, ...)

http://www.automation.siemens.com/bilddb/cax_de.aspx?mlfb=8WD4250-5AF&lang=en



last modified:



W9.4444; 8WD42.-..._ALL
W6.8611; 8WD42.-..._ALL
04/27/2020