

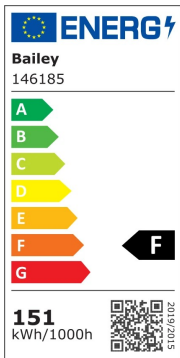


## CM-T G12 150W 830 WDL

Article number: 146185

BAI CM-T G12 95V 150W 3000K 14000lm 22x110mm V±45° CRI80-90 12.000h Ceramic Metal Halide CMH-T CDM-T CMI-T HRI-T RCC-T Compact halogen metal halide lamp

The Ceramic Metal Halide (CMH/CDM) lamps from Bailey Lights continue to offer possibilities for lighting design where a LED can't be used yet. These lamps provide excellent overall light quality, excellent lumen maintenance, efficiency while maintaining long life and reliability. The lamp base is ceramic. These lamps are often used in shops, shop windows and museums.



### General ETIM properties

|               |   |
|---------------|---|
| ETIM group    | Lamps                                       |
| ETIM class    | Halogen metal halide lamp without reflector |
| Name          | CM-T G12 150W 830 WDL                       |
| Brand         | Bailey                                      |
| Productseries | HID   |
| Producttype   | CM-T G12                                    |

## ETIM specifications

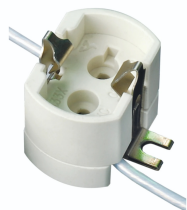
|  |                     |
|--|---------------------|
| Socket   | G12                 |
| Lamp power [W]   | 150                 |
| Colour temperature [K]                                       | 3000                |
| Luminous flux [lm]   | 14000               |
| Lamp voltage [V]   | 95 - 95             |
| UV protection  | Yes                 |
| Colour rendering index CRI                                   | 80-89               |
| Colour of light according to EN 12464-1                      | Warm white < 3300 K |
| Lamp efficacy [lm/W]   | 93                  |
| Lamp shape   | Tube, single-ended  |
| Material discharge tube                                      | Ceramics            |
| Burning position   | Random              |
| Diameter [mm]  | 22                  |
| Total length [mm]  | 110                 |
| External ignitor required                                    | Yes                 |
| External ballast required                                    | Yes                 |
| Closed luminaire required                                    | Yes                 |
| Sun tanning lamp   | No                  |
| Colour   | Colourless          |
| Colour of light  | 830                 |
| Model  | Clear               |
| Lamp designation   | Other               |
| Weighted energy consumption in 1000 hours [kWh]              | 151                 |
| Average nominal lifetime [h]                                 | 12000               |
| Energy efficiency class according to EU regulation 2019/2015 | F                   |

## Alternative articles



HMC150830T/01  
MASTERC CDM-T 150W/830  
G12

## Complementary articles



92600036349  
Lampholder G12 4A 750V  
T300°C 300mm



92200236499  
POWERTRONIC INTELLIGENT  
PTi I 150/220...240 I