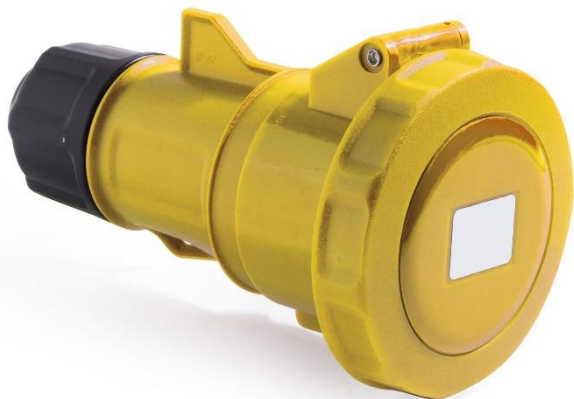


Features

- Manufactured on nylon 6 ABS
- Robust design
- High compatibility

Mobile Industrial Socket

RS Stock No.: 2144194



RS Professionally Approved Products bring to you professional quality parts across all product categories. Our product range has been tested by engineers and provides a comparable quality to the leading brands without paying a premium price.

Product Description

Introducing the RS Pro range of industrial sockets, ideal as a reliable and robust solution for high performance power applications. The housing material is made of nylon 6 and ABS, providing excellent mechanical strength and durability and ensuring complete reliability and optimum performance for reliable power distribution. In addition, the IP54 protection rating provides a splash-proof housing and the easy-to-install design saves time and effort during configuration and installation of the female connector. These industrial male connectors are ideal for use in demanding environments and industrial applications where performance and quality are critical.

General Specifications

Poles	3P (2P+T)
Clock Position	4h
Operating Temperature	-25°C / 40°C

Mechanical Specifications

Glow Wire Test	850°C live parts supports / 650°C other parts
Material	PA6

Electrical Specifications

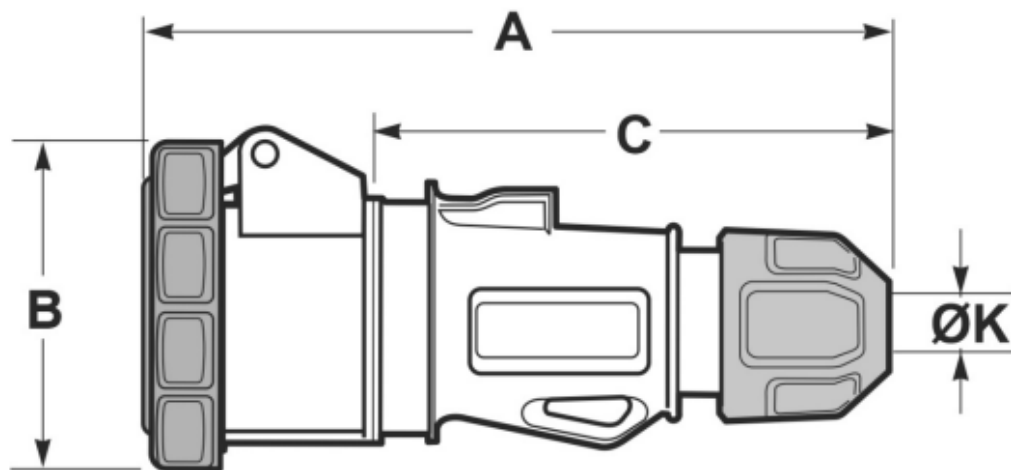
Rated Current	16A
Rated Voltage	100-130V
Rated Frequency	50/60Hz
Insulating Resistance	>10MΩ@500Vdc
Dielectric Strength	2,5kV

Protection

IP Protection Degree	IP66/67
----------------------	---------

Approvals

Declarations	Declaration of Conformity
Standards Met	IEC/EN 60309-1, IEC/EN60309-2



Dimensions in mm

A	B	C	D	E	F	G	ØK
157	80	110	-	-	-	-	6-15