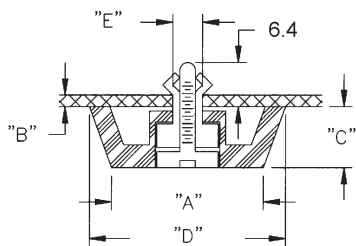
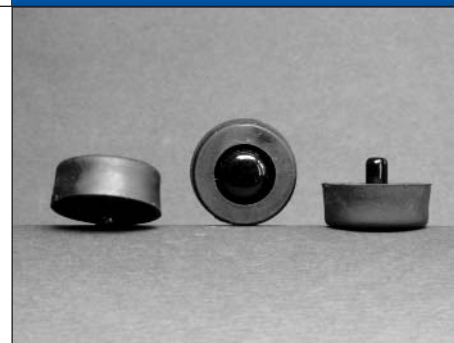
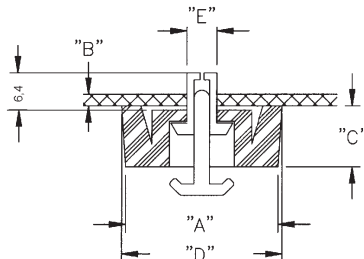


FORM 1



FORM 2



FF

GEHÄUSEFUSS MIT SPREIZNIETE

Artikel Nr.	Bohrung "E" mm	"B" mm	"A" mm	"C" mm	"D" mm	Form.			
FF-001B	5.0 - 5.1	1.0 - 2.3	20.0	14.0	24.0	1			
FF-004B		1.0 - 2.3	18.0	10.0	20.0				
FF-015B		0.8 - 2.0	28.0	15.0	30.0				
FF-003-P3X5.5B	3.1 - 3.2	0.8 - 1.8	13.5	5.5	14.2	2			
FF-005-P4X5B	4.1 - 4.2	0.8 - 1.8	20.0	4.2	21.0				
FF-005-P4X6B		1.8 - 2.8							
FF-005-P4X7B		2.9 - 3.7							
FF-005-P4X8B		3.8 - 4.8							
FF-006-P4X6B	4.1 - 4.2	0.6 - 1.0	14.0	6.0	15.0				
FF-006-P4X7B		1.0 - 2.0							
FF-006-P4X8B		2.0 - 3.1							
FF-006-P5X6.5B	5.1 - 5.2	0.8 - 1.2	20.0	8.0	21.0				
FF-008-P4X6B	4.1 - 4.2	0.8 - 1.8							
FF-008-P4X7B		1.9 - 2.8							
FF-008-P4X8B		2.9 - 4.0							
FF-009-P4X6B		0.1 - 0.8							
FF-009-P4X7B		0.8 - 2.0							
FF-009-P4X8B		2.1 - 3.1							
FF-010-P4X6B	4.1 - 4.2	0.6 - 1.0					14.0	9.0	15.0
FF-010-P4X7B		1.0 - 2.0							
FF-010-P4X8B		2.0 - 3.1							
FF-010-P5X6.5B	5.1 - 5.2	0.8 - 1.2					10.0	4.0	10.8
FF-010-P5X7.5B		1.2 - 2.2							
FF-013-P3.5X4.5B	3.6 - 3.7	0.5 - 1.2							
FF-013-P3.5X5.5B		1.2 - 2.0							
FF-013-P3.5X6B		1.5 - 2.2							
FF-013-P3.5X7B		2.5 - 3.2							
FF-013-P3.5X8B		3.5 - 4.2							

Material:

Fuß: thermoplastischer Kautschuk
schwarz, UL 94 HB, RMS-76

Befestigungsniete:

Form 1: Acetal - schwarz, UL 94 HB, RMS-14
Form 2: Nylon 6 - schwarz, UL 94 V-2, RMS-28
VPE: 100 Stk.

Bestellinfo:

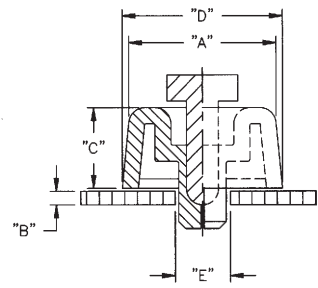
FF	001B
Artikel	Größe

Artikel Nr.	Bohrung "E" ø mm	"B" mm	"A" mm	"C" mm	"D" mm
SFF-018	7.8	0.8 - 1.5	18.0	9.9	20.1
SFF-021		5.0 - 8.0	20.1	6.1	21.1
SFF-023		0.8 - 1.5	23.1	5.1	24.9
SFF-028		0.8 - 1.5	18.0	15.0	20.1



SFF

GEHÄUSEFUSS MIT SPREIBEFESTIGUNG



Material: Fuß: Santoprem - schwarz, UL 94 HB, RMS-42
 Pin: Polypropylen - schwarz, RMS-126
 VPE: 100 Stk.

Bestellinfo:

SFF	018
Artikel	Größe