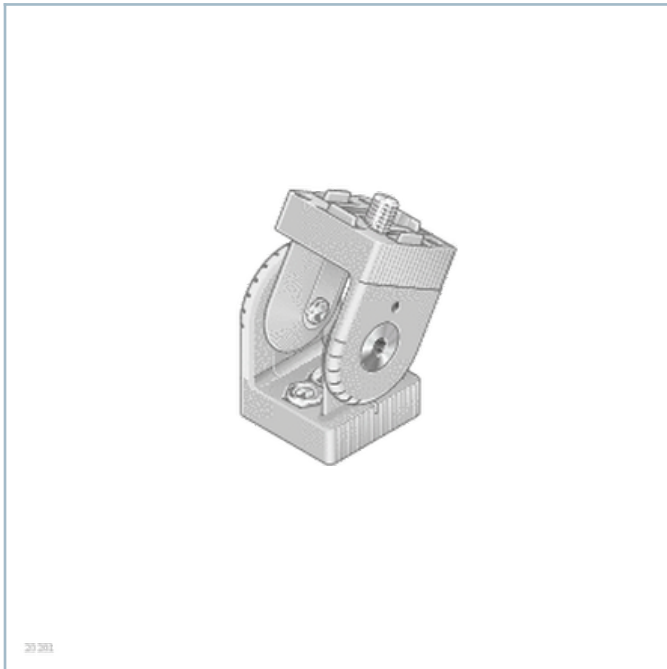


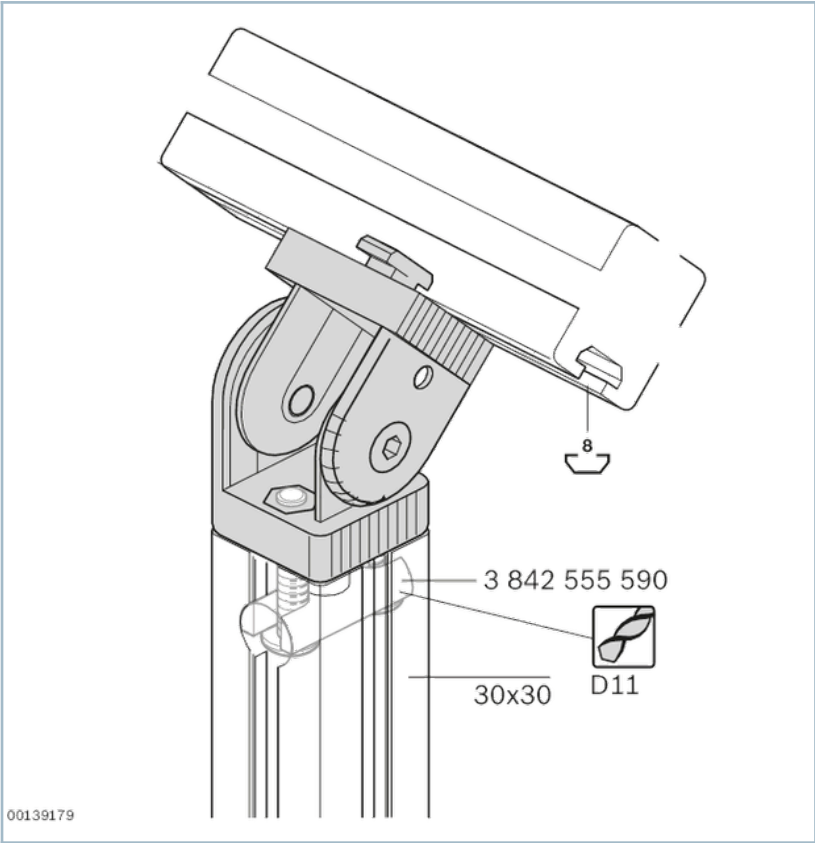
Joint 30x30



- For movable or rigid profile connections at any angle
- Swivel range 182°
- With marking in 15° increments
- Locking by clamping (5 Nm) or fixing with pins (15 Nm)
- Version *designLINE* with special silver paint (RAL 9006) for an especially high-quality design

- Profile finishing: Through-hole D11 for end face profile connections

Product description

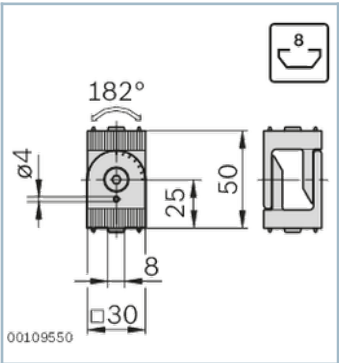


Technical data

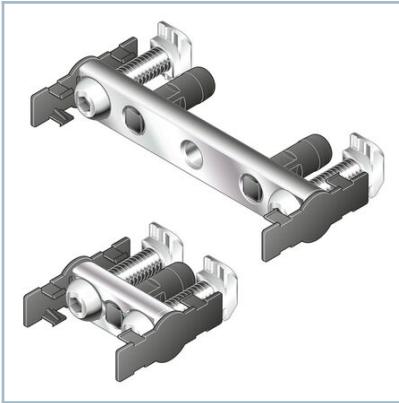
<p>Diagram of the joint showing forces F1 and F2. F1 is the horizontal force and F2 is the vertical force.</p>	F1 (N)	F2 (N)
	10000	600

Dimensions

Joint 30x30



Accessories



Bolt connector



- For the right-angled connecting of two profiles
- Designed for heavy loads and torsion
- Can be installed in closed frames
- Profile finishing: through-hole D11, D17





Bolt connector

- For the right-angled connecting of two profiles
- Designed for heavy loads and torsion
- Can be installed in closed frames
- Profile finishing: through-hole D11, D17

Delivery notes

FS1	FS2
 <p>DIN 7984 M6x12</p> <p>8</p>	 <p>DIN 934 M5</p>

Ordering codes

	Groove	ESD	FS	No.
Joint 30x30 standard	8		2xFS1, 4xFS2	3842502683
Joint 30x30 <i>designLINE</i>	8		2xFS1, 4xFS2	3842538683