

**Product number CX15577\_GABRIELLA-45-S**

Family	Gabriella	FWHM	(simulated) 12
Type	Pack	Efficiency	(simulated) 93 %
LED	XM-L RGB	cd/Im	(simulated) 15.444
Color	Clear	Gerber File	Available
Diameter	45 mm		
Height	30.4 mm		
Style	Round		
Optic Material	PMMA		
Holder Material	-		
Fastening	["tape", "pin", "screw"]		
Status	Production ready		

**Product number CN15815\_GABRIELLA-45-M**

Family	Gabriella	FWHM	(simulated) 23
Type	Pack	Efficiency	(simulated) 85 %
LED	XM-L RGB	cd/Im	(simulated) 4.500
Color	Clear	Gerber File	Available
Diameter	45 mm		
Height	28.9 mm		
Style	Round		
Optic Material	PC,PMMA		
Holder Material	-		
Fastening	["screw"]		
Status	Production ready		

**Product number CX15818\_GABRIELLA-45-M**

Family	Gabriella	FWHM	(simulated) 23
Type	Pack	Efficiency	(simulated) 85 %
LED	XM-L RGB	cd/Im	(simulated) 4.500
Color	Black	Gerber File	Available
Diameter	45 mm		
Height	29.24 mm		
Style	Round		
Optic Material	PMMA		
Holder Material	-		
Fastening	["tape"]		
Status	Production ready		

**Product number CN15529\_GABRIELLA-45-S**

Family	Gabriella	FWHM	12 degrees
Type	Pack	Efficiency	87 %
LED	XM-L RGB	cd/Im	17.000
Color	Clear	Gerber File	Available
Diameter	45 mm		
Height	30.34 mm		
Style	Round		
Optic Material	PMMA		
Holder Material	-		
Fastening	["pin", "screw"]		
Status	Production ready		



## PRODUCT DATASHEET

### Gabriella series

last update 19/1/2018

**NOTE:** The typical divergence will be changed by different color, chip size and chip position tolerance. The typical total divergence is the full angle measured where the luminous intensity is half of the peak value.



## PRODUCT DATASHEET

### Gabriella series

last update 19/1/2018

#### GENERAL INFORMATION

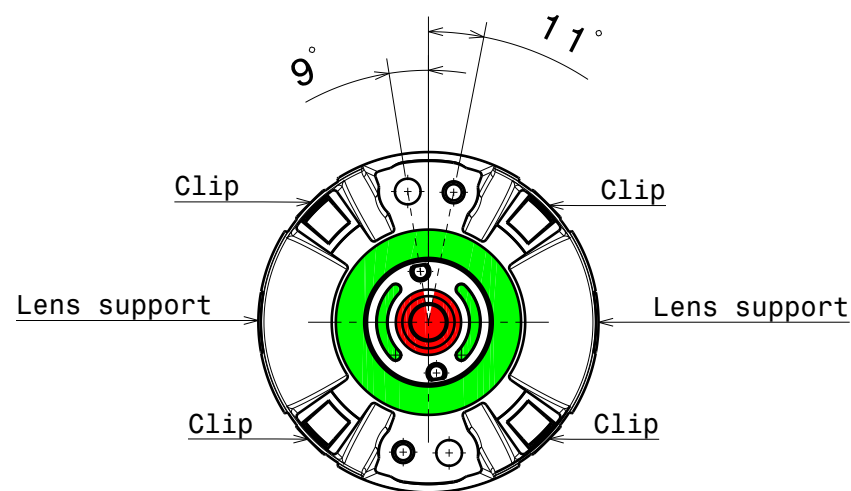
- Product series especially designed & optimized for XM-L RGB series of LEDs.
- Special care taken to make light distribution as uniform as possible.
- Lens material optical grade PMMA with high UV and temperature resistance. Allows use of high current and temperature conditions.

Please find more information about used material from below:

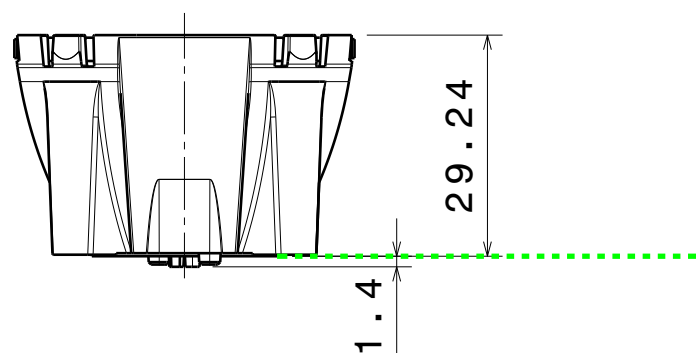
[http://ledil.fi/sites/default/files/Documents/Technical/Material/PMMA%20N%20UL94\\_Yellow%20Card.pdf](http://ledil.fi/sites/default/files/Documents/Technical/Material/PMMA%20N%20UL94_Yellow%20Card.pdf)

<http://ledil.fi/sites/default/files/Documents/Technical/Material/PMMA%20N%20PLEXIGLAS-Datasheet.pdf>

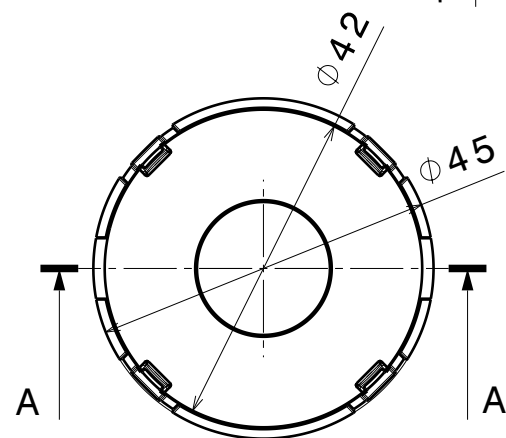
Bottom view  
Scale: 1:1



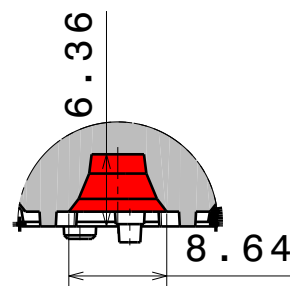
Front view  
Scale: 1:1



Top view  
Scale: 1:1



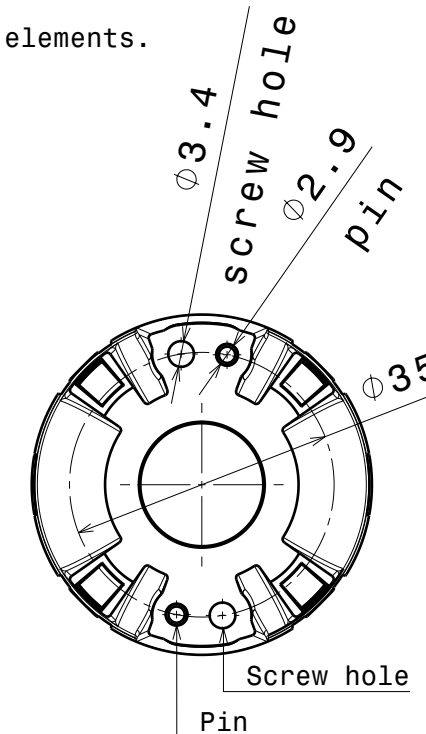
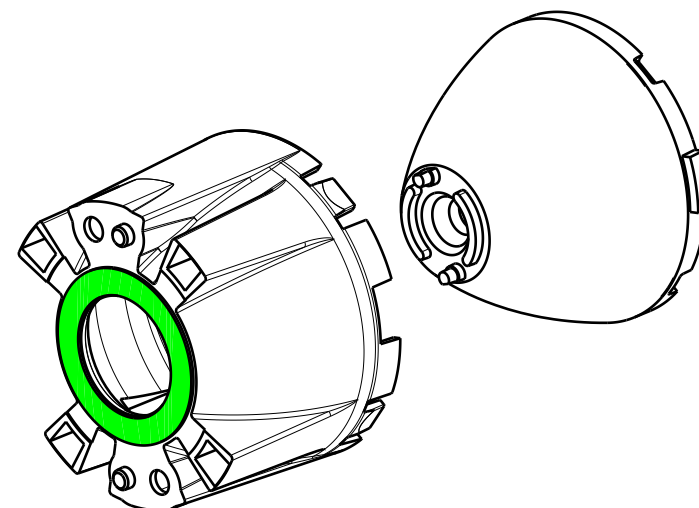
A-A  
Scale: 3:2



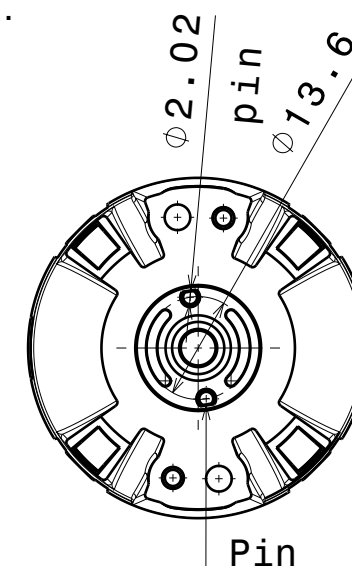
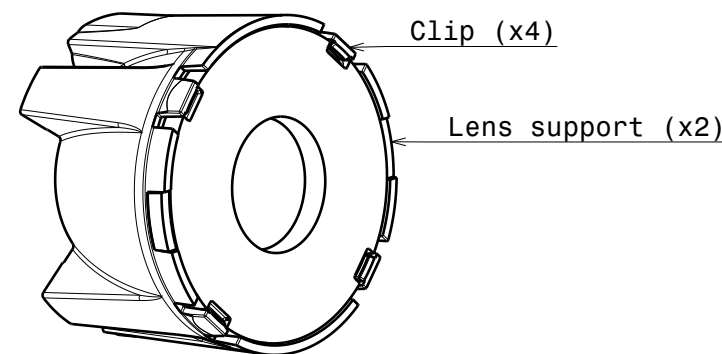
Notes:

- 1. PCB level
- 2. Ensure exact led fitting from [www.ledil.com](http://www.ledil.com) and/or 3d mechanical model to count led structural variation such as LED dome shape and led base size.

1. Place holder on PCB using the holder location pins as guide elements.
2. Holder is fixed in place with the tape.



3. Place lens support features into relative holes in the holder, please note that the location pins on the lens goes through the PCB.
4. Press optic until 4 clips each locked.



INDEX	PART NO	DESCRIPTION	MATERIAL	COLOUR
1	CX15818	GABRIELLA-45-M	Lens PMMA Holder PC	Black

Tolerances if not otherwise shown  
According to DIN ISO 2768-1  
Linear measures:  
Up to 30mm class M, otherwise class C.  
According to DIN ISO 2768-2  
Form and position: class L

LEDiL

Ledil Oy  
Salorankatu 10  
FIN 24240 SALO  
Finland

THIRD ANGLE PROJECTION:



This drawing is the property  
of LEDiL Oy. It may not be  
reproduced, copied or  
communicated without a written  
agreement with LEDiL Oy.

DRAWING TITLE

CX15818\_GABRIELLA-45-M

SIZE PART NUMBER

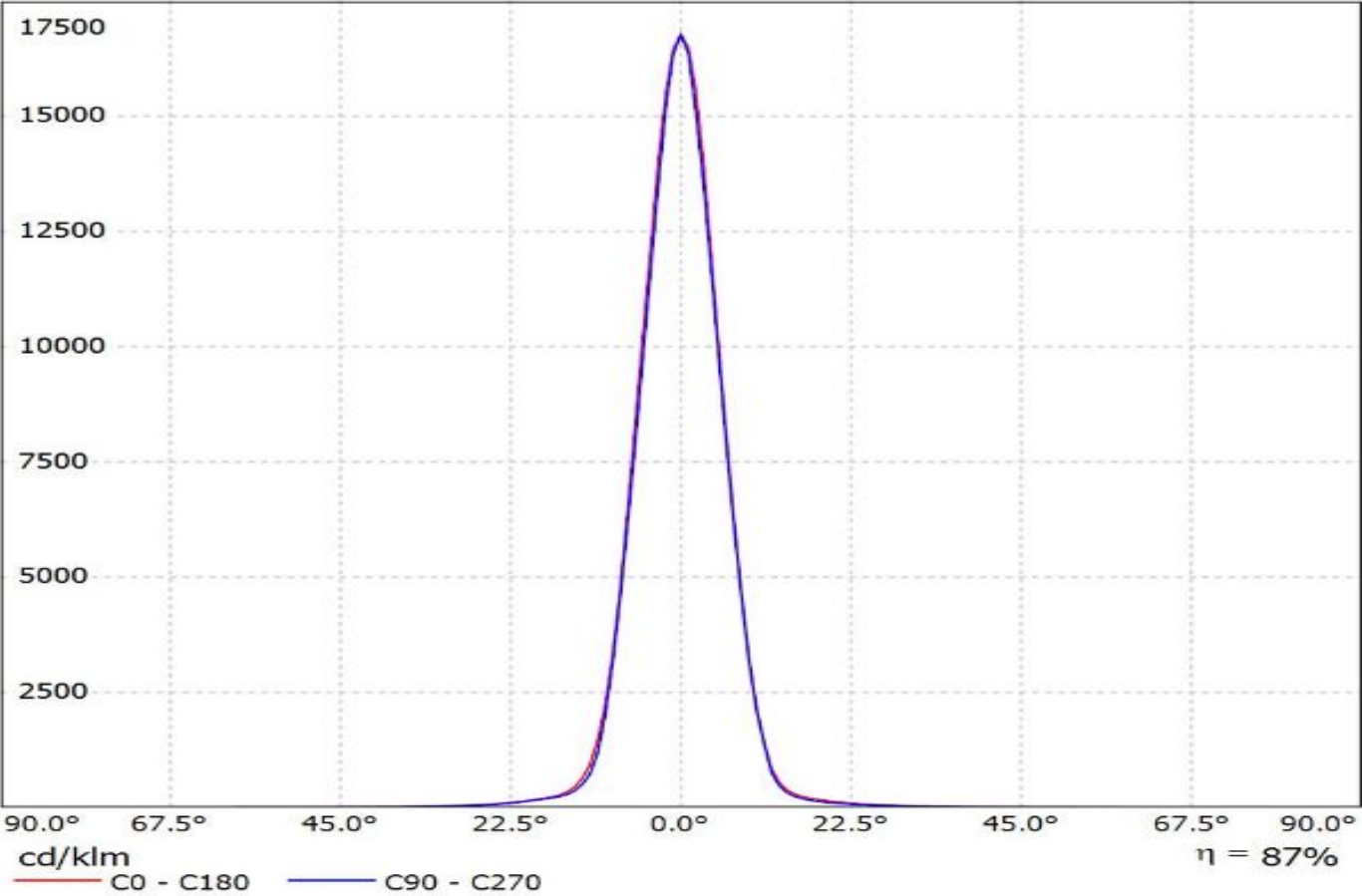
A3

CX15818

SCALE 1:1 WEIGHT - g

SHEET 1/1

Luminaire: Ledil CN15529\_GABRIELLA-45-S\_(XM-L\_RGBW)  
Lamps: 1 x Cree\_XM-L\_RGBW\_218.692lm@250mA\_P=2.753W\_I=0.25A



Luminaire: Ledil CN15529\_GABRIELLA-45-S\_(XM-L\_RGBW)  
Lamps: 1 x Cree\_XM-L\_RGBW\_218.692lm@250mA\_P=2.753W\_I=0.25A

