

EV-T2SC_EMF - Protective cover

1093939

<https://www.phoenixcontact.com/in/products/1093939>



Please be informed that the data shown in this PDF document is generated from our online catalog. Please find the complete data in the user documentation. Our general terms of use for downloads are valid.



CHARX connect basic, Type 2, Protective cover, Accessories, square, Front mounting, Front of fixing holes, housing: black, with self-locking mechanism, for attaching to infrastructure charging sockets, Embossed PHOENIX CONTACT logo, IEC 62196-2, Front-side fixing holes

Product description

Self-closing protective cover for infrastructure charging socket

Your advantages

- Developed and produced in accordance with the IATF 16949 automotive standard and ISO 9001
- Individual branding, thanks to the use your own logo
- Reliable protection of your socket outlet from weather and vandalism
- Extremely easy assembly, thanks to a front-side screw connection
- Reduced assembly work, thanks to the pre-injected seal
- No separate panel mounting frame required

Commercial data

Item number	1093939
Packing unit	1 pc
Minimum order quantity	1 pc
Sales key	*****
Product key	XWBAFC
GTIN	4055626915128
Weight per piece (including packing)	106.5 g
Weight per piece (excluding packing)	105.7 g
Customs tariff number	85366990
Country of origin	PL

EV-T2SC_EMF - Protective cover

1093939

<https://www.phoenixcontact.com/in/products/1093939>



Technical data

Notes

General	Front-side fixing holes
---------	-------------------------

Product properties

Product type	Protective cover for Socket Outlet
Product family	CHARX connect basic
Application	for attaching to infrastructure charging sockets
Design (Protective cover)	square
Type	Accessories
Design	with self-locking mechanism
Affixed logo	Embossed PHOENIX CONTACT logo
Charging standard	Type 2
Charging mode	Mode 3, Case B
Customer variations	On request

Dimensions

Width	85 mm
Height	93.7 mm
Depth	32.5 mm
Width	60 mm
Height	60 mm

Material specifications

Color (Housing)	black (9005)
Material (Housing)	Plastic

Environmental and real-life conditions

Ambient conditions

Degree of protection (Protective cover)	IP54
	IK08
Ambient temperature (operation)	-30 °C ... 50 °C
Ambient temperature (storage/transport)	-40 °C ... 80 °C

Standards and regulations

Standards

Standards/regulations	IEC 62196-2
-----------------------	-------------

Mounting

Mounting type Protective cover	Front mounting (front screw connection)
Fixing screws	Front of fixing holes

EV-T2SC_EMF - Protective cover

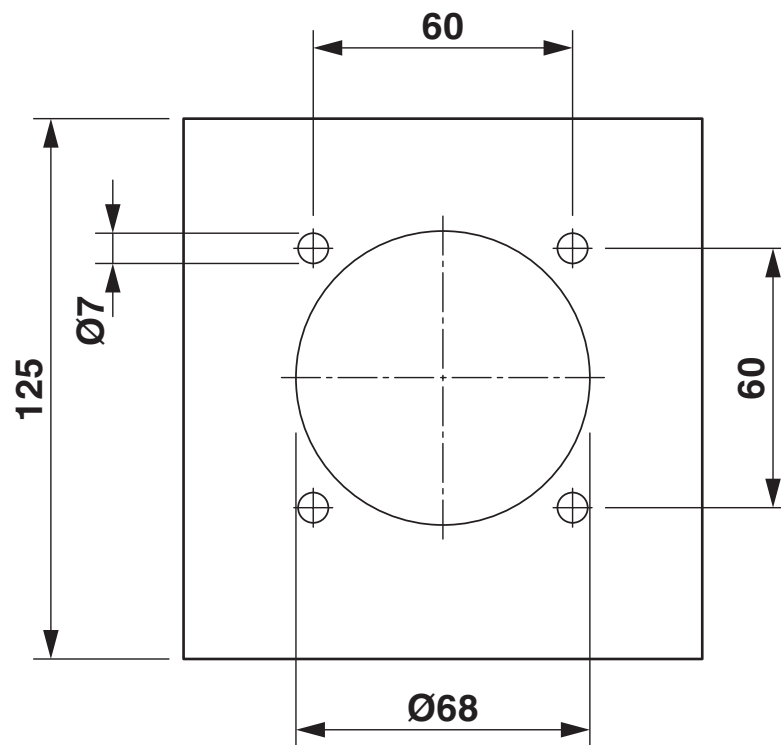
1093939

<https://www.phoenixcontact.com/in/products/1093939>



Drawings

Dimensional drawing



Hole image

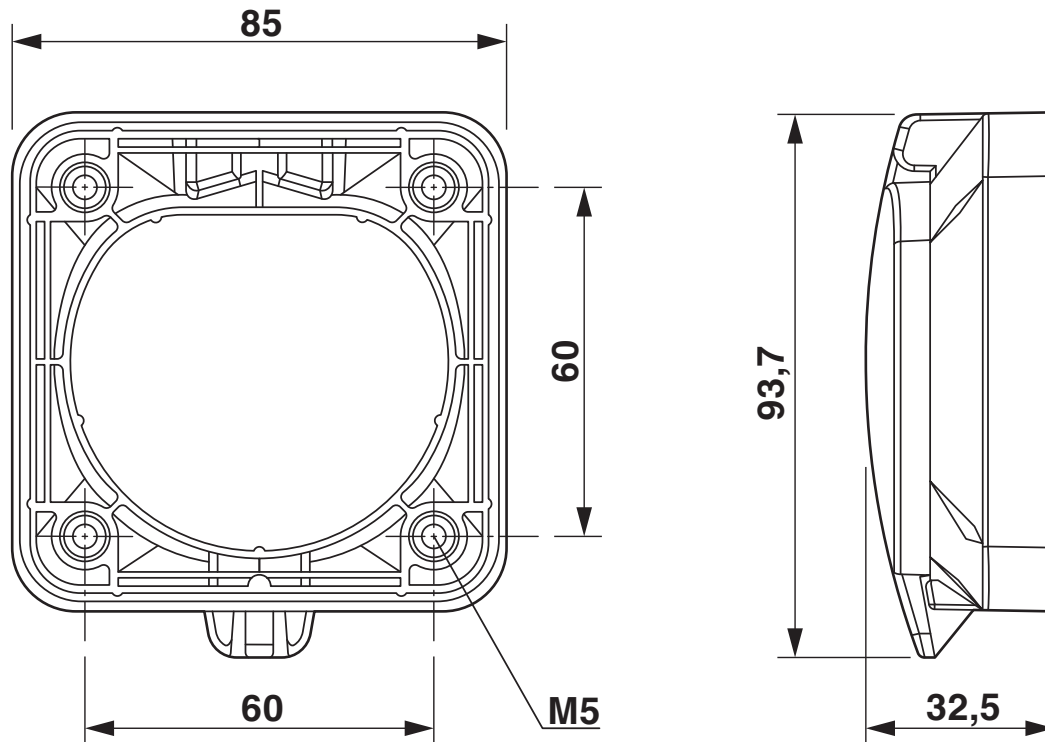
EV-T2SC_EMF - Protective cover

1093939

<https://www.phoenixcontact.com/in/products/1093939>

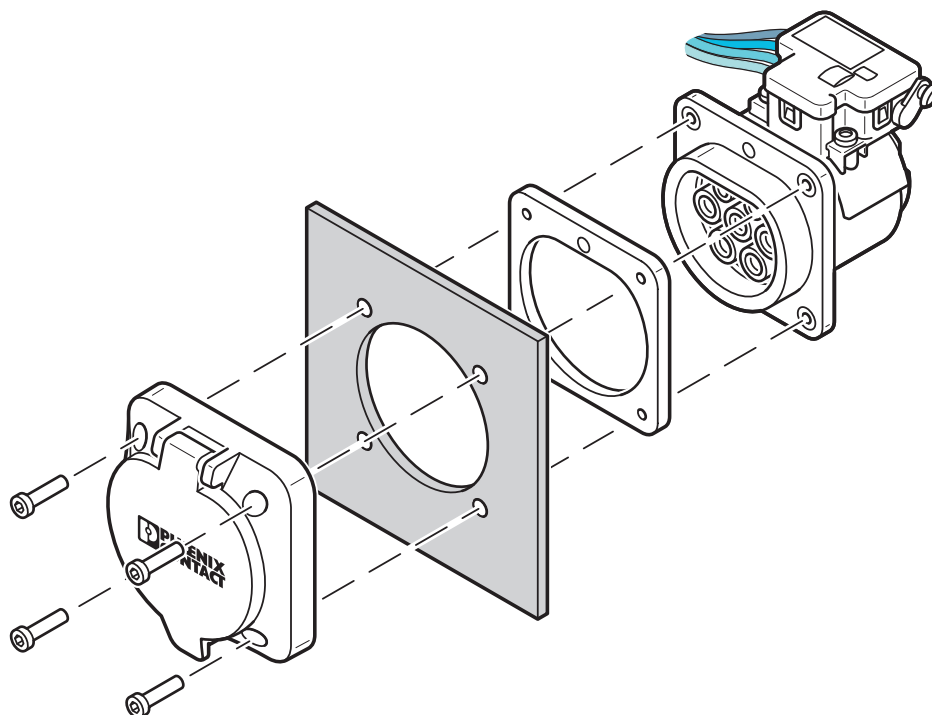


Dimensional drawing



Dimensional drawing

Schematic diagram



EV-T2SC_EMF - Protective cover

1093939

<https://www.phoenixcontact.com/in/products/1093939>



Classifications

ECLASS

ECLASS-11.0	27144792
ECLASS-13.0	27144792
ECLASS-12.0	27144792

ETIM

ETIM 9.0	EC002884
----------	----------

UNSPSC

UNSPSC 21.0	39121500
-------------	----------

EV-T2SC_EMF - Protective cover



1093939
<https://www.phoenixcontact.com/in/products/1093939>

Environmental product compliance

EU RoHS	
Fulfills EU RoHS substance requirements	Not applicable, No electrical and electronic equipment (EEE), cannot be used in EEE
EU REACH SVHC	
REACH candidate substance (CAS No.)	No substance above 0.1 wt%

Phoenix Contact 2025 © - all rights reserved
<https://www.phoenixcontact.com>

PHOENIX CONTACT (I) Pvt. Ltd.
A-58/2, Okhla Industrial Area, Phase - II, New Delhi-110 020

+91.1275.71420
info@phoenixcontact.co.in