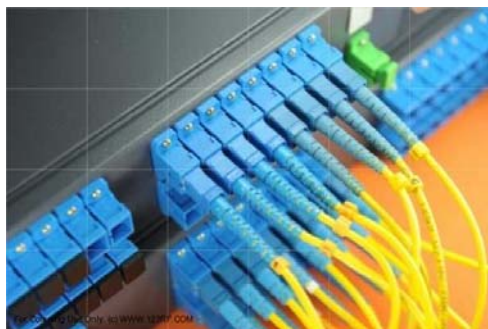


# Datasheet

## Insertion Extraction Tool

- The IET tool is specially designed to easily insert and extract optical connectors in high density patch panels, specially the small form factor connectors.
- Works with most common optical connectors, including LC connectors
- Tool tip is designed to insure a positive grip and avoiding slipping
- Spring loaded tool action and ergonomic grips allow easy, comfortable and precision left or right hand operation.



### How it works



Type	Part nr	Size	Weight
IET	7541151	223 x 70 x 19 mm	99 g