

Features

- In accordance with ISO15552/6431 standard
- Version with adjustable cushioning
- Aluminium profile with slots for magnetic sensors
- Working temperature $-10\text{ }^{\circ}\text{C} \div +80\text{ }^{\circ}\text{C}$
- Working Pressure Range 1-10 bar

RS PRO Pneumatic Piston Rod Cylinder

RS PRO 0360738



RS PRO is the own brand of RS. The RS PRO Seal of Approval is your assurance of professional quality, a guarantee that every part is rigorously tested, inspected, and audited against demanding standards. Making RS PRO the Smart Choice for our customers.

Product Description

- These pneumatic cylinders comply with international standards, delivering exceptional reliability and versatility.
- PS cylinders are distinguished by their robustness and durability.
- Designed to meet the stringent ISO 6431 standard, they guarantee consistency and seamless system integration.
- Their profile tube design and operational efficiency make them an excellent choice for even the most complex industrial applications.

General Specifications

Manufacturer Series	RS PRO PS
Action	Double Acting

Mechanical Specifications

Stroke	See table below for more details
Bore	See table below for more details
Length	See table below for more details
Piston Rod Thread Gender	Male
Maximum Operating Pressure	10 bar
Working Pressure Range	1-10 bar
Working Temperature	-10 °C ÷ +80 °C
Absolute Maximum Pressure	12 bar
Cushioning Type	Adjustable pneumatic
Pneumatic Connection	See table below for more details
Diameter	See table below for more details
Port Connection	See table below for more details
Width	See table below for more details
Height	See table below for more details
Dimensions	See table below for more details

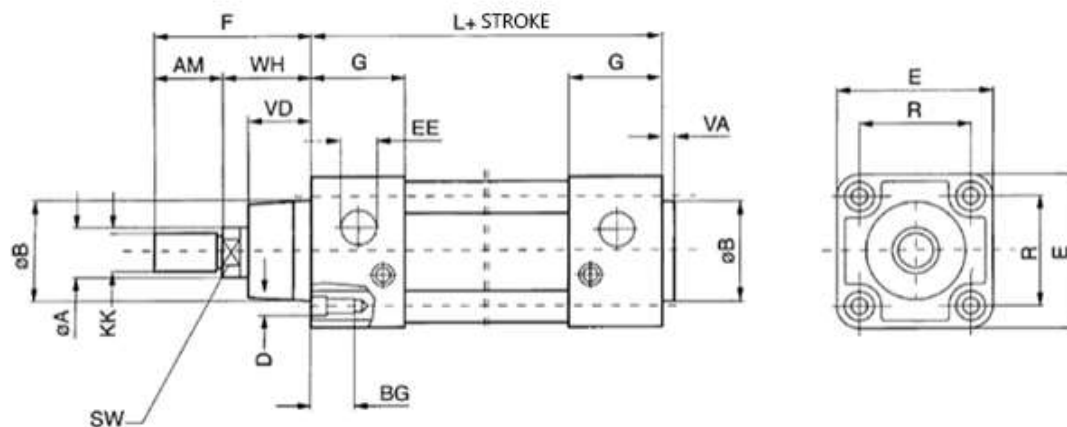
Approvals

Declarations	MFR Declaration of Conformity
Standards Met	ISO15552/6431

Products within this series

Stock No.	Bore (mm)	Stroke (mm)	Length (mm)	Height (mm)	Width (mm)	Diameter (mm)	Pneumatic Connect. (Port Connection)
0360738	32	80	222	47	47	32	1/8"
0360739	32	125	267	47	47	32	1/8"
0360740	32	160	302	47	47	32	1/8"
0360741	32	320	462	47	47	32	1/8"
0360742	32	400	542	47	47	32	1/8"
0360744	32	500	642	47	47	32	1/8"
0360745	40	80	239	53	53	40	1/4"
0360746	40	400	559	53	53	40	1/4"
0360748	50	160	335	65	65	50	1/4"
0360749	50	320	495	65	65	50	1/4"
0360750	50	400	575	65	65	50	1/4"
0360751	63	200	390	75	75	63	3/8"
0360752	63	250	440	75	75	63	3/8"
0360754	63	500	690	75	75	63	3/8"
0360755	80	125	339	95	95	80	3/8"
0360757	80	160	374	95	95	80	3/8"
0360758	80	250	464	95	95	80	3/8"

Drawings / Dimensions / Internal Structure / Materials



Stock No.	Bore	A	B	D	E	F	G	L	R	AM	BG	EE	KK	SW	VA	VD	WH
0360738 0360739 0360740 0360741 0360742 0360744	32	12	30	M6	47	48	28	94	32.5	22	16	G1/8	M10x1.25	10	4	20	26
0360745 0360746	40	16	35	M6	53	54	31.5	105	38	24	16	G1/4	M12x1.25	13	4	22	30
0360748 0360749 0360750	50	20	40	M8	65	69	31.5	106	46.5	32	16	G1/4	M16x1.5	16	4	28	37
0360751 0360752 0360754	63	20	45	M8	75	69	35	121	56.5	32	16	G3/8	M16x1.5	16	4	28	37
0360755 0360757 0360758	80	25	45	M10	95	86	36	128	72	40	16	G3/8	M20x1.5	21	4	34	46