

XT 2,5/1P-PE - Protective conductor terminal block



1544638

<https://www.phoenixcontact.com/pc/products/1544638>

Please be informed that the data shown in this PDF document is generated from our online catalog. Please find the complete data in the user documentation. Our general terms of use for downloads are valid.



Protective conductor terminal block, number of connections: 2, number of positions: 1, connection method: Push-X-connection, Rated cross section: 2.5 mm², cross section: 0.34 mm² - 4 mm², mounting type: NS 35/7,5, NS 35/15, color: green-yellow

Your advantages

- The CLIPLINE complete COMBI terminal block ensures greater efficiency in control cabinet building through cable assemblies
- In addition to the classic features of the CLIPLINE complete system, the XT-COMBI terminal blocks are characterized by the modern XT connection technology and the option of plug-in capability
- The XT connection technology enables conductors to be connected directly and without tools, even without the addition of ferrules
- The COMBI plug-in zone is universal; all existing COMBI connectors can be used to establish a connection with it

Commercial data

Item number	1544638
Packing unit	50 pc
Minimum order quantity	50 pc
Product key	BE2542
GTIN	4067923018020
Weight per piece (including packing)	7.83 g
Weight per piece (excluding packing)	7.83 g
Customs tariff number	85369010
Country of origin	CN

XT 2,5/1P-PE - Protective conductor terminal block



1544638

<https://www.phoenixcontact.com/pc/products/1544638>

Technical data

Product properties

Product family	XT
Area of application	Railway industry
	Machine building
	Plant engineering
Number of positions	1
Number of connections	2
Number of rows	1

Insulation characteristics

Overvoltage category	III
Degree of pollution	3

Electrical properties

Rated surge voltage	8 kV
Maximum power dissipation for nominal condition	0.77 W

Connection data

Number of connections per level	2
Nominal cross section	2.5 mm ²
Connection method	Push-X-connection
Stripping length	10 mm ... 12 mm
Internal cylindrical gage	A3
	B3
Connection in acc. with standard	IEC 61984
Conductor cross-section rigid	0.34 mm ² ... 4 mm ²
Cross section AWG	20 ... 12 (converted acc. to IEC)
Conductor cross-section flexible	0.5 mm ² ... 4 mm ²
Conductor cross-section, flexible [AWG]	20 ... 12 (converted acc. to IEC)
Conductor cross-section flexible (ferrule without plastic sleeve)	0.34 mm ² ... 2.5 mm ²
Flexible conductor cross-section (ferrule with plastic sleeve)	0.34 mm ² ... 2.5 mm ²
Nominal cross section	2.5 mm ²

Dimensions

Width	5.2 mm
Height	48.6 mm
Depth	35.3 mm
Depth on NS 35/7,5	36.8 mm
Depth on NS 35/15	44.3 mm

Material specifications

Color	green-yellow
-------	--------------

XT 2,5/1P-PE - Protective conductor terminal block



1544638

<https://www.phoenixcontact.com/pc/products/1544638>

Flammability rating according to UL 94	V0
Insulating material group	I
Insulating material	PA
Static insulating material application in cold	-60 °C
Relative insulation material temperature index (Elec., UL 746 B)	130 °C
Fire protection for rail vehicles (DIN EN 45545-2) R22	HL 1 - HL 3
Fire protection for rail vehicles (DIN EN 45545-2) R23	HL 1 - HL 3
Fire protection for rail vehicles (DIN EN 45545-2) R24	HL 1 - HL 3
Fire protection for rail vehicles (DIN EN 45545-2) R26	HL 1 - HL 3
Surface flammability NFPA 130 (ASTM E 162)	passed
Specific optical density of smoke NFPA 130 (ASTM E 662)	passed
Smoke gas toxicity NFPA 130 (SMP 800C)	passed

Mechanical properties

Mechanical data

Open side panel	Yes
-----------------	-----

Environmental and real-life conditions

Oscillation/broadband noise

Specification	EN 50155:2021-07
Spectrum	Long life test category 1, class B, body mounted
Frequency	$f_1 = 5 \text{ Hz}$ to $f_2 = 150 \text{ Hz}$
ASD level	$0.964 \text{ (m/s}^2\text{)}^2\text{/Hz}$
Acceleration	5.72 m/s^2
Test duration per axis	5 h
Test directions	X-, Y- and Z-axis
Result	Test passed

Shocks

Specification	DIN EN 50155 (VDE 0115-200):2022-06
Pulse shape	Half-sine
Acceleration	5g
Shock duration	30 ms
Number of shocks per direction	3
Test directions	X-, Y- and Z-axis (pos. and neg.)
Result	Test passed

Ambient conditions

Ambient temperature (operation)	-60 °C ... 100 °C
Ambient temperature (storage/transport)	-25 °C ... 60 °C (for a short time, not exceeding 24 h, -60 °C to +70 °C)
Ambient temperature (assembly)	-5 °C ... 70 °C
Ambient temperature (actuation)	-5 °C ... 70 °C
Permissible humidity (operation)	20 % ... 90 %

XT 2,5/1P-PE - Protective conductor terminal block



1544638

<https://www.phoenixcontact.com/pc/products/1544638>

Permissible humidity (storage/transport)	30 % ... 70 %
--	---------------

Standards and regulations

Connection in acc. with standard	IEC 61984
----------------------------------	-----------

Mounting

Mounting type	NS 35/7,5
	NS 35/15

XT 2,5/1P-PE - Protective conductor terminal block

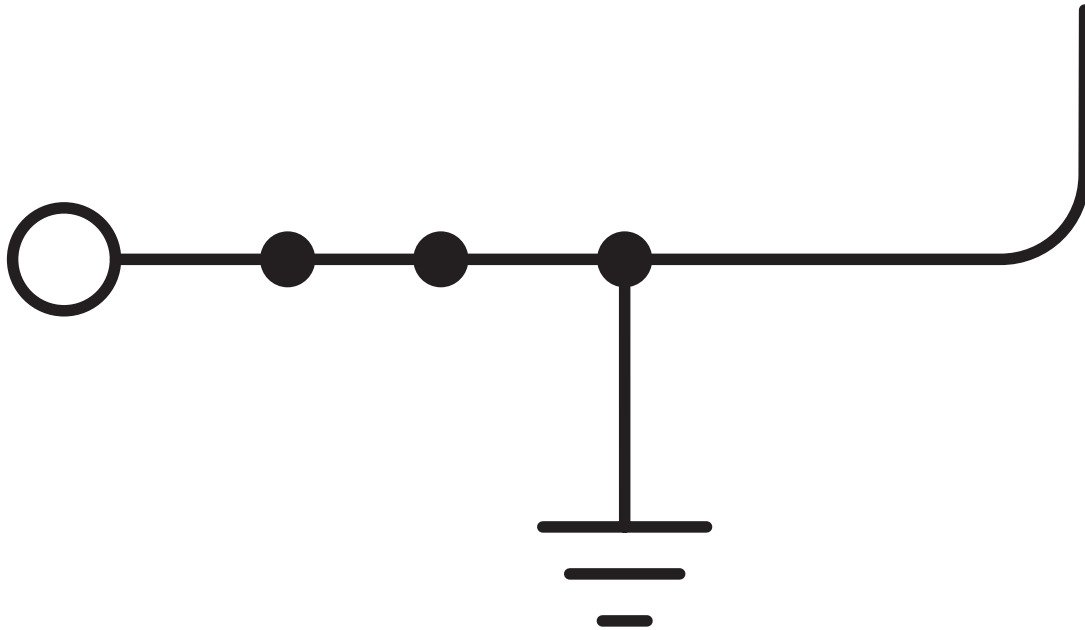


1544638

<https://www.phoenixcontact.com/pc/products/1544638>

Drawings

Circuit diagram



XT 2,5/1P-PE - Protective conductor terminal block





1544638

<https://www.phoenixcontact.com/pc/products/1544638>

Approvals

To download certificates, visit the product detail page: <https://www.phoenixcontact.com/pc/products/1544638>

 CSA Approval ID: 2030668				
	Nominal voltage U_N	Nominal current I_N	Cross section AWG	Cross section mm^2
B	-	-	20 - 12	-
C	-	-	20 - 12	-
D	-	-	20 - 12	-

 cULus Recognized Approval ID: E60425				
	Nominal voltage U_N	Nominal current I_N	Cross section AWG	Cross section mm^2
B	-	-	20 - 12	-
C	-	-	20 - 12	-
F	-	-	20 - 12	-
D	-	-	20 - 12	-

DNV Approval ID: TAE000051K				
---------------------------------------	--	--	--	--

XT 2,5/1P-PE - Protective conductor terminal block



1544638

<https://www.phoenixcontact.com/pc/products/1544638>

Classifications

ECLASS

ECLASS-13.0	27250103
ECLASS-15.0	27250103

ETIM

ETIM 10.0	EC000901
-----------	----------

UNSPSC

UNSPSC 21.0	39121400
-------------	----------

XT 2,5/1P-PE - Protective conductor terminal block



1544638

<https://www.phoenixcontact.com/pc/products/1544638>

Environmental product compliance

EU RoHS

Fulfills EU RoHS substance requirements	Yes, No exemptions
---	--------------------

China RoHS

Environment friendly use period (EFUP)	EFUP-E
	No hazardous substances above the limits

EU REACH SVHC

REACH candidate substance (CAS No.)	No substance above 0.1 wt%
-------------------------------------	----------------------------

XT 2,5/1P-PE - Protective conductor terminal block



1544638

<https://www.phoenixcontact.com/pc/products/1544638>

Accessories

FBS 2-5 - Plug-in bridge

3030161

<https://www.phoenixcontact.com/pc/products/3030161>



Plug-in bridge, pitch: 5.2 mm, number of positions: 2, nominal current: 24 A, length: 23 mm, color: red

FBS 3-5 - Plug-in bridge

3030174

<https://www.phoenixcontact.com/pc/products/3030174>



Plug-in bridge, pitch: 5.2 mm, number of positions: 3, nominal current: 24 A, length: 23 mm, color: red

XT 2,5/1P-PE - Protective conductor terminal block



1544638

<https://www.phoenixcontact.com/pc/products/1544638>

FBS 4-5 - Plug-in bridge

3030187

<https://www.phoenixcontact.com/pc/products/3030187>



Plug-in bridge, pitch: 5.2 mm, number of positions: 4, nominal current: 24 A, length: 23 mm, color: red

FBS 5-5 - Plug-in bridge

3030190

<https://www.phoenixcontact.com/pc/products/3030190>



Plug-in bridge, pitch: 5.2 mm, number of positions: 5, nominal current: 24 A, length: 23 mm, color: red

XT 2,5/1P-PE - Protective conductor terminal block



1544638

<https://www.phoenixcontact.com/pc/products/1544638>

FBS 10-5 - Plug-in bridge

3030213

<https://www.phoenixcontact.com/pc/products/3030213>



Plug-in bridge, pitch: 5.2 mm, number of positions: 10, nominal current: 24 A, length: 23 mm, color: red

FBS 20-5 - Plug-in bridge

3030226

<https://www.phoenixcontact.com/pc/products/3030226>



Plug-in bridge, pitch: 5.2 mm, number of positions: 20, nominal current: 24 A, color: red

XT 2,5/1P-PE - Protective conductor terminal block



1544638

<https://www.phoenixcontact.com/pc/products/1544638>

FBS 50-5 - Plug-in bridge

3038930

<https://www.phoenixcontact.com/pc/products/3038930>



Plug-in bridge, pitch: 5.2 mm, number of positions: 50, nominal current: 24 A, color: red

FBSR 2-5 - Plug-in bridge

3033702

<https://www.phoenixcontact.com/pc/products/3033702>



Plug-in bridge, pitch: 5.2 mm, number of positions: 2, nominal current: 17.5 A, color: red

XT 2,5/1P-PE - Protective conductor terminal block



1544638

<https://www.phoenixcontact.com/pc/products/1544638>

FBSR 3-5 - Plug-in bridge

3001591

<https://www.phoenixcontact.com/pc/products/3001591>



Plug-in bridge, pitch: 5.2 mm, number of positions: 3, nominal current: 17.5 A, color: red

FBSR 4-5 - Plug-in bridge

3001592

<https://www.phoenixcontact.com/pc/products/3001592>



Plug-in bridge, pitch: 5.2 mm, number of positions: 4, nominal current: 17.5 A, color: red

XT 2,5/1P-PE - Protective conductor terminal block



1544638

<https://www.phoenixcontact.com/pc/products/1544638>

FBSR 5-5 - Plug-in bridge

3001593

<https://www.phoenixcontact.com/pc/products/3001593>



Plug-in bridge, pitch: 5.2 mm, number of positions: 5, nominal current: 17.5 A, color: red

FBSR 10-5 - Plug-in bridge

3033710

<https://www.phoenixcontact.com/pc/products/3033710>



Plug-in bridge, pitch: 5.2 mm, number of positions: 10, nominal current: 17.5 A, color: red

XT 2,5/1P-PE - Protective conductor terminal block



1544638

<https://www.phoenixcontact.com/pc/products/1544638>

FBS 2-5 BU - Plug-in bridge

3036877

<https://www.phoenixcontact.com/pc/products/3036877>



Plug-in bridge, pitch: 5.2 mm, number of positions: 2, nominal current: 24 A, color: blue

FBS 3-5 BU - Plug-in bridge

3036880

<https://www.phoenixcontact.com/pc/products/3036880>



Plug-in bridge, pitch: 5.2 mm, number of positions: 3, nominal current: 24 A, color: blue

XT 2,5/1P-PE - Protective conductor terminal block



1544638

<https://www.phoenixcontact.com/pc/products/1544638>

FBS 4-5 BU - Plug-in bridge

3036893

<https://www.phoenixcontact.com/pc/products/3036893>



Plug-in bridge, pitch: 5.2 mm, number of positions: 4, nominal current: 24 A, color: blue

FBS 5-5 BU - Plug-in bridge

3036903

<https://www.phoenixcontact.com/pc/products/3036903>



Plug-in bridge, pitch: 5.2 mm, number of positions: 5, nominal current: 24 A, color: blue

XT 2,5/1P-PE - Protective conductor terminal block



1544638

<https://www.phoenixcontact.com/pc/products/1544638>

FBS 10-5 BU - Plug-in bridge

3036916

<https://www.phoenixcontact.com/pc/products/3036916>



Plug-in bridge, pitch: 5.2 mm, number of positions: 10, nominal current: 24 A, color: blue

FBS 20-5 BU - Plug-in bridge

3036929

<https://www.phoenixcontact.com/pc/products/3036929>



Plug-in bridge, pitch: 5.2 mm, number of positions: 20, nominal current: 24 A, color: blue

XT 2,5/1P-PE - Protective conductor terminal block



1544638

<https://www.phoenixcontact.com/pc/products/1544638>

FBS 50-5 BU - Plug-in bridge

3032114

<https://www.phoenixcontact.com/pc/products/3032114>



Plug-in bridge, pitch: 5.2 mm, number of positions: 50, nominal current: 24 A, color: blue

ATP-ST 4 - Partition plate

3030721

<https://www.phoenixcontact.com/pc/products/3030721>



Partition plate, depth: 39 mm, width: 2 mm, height: 59.8 mm, color: gray

XT 2,5/1P-PE - Protective conductor terminal block



1544638

<https://www.phoenixcontact.com/pc/products/1544638>

D-XT 1,5/2,5 - End cover

1343141

<https://www.phoenixcontact.com/pc/products/1343141>

End cover, depth: 29.1 mm, width: 2.2 mm, height: 48.6 mm, color: gray



STP 5-2-ZB - Marker carriers

3037643

<https://www.phoenixcontact.com/pc/products/3037643>



Marker carriers, snaps into ST 2,5 spring-cage terminal blocks, can be marked with UC-TM 5, UC-TMF 5, UCT-TM 5, UCT-TMF 5, ZB 5, or ZBF 5, gray, unmarked, mounting type: latching, text field height: 10.5 mm, text field width: 5 mm

XT 2,5/1P-PE - Protective conductor terminal block



1544638

<https://www.phoenixcontact.com/pc/products/1544638>

GBS 5-25X12 - Group marker label for terminal marking

0810588

<https://www.phoenixcontact.com/pc/products/0810588>



Group marker label, snaps onto terminal center for screw, spring-cage and quick connection terminal blocks, labeled with a 25 x 12 mm label or manually with the B-STIFT, in the foot part with ZB 5

GBS-ZB/26X6 - Group marker label for terminal marking

0809298

<https://www.phoenixcontact.com/pc/products/0809298>



Group marking label, snaps onto terminal center for screw, spring-cage and quick connection terminal blocks, labeled with ESL 26x6 mm or EST 25x6 mm, in the foot part with Zack marker strip, length: 29 mm

XT 2,5/1P-PE - Protective conductor terminal block

1544638

<https://www.phoenixcontact.com/pc/products/1544638>

CEC 2,5 - Filler plug

3062757

<https://www.phoenixcontact.com/pc/products/3062757>



Cover for conductor shaft, 10-pos., for spring cage terminal blocks (ST) and terminal blocks with push-in technology (PT) with a width of 5.2 mm

WS PT 2,5 - Warning label

1029026

<https://www.phoenixcontact.com/pc/products/1029026>



Warning label, yellow/black, labeled: Lightning flash, mounting type: plug in, for terminal block width: 5.2 mm

XT 2,5/1P-PE - Protective conductor terminal block

1544638

<https://www.phoenixcontact.com/pc/products/1544638>

WS-DIO PT 2,5 - Warning label

1029037

<https://www.phoenixcontact.com/pc/products/1029037>



Warning label, yellow/black, labeled: Diode, mounting type: plug in, for terminal block width: 5.2 mm

PC - Coding star

3040588

<https://www.phoenixcontact.com/pc/products/3040588>



Coding star, 4-section, depth: 6 mm, width: 3 mm, height: 3 mm, color: red

XT 2,5/1P-PE - Protective conductor terminal block

1544638

<https://www.phoenixcontact.com/pc/products/1544638>

LPO 2,5/E - Pick-off plug

3270516

<https://www.phoenixcontact.com/pc/products/3270516>



Pick-off plug, nom. voltage: 800 V, nominal current: 24 A, number of positions: 1, connection method: Push-in connection, Rated cross section: 2.5 mm², cross section: 0.14 mm²- 4 mm², color: gray

LPO 2,5 - Pick-off plug

3270517

<https://www.phoenixcontact.com/pc/products/3270517>



Pick-off plug, nom. voltage: 800 V, nominal current: 24 A, number of positions: 1, connection method: Push-in connection, Rated cross section: 2.5 mm², cross section: 0.14 mm²- 4 mm², color: gray

XT 2,5/1P-PE - Protective conductor terminal block



1544638

<https://www.phoenixcontact.com/pc/products/1544638>

LPS-5/E - Service connector

3270520

<https://www.phoenixcontact.com/pc/products/3270520>



Service connector, nom. voltage: 800 V, nominal current: 24 A, number of positions: 1, connection method: Push-in connection, Rated cross section: 2.5 mm², cross section: 0.14 mm²- 4 mm², color: red

LPS-5 - Service connector

3270521

<https://www.phoenixcontact.com/pc/products/3270521>



Service connector, nom. voltage: 800 V, nominal current: 24 A, number of positions: 1, connection method: Push-in connection, Rated cross section: 2.5 mm², cross section: 0.14 mm²- 4 mm², color: red

XT 2,5/1P-PE - Protective conductor terminal block

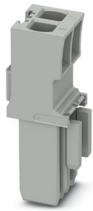
1544638

<https://www.phoenixcontact.com/pc/products/1544638>

CP 2,5/2 - Connector housing

3061102

<https://www.phoenixcontact.com/pc/products/3061102>



Connector housing, nom. voltage: 500 V, nominal current: 10 A, connection method: Crimp connection, width: 10.3 mm, height: 30.5 mm, number of positions: 2, color: gray, mounting type: Plug-in mounting

CP 2,5/3 - Connector housing

3061103

<https://www.phoenixcontact.com/pc/products/3061103>



Connector housing, nom. voltage: 500 V, nominal current: 10 A, connection method: Crimp connection, width: 15.5 mm, height: 30.5 mm, number of positions: 3, color: gray

XT 2,5/1P-PE - Protective conductor terminal block

1544638

<https://www.phoenixcontact.com/pc/products/1544638>

CP 2,5/4 - Connector housing

3061104

<https://www.phoenixcontact.com/pc/products/3061104>



Connector housing, nom. voltage: 500 V, nominal current: 10 A, connection method: Crimp connection, width: 20.6 mm, height: 30.5 mm, number of positions: 4, color: gray

CP 2,5/5 - Connector housing

3061105

<https://www.phoenixcontact.com/pc/products/3061105>



Connector housing, nom. voltage: 500 V, nominal current: 10 A, connection method: Crimp connection, width: 25.8 mm, height: 30.5 mm, number of positions: 5, color: gray

XT 2,5/1P-PE - Protective conductor terminal block

1544638

<https://www.phoenixcontact.com/pc/products/1544638>

CP 2,5/6 - Connector housing

3061106

<https://www.phoenixcontact.com/pc/products/3061106>



Connector housing, nom. voltage: 500 V, nominal current: 10 A, connection method: Crimp connection, width: 30.9 mm, height: 30.5 mm, number of positions: 6, color: gray

CP 2,5/8 - Connector housing

3061108

<https://www.phoenixcontact.com/pc/products/3061108>



Connector housing, nom. voltage: 500 V, nominal current: 10 A, connection method: Crimp connection, width: 41.2 mm, height: 30.5 mm, number of positions: 8, color: gray

XT 2,5/1P-PE - Protective conductor terminal block



1544638

<https://www.phoenixcontact.com/pc/products/1544638>

CP 2,5/10 - Connector housing

3061110

<https://www.phoenixcontact.com/pc/products/3061110>



Connector housing, nom. voltage: 500 V, nominal current: 10 A, connection method: Crimp connection, width: 51.5 mm, height: 30.5 mm, number of positions: 10, color: gray

NS 35/ 7,5 PERF 2000MM - DIN rail perforated

0801733

<https://www.phoenixcontact.com/pc/products/0801733>



DIN rail perforated, Pack of 25 (50 m), acc. to EN 60715, material: Steel, galvanized, passivated with a thick layer, Standard profile, color: silver

XT 2,5/1P-PE - Protective conductor terminal block

1544638

<https://www.phoenixcontact.com/pc/products/1544638>



NS 35/ 7,5 UNPERF 2000MM - DIN rail, unperforated

0801681

<https://www.phoenixcontact.com/pc/products/0801681>



DIN rail, unperforated, Pack of 25 (50 m), acc. to EN 60715, material: Steel, galvanized, passivated with a thick layer, Standard profile, color: silver-colored

NS 35/ 7,5 WH PERF 2000MM - DIN rail perforated

1204119

<https://www.phoenixcontact.com/pc/products/1204119>



DIN rail perforated, Pack of 25 (50 m), acc. to EN 60715, material: Steel, galvanized, white passivated, Standard profile, color: silver-colored

XT 2,5/1P-PE - Protective conductor terminal block

1544638

<https://www.phoenixcontact.com/pc/products/1544638>



NS 35/ 7,5 WH UNPERF 2000MM-VPE 10 - DIN rail, unperforated

1204122

<https://www.phoenixcontact.com/pc/products/1204122>



DIN rail, unperforated, Pack of 10 (20 m), acc. to EN 60715, material: Steel, galvanized, white passivated, Standard profile, color: silver-colored

NS 35/ 7,5 AL UNPERF 2000MM - DIN rail, unperforated

0801704

<https://www.phoenixcontact.com/pc/products/0801704>



DIN rail, unperforated, Pack of 25 (50 m), acc. to EN 60715, material: Aluminum, uncoated, Standard profile, color: silver-colored

XT 2,5/1P-PE - Protective conductor terminal block

1544638

<https://www.phoenixcontact.com/pc/products/1544638>



NS 35/ 7,5 ZN PERF 2000MM - DIN rail perforated

1206421

<https://www.phoenixcontact.com/pc/products/1206421>



DIN rail perforated, Pack of 25 (50 m), acc. to EN 60715, material: Steel, zinc plating, Standard profile, color: silver-colored

NS 35/ 7,5 ZN UNPERF 2000MM - DIN rail, unperforated

1206434

<https://www.phoenixcontact.com/pc/products/1206434>



DIN rail, unperforated, Pack of 25 (50 m), acc. to EN 60715, material: Steel, zinc plating, Standard profile, color: silver-colored

XT 2,5/1P-PE - Protective conductor terminal block

1544638

<https://www.phoenixcontact.com/pc/products/1544638>



NS 35/ 7,5 CU UNPERF 2000MM-VPE 10 - DIN rail, unperforated

0801762

<https://www.phoenixcontact.com/pc/products/0801762>



DIN rail, unperforated, Pack of 10 (20 m), acc. to EN 60715, material: Copper, uncoated, Standard profile, color: copper-colored

NS 35/ 7,5 CAP - End cap

1206560

<https://www.phoenixcontact.com/pc/products/1206560>

DIN rail end piece, for DIN rail NS 35/7.5



XT 2,5/1P-PE - Protective conductor terminal block

1544638

<https://www.phoenixcontact.com/pc/products/1544638>

NS 35/15 PERF 2000MM - DIN rail perforated

1201730

<https://www.phoenixcontact.com/pc/products/1201730>



DIN rail perforated, Pack of 25 (50 m), similar to EN 60715, material: Steel, galvanized, passivated with a thick layer, Standard profile, color: silver-colored

NS 35/15 UNPERF 2000MM - DIN rail, unperforated

1201714

<https://www.phoenixcontact.com/pc/products/1201714>



DIN rail, unperforated, Pack of 25 (50 m), similar to EN 60715, material: Steel, galvanized, passivated with a thick layer, Standard profile, color: silver-colored

XT 2,5/1P-PE - Protective conductor terminal block

1544638

<https://www.phoenixcontact.com/pc/products/1544638>



NS 35/15 WH PERF 2000MM - DIN rail perforated

0806602

<https://www.phoenixcontact.com/pc/products/0806602>



DIN rail perforated, Pack of 25 (50 m), similar to EN 60715, material: Steel, galvanized, white passivated, Standard profile, color: white

NS 35/15 WH UNPERF 2000MM-VPE 10 - DIN rail, unperforated

1204135

<https://www.phoenixcontact.com/pc/products/1204135>



DIN rail, unperforated, Pack of 10 (20 m), similar to EN 60715, material: Steel, galvanized, white passivated, Standard profile, color: silver-colored

XT 2,5/1P-PE - Protective conductor terminal block

1544638

<https://www.phoenixcontact.com/pc/products/1544638>

NS 35/15 AL UNPERF 2000MM - DIN rail, unperforated

1201756

<https://www.phoenixcontact.com/pc/products/1201756>



DIN rail, unperforated, similar to EN 60715, material: Aluminum, uncoated, Standard profile, color: silver-colored

NS 35/15 ZN PERF 2000MM - DIN rail perforated

1206599

<https://www.phoenixcontact.com/pc/products/1206599>



DIN rail perforated, Pack of 25 (50 m), similar to EN 60715, material: Steel, zinc plating, Standard profile, color: silver-colored

XT 2,5/1P-PE - Protective conductor terminal block

1544638

<https://www.phoenixcontact.com/pc/products/1544638>



NS 35/15 ZN UNPERF 2000MM - DIN rail, unperforated

1206586

<https://www.phoenixcontact.com/pc/products/1206586>



DIN rail, unperforated, Pack of 25 (50 m), similar to EN 60715, material: Steel, zinc plating, Standard profile, color: silver-colored

NS 35/15 CU UNPERF 2000MM-VPE 10 - DIN rail, unperforated

1201895

<https://www.phoenixcontact.com/pc/products/1201895>



DIN rail, unperforated, Pack of 10 (20 m), similar to EN 60715, material: Copper, uncoated, Standard profile, color: copper-colored

XT 2,5/1P-PE - Protective conductor terminal block

1544638

<https://www.phoenixcontact.com/pc/products/1544638>



NS 35/15 CAP - End cap

1206573

<https://www.phoenixcontact.com/pc/products/1206573>

DIN rail end piece, for DIN rail NS 35/15



NS 35/15-2,3 UNPERF 2000MM-VPE 10 - DIN rail, unperforated

1201798

<https://www.phoenixcontact.com/pc/products/1201798>



DIN rail, unperforated, Pack of 10 (20 m), acc. to EN 60715, material: Steel, galvanized, passivated with a thick layer, Standard profile 2.3 mm, color: silver-colored

XT 2,5/1P-PE - Protective conductor terminal block

1544638

<https://www.phoenixcontact.com/pc/products/1544638>

ZB 5 :UNBEDRUCKT - Zack marker strip

1050004

<https://www.phoenixcontact.com/pc/products/1050004>



Zack marker strip, Strip, white, unmarked, can be labeled with: PLOTMARK, CMS-P1-PLOTTER, mounting type: latching, for terminal block width: 5.2 mm, Number of individual labels: 10, text field height: 10.5 mm, text field width: 5.1 mm

ZB 5 CUS - Zack marker strip

0824962

<https://www.phoenixcontact.com/pc/products/0824962>



Zack marker strip, can be ordered: Strip, white, labeled according to customer specifications, mounting type: snap into tall marker groove, for terminal block width: 5.2 mm, Number of individual labels: 10, text field height: 10.5 mm, text field width: 5.15 mm

XT 2,5/1P-PE - Protective conductor terminal block

1544638

<https://www.phoenixcontact.com/pc/products/1544638>

ZB 5,LGS:FORTL.ZAHLEN - Zack marker strip

1050017

<https://www.phoenixcontact.com/pc/products/1050017>



Zack marker strip, Strip, white, labeled, printed horizontally: consecutive numbers 1 ... 10, 11 ... 20, etc. up to 491 ... 500, mounting type: latching, for terminal block width: 5.2 mm, Number of individual labels: 10, text field height: 10.5 mm, text field width: 5.15 mm

ZB 5,QR:FORTL.ZAHLEN - Zack marker strip

1050020

<https://www.phoenixcontact.com/pc/products/1050020>



Zack marker strip, Strip, white, Printed vertically: consecutive numbers 1 ... 10, 11 ... 20, etc. up to 491 ... 500, mounting type: latching, for terminal block width: 5.2 mm, Number of individual labels: 10, text field height: 10.5 mm, text field width: 5.15 mm

XT 2,5/1P-PE - Protective conductor terminal block

1544638

<https://www.phoenixcontact.com/pc/products/1544638>



ZB 5,LGS:GLEICHE ZAHLEN - Zack marker strip

1050033

<https://www.phoenixcontact.com/pc/products/1050033>



Zack marker strip, Strip, white, labeled, can be labeled with: CMS-P1-PLOTTER, printed horizontally: Identical numbers 1 or 2, etc. up to 100, mounting type: latching, for terminal block width: 5.2 mm, Number of individual labels: 10, text field height: 10.5 mm, text field width: 5.15 mm

ZB 5,LGS:L1-N,PE - Zack marker strip

1050415

<https://www.phoenixcontact.com/pc/products/1050415>



Zack marker strip, Strip, white, labeled, horizontal: L1, L2, L3, N, PE, L1, L2, L3, N, PE, mounting type: latching, for terminal block width: 5.2 mm, Number of individual labels: 10, text field height: 10.5 mm, text field width: 5.15 mm

XT 2,5/1P-PE - Protective conductor terminal block



1544638

<https://www.phoenixcontact.com/pc/products/1544638>

UC-TM 5 - Marker for terminal blocks

0818108

<https://www.phoenixcontact.com/pc/products/0818108>



Marker for terminal blocks, Sheet, white, unmarked, can be labeled with: BLUEMARK E.CARD, BLUEMARK ID COLOR, BLUEMARK ID, BLUEMARK CLED, PLOTMARK, CMS-P1-PLOTTER, mounting type: latching, for terminal block width: 5.2 mm, Number of individual labels: 96, text field height: 10.5 mm, text field width: 4.6 mm

UC-TM 5 CUS - Marker for terminal blocks

0824581

<https://www.phoenixcontact.com/pc/products/0824581>



Marker for terminal blocks, can be ordered: by sheet, white, labeled according to customer specifications, mounting type: snap into tall marker groove, for terminal block width: 5.2 mm, Number of individual labels: 96, text field height: 4.6 mm, text field width: 10.5 mm

XT 2,5/1P-PE - Protective conductor terminal block

1544638

<https://www.phoenixcontact.com/pc/products/1544638>

UCT-TM 5 - Marker for terminal blocks

0828734

<https://www.phoenixcontact.com/pc/products/0828734>



Marker for terminal blocks, Sheet, white, unmarked, can be labeled with: BLUEMARK E.CARD, BLUEMARK ID COLOR, BLUEMARK ID, BLUEMARK CLED, THERMOMARK PRIME 2.0, THERMOMARK PRIME, THERMOMARK CARD 2.0, THERMOMARK CARD, TOPMARK NEO, TOPMARK LASER, mounting type: latching, for terminal block width: 5.2 mm, Number of individual labels: 72, text field height: 10.5 mm, text field width: 4.6 mm

UCT-TM 5 CUS - Marker for terminal blocks

0829595

<https://www.phoenixcontact.com/pc/products/0829595>



Marker for terminal blocks, can be ordered: by sheet, white, labeled according to customer specifications, mounting type: snap into tall marker groove, for terminal block width: 5.2 mm, Number of individual labels: 72, text field height: 10.5 mm, text field width: 4.6 mm

XT 2,5/1P-PE - Protective conductor terminal block

1544638

<https://www.phoenixcontact.com/pc/products/1544638>



ZBF 5:UNBEDRUCKT - Zack Marker strip, flat

0808642

<https://www.phoenixcontact.com/pc/products/0808642>



Zack Marker strip, flat, Strip, white, unmarked, can be labeled with: PLOTMARK, CMS-P1-PLOTTER, mounting type: latching, for terminal block width: 5 mm, Number of individual labels: 10, text field height: 5.15 mm, text field width: 5.15 mm

ZBF 5 CUS - Zack Marker strip, flat

0825025

<https://www.phoenixcontact.com/pc/products/0825025>



Zack Marker strip, flat, can be ordered: Strip, white, labeled according to customer specifications, mounting type: snap into flat marker groove, for terminal block width: 5 mm, Number of individual labels: 10, text field height: 5.15 mm, text field width: 5.15 mm

XT 2,5/1P-PE - Protective conductor terminal block

1544638

<https://www.phoenixcontact.com/pc/products/1544638>

ZBF 5,LGS:FORTL.ZAHLEN - Zack Marker strip, flat

0808671

<https://www.phoenixcontact.com/pc/products/0808671>



Zack Marker strip, flat, Strip, white, labeled, printed horizontally: consecutive numbers 1 ... 10, 11 ... 20, etc. up to 491 ... 500, mounting type: latching, for terminal block width: 5 mm, Number of individual labels: 10, text field height: 5.15 mm, text field width: 5.15 mm

ZBF 5,QR:FORTL.ZAHLEN - Zack Marker strip, flat

0808697

<https://www.phoenixcontact.com/pc/products/0808697>



Zack Marker strip, flat, Strip, white, labeled, Printed vertically: consecutive numbers 1 ... 10, 11 ... 20, etc. up to 91 ... 100, mounting type: latching, for terminal block width: 5 mm, Number of individual labels: 10, text field height: 5.15 mm, text field width: 5.15 mm

XT 2,5/1P-PE - Protective conductor terminal block

1544638

<https://www.phoenixcontact.com/pc/products/1544638>

ZBF 5,LGS:GERADE ZAHLEN - Zack Marker strip, flat

0810821

<https://www.phoenixcontact.com/pc/products/0810821>



Zack Marker strip, flat, Strip, white, labeled, printed horizontally: consecutive even numbers 2 ... 20, 22 ... 40, etc. up to 82 ... 100, mounting type: latching, for terminal block width: 5 mm, Number of individual labels: 10, text field height: 5.15 mm, text field width: 5.15 mm

ZBF 5,LGS:UNGERADE ZAHLEN - Zack Marker strip, flat

0810863

<https://www.phoenixcontact.com/pc/products/0810863>



Zack Marker strip, flat, Strip, white, labeled, printed horizontally: Odd numbers 1 - 19, 21 - 39, etc. up to 81 - 99, mounting type: latching, for terminal block width: 5 mm, Number of individual labels: 10, text field height: 5.15 mm, text field width: 5.15 mm

XT 2,5/1P-PE - Protective conductor terminal block



1544638

<https://www.phoenixcontact.com/pc/products/1544638>

UC-TMF 5 - Marker for terminal blocks

0818153

<https://www.phoenixcontact.com/pc/products/0818153>

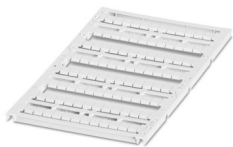


Marker for terminal blocks, Sheet, white, unmarked, can be labeled with: BLUEMARK E.CARD, BLUEMARK ID COLOR, BLUEMARK ID, BLUEMARK CLED, PLOTMARK, CMS-P1-PLOTTER, mounting type: latching, for terminal block width: 5.2 mm, Number of individual labels: 96, text field height: 5.1 mm, text field width: 4.6 mm

UC-TMF 5 CUS - Marker for terminal blocks

0824638

<https://www.phoenixcontact.com/pc/products/0824638>



Marker for terminal blocks, can be ordered: by sheet, white, labeled according to customer specifications, mounting type: snap into flat marker groove, for terminal block width: 5.2 mm, Number of individual labels: 96, text field height: 5.1 mm, text field width: 4.6 mm

XT 2,5/1P-PE - Protective conductor terminal block



1544638

<https://www.phoenixcontact.com/pc/products/1544638>

UCT-TMF 5 - Marker for terminal blocks

0828744

<https://www.phoenixcontact.com/pc/products/0828744>



Marker for terminal blocks, Sheet, white, unmarked, can be labeled with: BLUEMARK E.CARD, BLUEMARK ID COLOR, BLUEMARK ID, BLUEMARK CLED, THERMOMARK PRIME 2.0, THERMOMARK PRIME, THERMOMARK CARD 2.0, THERMOMARK CARD, TOPMARK NEO, TOPMARK LASER, mounting type: latching, for terminal block width: 5.2 mm, Number of individual labels: 72, text field height: 4.7 mm, text field width: 4.4 mm

UCT-TMF 5 CUS - Marker for terminal blocks

0829658

<https://www.phoenixcontact.com/pc/products/0829658>



Marker for terminal blocks, can be ordered: by sheet, white, labeled according to customer specifications, mounting type: snap into flat marker groove, for terminal block width: 5.2 mm, Number of individual labels: 72, text field height: 4.7 mm, text field width: 4.4 mm

XT 2,5/1P-PE - Protective conductor terminal block



1544638

<https://www.phoenixcontact.com/pc/products/1544638>

MPS-MT - Test plug

0201744

<https://www.phoenixcontact.com/pc/products/0201744>



Test plug, with solder connection up to 1 mm² conductor cross-section, number of positions: 1, color: gray

MPS-IH WH - Insulating sleeve

0201663

<https://www.phoenixcontact.com/pc/products/0201663>

Insulating sleeve, color: white



XT 2,5/1P-PE - Protective conductor terminal block

1544638

<https://www.phoenixcontact.com/pc/products/1544638>

MPS-IH RD - Insulating sleeve

0201676

<https://www.phoenixcontact.com/pc/products/0201676>

Insulating sleeve, color: red

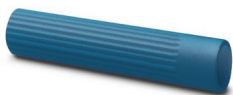


MPS-IH BU - Insulating sleeve

0201689

<https://www.phoenixcontact.com/pc/products/0201689>

Insulating sleeve, color: blue



XT 2,5/1P-PE - Protective conductor terminal block



1544638

<https://www.phoenixcontact.com/pc/products/1544638>

MPS-IH YE - Insulating sleeve

0201692

<https://www.phoenixcontact.com/pc/products/0201692>

Insulating sleeve, color: yellow



MPS-IH GN - Insulating sleeve

0201702

<https://www.phoenixcontact.com/pc/products/0201702>

Insulating sleeve, color: green



XT 2,5/1P-PE - Protective conductor terminal block

1544638

<https://www.phoenixcontact.com/pc/products/1544638>



MPS-IH GY - Insulating sleeve

0201728

<https://www.phoenixcontact.com/pc/products/0201728>

Insulating sleeve, color: gray



MPS-IH BK - Insulating sleeve

0201731

<https://www.phoenixcontact.com/pc/products/0201731>

Insulating sleeve, color: black



XT 2,5/1P-PE - Protective conductor terminal block

1544638

<https://www.phoenixcontact.com/pc/products/1544638>



ISH 2,5/0,2 - Insulating sleeve

3002843

<https://www.phoenixcontact.com/pc/products/3002843>



Insulating sleeve, color: white

ISH 2,5/0,5 - Insulating sleeve

3002856

<https://www.phoenixcontact.com/pc/products/3002856>



Insulating sleeve, color: gray

XT 2,5/1P-PE - Protective conductor terminal block

1544638

<https://www.phoenixcontact.com/pc/products/1544638>



ISH 2,5/1,0 - Insulating sleeve

3002869

<https://www.phoenixcontact.com/pc/products/3002869>



Insulating sleeve, color: black

PAI-4-FIX-5/6 BU - Test adapter

3035975

<https://www.phoenixcontact.com/pc/products/3035975>



4 mm test adapter, for terminal blocks with 5.2 mm and 6.2 mm pitch

XT 2,5/1P-PE - Protective conductor terminal block



1544638

<https://www.phoenixcontact.com/pc/products/1544638>

PAI-4-FIX-5/6 OG - Test adapter

3035974

<https://www.phoenixcontact.com/pc/products/3035974>



4 mm test adapter, for terminal blocks with 5.2 mm and 6.2 mm pitch

PAI-4-FIX-5/6 YE - Test adapter

3035977

<https://www.phoenixcontact.com/pc/products/3035977>



4 mm test adapter, for terminal blocks with 5.2 mm and 6.2 mm pitch

XT 2,5/1P-PE - Protective conductor terminal block



1544638

<https://www.phoenixcontact.com/pc/products/1544638>

PAI-4-FIX-5/6 RD - Test adapter

3035976

<https://www.phoenixcontact.com/pc/products/3035976>



4 mm test adapter, for terminal blocks with 5.2 mm and 6.2 mm pitch

PAI-4-FIX-5/6 GN - Test adapter

3035978

<https://www.phoenixcontact.com/pc/products/3035978>



4 mm test adapter, for terminal blocks with 5.2 mm and 6.2 mm pitch

XT 2,5/1P-PE - Protective conductor terminal block



1544638

<https://www.phoenixcontact.com/pc/products/1544638>

PAI-4-FIX-5/6 BK - Test adapter

3035980

<https://www.phoenixcontact.com/pc/products/3035980>



4 mm test adapter, for terminal blocks with 5.2 mm and 6.2 mm pitch

PAI-4-FIX-5/6 GY - Test adapter

3035982

<https://www.phoenixcontact.com/pc/products/3035982>



4 mm test adapter, for terminal blocks with 5.2 mm and 6.2 mm pitch

XT 2,5/1P-PE - Protective conductor terminal block



1544638

<https://www.phoenixcontact.com/pc/products/1544638>

PAI-4-FIX-5/6 VT - Test adapter

3035979

<https://www.phoenixcontact.com/pc/products/3035979>



4 mm test adapter, for terminal blocks with 5.2 mm and 6.2 mm pitch

PAI-4-FIX-5/6 BN - Test adapter

3035981

<https://www.phoenixcontact.com/pc/products/3035981>



4 mm test adapter, for terminal blocks with 5.2 mm and 6.2 mm pitch

XT 2,5/1P-PE - Protective conductor terminal block

1544638

<https://www.phoenixcontact.com/pc/products/1544638>



PAI-4-FIX-5/6 WH - Test adapter

3035983

<https://www.phoenixcontact.com/pc/products/3035983>



4 mm test adapter, for terminal blocks with 5.2 mm and 6.2 mm pitch

PS-5 - Test plug

3030983

<https://www.phoenixcontact.com/pc/products/3030983>



Test plug, Modular test plug, number of positions: 1, color: red

XT 2,5/1P-PE - Protective conductor terminal block



1544638

<https://www.phoenixcontact.com/pc/products/1544638>

DP PS-5 - Spacer plate

3036725

<https://www.phoenixcontact.com/pc/products/3036725>



Spacer plate, depth: 29 mm, width: 5.2 mm, height: 22.4 mm, number of positions: 1, color: red

PS-5/2,3MM RD - Test plug

3038723

<https://www.phoenixcontact.com/pc/products/3038723>



Test plug, number of positions: 1, color: red

XT 2,5/1P-PE - Protective conductor terminal block

1544638

<https://www.phoenixcontact.com/pc/products/1544638>

PP-H 2,5/ 1 - Plug

3209866

<https://www.phoenixcontact.com/pc/products/3209866>



Plug, nom. voltage: 500 V, nominal current: 24 A, number of connections: 1, number of positions: 1, connection method: Push-in connection, Rated cross section: 2.5 mm², 1 level, cross section: 0.14 mm² - 4 mm², mounting type: Plug-in mounting, color: gray

PP-H 2,5/ 1 GNYE - Plug

3210020

<https://www.phoenixcontact.com/pc/products/3210020>



Plug, nom. voltage: 500 V, nominal current: 24 A, number of connections: 1, number of positions: 1, connection method: Push-in connection, Rated cross section: 2.5 mm², 1 level, cross section: 0.14 mm² - 4 mm², color: green-yellow

XT 2,5/1P-PE - Protective conductor terminal block



1544638

<https://www.phoenixcontact.com/pc/products/1544638>

PP-H 2,5/ 2 - Plug

3209879

<https://www.phoenixcontact.com/pc/products/3209879>



Plug, nom. voltage: 500 V, nominal current: 24 A, number of connections: 2, number of positions: 2, connection method: Push-in connection, Rated cross section: 2.5 mm², 1 level, cross section: 0.14 mm² - 4 mm², mounting type: Plug-in mounting, color: gray

PP-H 2,5/ 3 - Plug

3209882

<https://www.phoenixcontact.com/pc/products/3209882>



Plug, nom. voltage: 500 V, nominal current: 24 A, number of connections: 3, number of positions: 3, connection method: Push-in connection, Rated cross section: 2.5 mm², 1 level, cross section: 0.14 mm² - 4 mm², color: gray

XT 2,5/1P-PE - Protective conductor terminal block

1544638

<https://www.phoenixcontact.com/pc/products/1544638>

PP-H 2,5/ 3 (1GNYE/2GY) - Plug

3209883

<https://www.phoenixcontact.com/pc/products/3209883>



Plug, nom. voltage: 500 V, nominal current: 24 A, number of connections: 3, number of positions: 3, connection method: Push-in connection, Rated cross section: 2.5 mm², 1 level, cross section: 0.14 mm² - 4 mm², color: gray

PP-H 2,5/ 4 - Plug

3209895

<https://www.phoenixcontact.com/pc/products/3209895>



Plug, nom. voltage: 500 V, nominal current: 24 A, number of connections: 4, number of positions: 4, connection method: Push-in connection, Rated cross section: 2.5 mm², 1 level, cross section: 0.14 mm² - 4 mm², color: gray

XT 2,5/1P-PE - Protective conductor terminal block

1544638

<https://www.phoenixcontact.com/pc/products/1544638>

PP-H 2,5/ 4 (1GNYE/3GY) - Plug

3209896

<https://www.phoenixcontact.com/pc/products/3209896>



Plug, nom. voltage: 500 V, nominal current: 24 A, number of connections: 4, number of positions: 4, connection method: Push-in connection, Rated cross section: 2.5 mm², 1 level, cross section: 0.14 mm² - 4 mm², mounting type: Plug-in mounting, color: gray

PP-H 2,5/ 5 - Plug

3209905

<https://www.phoenixcontact.com/pc/products/3209905>



Plug, nom. voltage: 500 V, nominal current: 24 A, number of connections: 5, number of positions: 5, connection method: Push-in connection, Rated cross section: 2.5 mm², 1 level, cross section: 0.14 mm² - 4 mm², mounting type: Plug-in mounting, color: gray

XT 2,5/1P-PE - Protective conductor terminal block

1544638

<https://www.phoenixcontact.com/pc/products/1544638>

PP-H 2,5/ 6 - Plug

3209918

<https://www.phoenixcontact.com/pc/products/3209918>



Plug, nom. voltage: 500 V, nominal current: 24 A, number of connections: 6, number of positions: 6, connection method: Push-in connection, Rated cross section: 2.5 mm², 1 level, cross section: 0.14 mm² - 4 mm², mounting type: Plug-in mounting, color: gray

PP-H 2,5/ 7 - Plug

3209921

<https://www.phoenixcontact.com/pc/products/3209921>



Plug, nom. voltage: 500 V, nominal current: 24 A, number of connections: 7, number of positions: 7, connection method: Push-in connection, Rated cross section: 2.5 mm², 1 level, cross section: 0.14 mm² - 4 mm², color: gray

XT 2,5/1P-PE - Protective conductor terminal block

1544638

<https://www.phoenixcontact.com/pc/products/1544638>

PP-H 2,5/ 7 (1GNYE/6GY) - Plug

3209922

<https://www.phoenixcontact.com/pc/products/3209922>



Plug, nom. voltage: 500 V, nominal current: 24 A, number of connections: 7, number of positions: 7, connection method: Push-in connection, Rated cross section: 2.5 mm², 1 level, cross section: 0.14 mm² - 4 mm², color: gray

PP-H 2,5/ 8 - Plug

3209934

<https://www.phoenixcontact.com/pc/products/3209934>



Plug, nom. voltage: 500 V, nominal current: 24 A, number of connections: 8, number of positions: 8, connection method: Push-in connection, Rated cross section: 2.5 mm², 1 level, cross section: 0.14 mm² - 4 mm², mounting type: Plug-in mounting, color: gray

XT 2,5/1P-PE - Protective conductor terminal block

1544638

<https://www.phoenixcontact.com/pc/products/1544638>

PP-H 2,5/ 9 - Plug

3209947

<https://www.phoenixcontact.com/pc/products/3209947>



Plug, nom. voltage: 500 V, nominal current: 24 A, number of connections: 9, number of positions: 9, connection method: Push-in connection, Rated cross section: 2.5 mm², 1 level, cross section: 0.14 mm² - 4 mm², color: gray

PP-H 2,5/1-L - Plug

3210062

<https://www.phoenixcontact.com/pc/products/3210062>



Plug, nom. voltage: 500 V, nominal current: 24 A, number of connections: 1, number of positions: 1, connection method: Push-in connection, Rated cross section: 2.5 mm², 1 level, cross section: 0.14 mm² - 4 mm², color: gray

XT 2,5/1P-PE - Protective conductor terminal block

1544638

<https://www.phoenixcontact.com/pc/products/1544638>

PP-H 2,5/1-L GNYE - Plug

3210088

<https://www.phoenixcontact.com/pc/products/3210088>



Plug, nom. voltage: 500 V, nominal current: 24 A, number of connections: 1, number of positions: 1, connection method: Push-in connection, Rated cross section: 2.5 mm², 1 level, cross section: 0.14 mm² - 4 mm², color: green-yellow

PP-H 2,5/1-M - Plug

3210091

<https://www.phoenixcontact.com/pc/products/3210091>



Plug, nom. voltage: 500 V, nominal current: 24 A, number of positions: 1, connection method: Push-in connection, 1 level, Rated cross section: 2.5 mm², cross section: 0.14 mm² - 4 mm², color: gray

XT 2,5/1P-PE - Protective conductor terminal block

1544638

<https://www.phoenixcontact.com/pc/products/1544638>

PP-H 2,5/1-M GNYE - Plug

3210114

<https://www.phoenixcontact.com/pc/products/3210114>



Plug, nom. voltage: 500 V, nominal current: 24 A, number of connections: 1, number of positions: 1, connection method: Push-in connection, Rated cross section: 2.5 mm², 1 level, cross section: 0.14 mm² - 4 mm², color: green-yellow

PP-H 2,5/1-R - Plug

3210127

<https://www.phoenixcontact.com/pc/products/3210127>



Plug, nom. voltage: 500 V, nominal current: 24 A, number of connections: 1, number of positions: 1, connection method: Push-in connection, Rated cross section: 2.5 mm², 1 level, cross section: 0.14 mm² - 4 mm², color: gray

XT 2,5/1P-PE - Protective conductor terminal block



1544638

<https://www.phoenixcontact.com/pc/products/1544638>

PP-H 2,5/1-R GNYE - Plug

3210143

<https://www.phoenixcontact.com/pc/products/3210143>



Plug, nom. voltage: 500 V, nominal current: 24 A, number of connections: 1, number of positions: 1, connection method: Push-in connection, Rated cross section: 2.5 mm², 1 level, cross section: 0.14 mm² - 4 mm², color: green-yellow

PP-H 2,5/10 - Plug

3209950

<https://www.phoenixcontact.com/pc/products/3209950>



Plug, nom. voltage: 500 V, nominal current: 24 A, number of connections: 10, number of positions: 10, connection method: Push-in connection, Rated cross section: 2.5 mm², 1 level, cross section: 0.14 mm² - 4 mm², color: gray

XT 2,5/1P-PE - Protective conductor terminal block

1544638

<https://www.phoenixcontact.com/pc/products/1544638>

PP-H 2,5/11 - Plug

3209963

<https://www.phoenixcontact.com/pc/products/3209963>



Plug, nom. voltage: 500 V, nominal current: 24 A, number of connections: 11, number of positions: 11, connection method: Push-in connection, Rated cross section: 2.5 mm², 1 level, cross section: 0.14 mm² - 4 mm², color: gray

PP-H 2,5/12 - Plug

3209976

<https://www.phoenixcontact.com/pc/products/3209976>



Plug, nom. voltage: 500 V, nominal current: 24 A, number of connections: 12, number of positions: 12, connection method: Push-in connection, Rated cross section: 2.5 mm², 1 level, cross section: 0.14 mm² - 4 mm², color: gray

XT 2,5/1P-PE - Protective conductor terminal block



1544638

<https://www.phoenixcontact.com/pc/products/1544638>

PP-H 2,5/12 (1GNYE/11GY) - Plug

3209977

<https://www.phoenixcontact.com/pc/products/3209977>



Plug, nom. voltage: 500 V, nominal current: 24 A, number of connections: 12, number of positions: 12, connection method: Push-in connection, Rated cross section: 2.5 mm², 1 level, cross section: 0.14 mm² - 4 mm², color: gray

PP-H 2,5/13 - Plug

3209989

<https://www.phoenixcontact.com/pc/products/3209989>



Plug, nom. voltage: 500 V, nominal current: 24 A, number of connections: 13, number of positions: 13, connection method: Push-in connection, Rated cross section: 2.5 mm², 1 level, cross section: 0.14 mm² - 4 mm², color: gray

XT 2,5/1P-PE - Protective conductor terminal block



1544638

<https://www.phoenixcontact.com/pc/products/1544638>

PP-H 2,5/14 - Plug

3209992

<https://www.phoenixcontact.com/pc/products/3209992>



Plug, nom. voltage: 500 V, nominal current: 24 A, number of connections: 14, number of positions: 14, connection method: Push-in connection, Rated cross section: 2.5 mm², 1 level, cross section: 0.14 mm² - 4 mm², color: gray

PP-H 2,5/15 - Plug

3210004

<https://www.phoenixcontact.com/pc/products/3210004>



Plug, nom. voltage: 500 V, nominal current: 24 A, number of connections: 15, number of positions: 15, connection method: Push-in connection, Rated cross section: 2.5 mm², 1 level, cross section: 0.14 mm² - 4 mm², color: gray

XT 2,5/1P-PE - Protective conductor terminal block

1544638

<https://www.phoenixcontact.com/pc/products/1544638>

PP-H 2,5/20 - Plug

3061884

<https://www.phoenixcontact.com/pc/products/3061884>



Plug, nom. voltage: 500 V, nominal current: 24 A, number of connections: 20, number of positions: 20, connection method: Push-in connection, Rated cross section: 2.5 mm², 1 level, cross section: 0.14 mm² - 4 mm², color: gray

PP-H 2,5/24 - Plug

3061897

<https://www.phoenixcontact.com/pc/products/3061897>



Plug, nom. voltage: 500 V, nominal current: 24 A, number of connections: 24, number of positions: 24, connection method: Push-in connection, Rated cross section: 2.5 mm², 1 level, cross section: 0.14 mm² - 4 mm², color: gray

XT 2,5/1P-PE - Protective conductor terminal block

1544638

<https://www.phoenixcontact.com/pc/products/1544638>



ST 2,5-QUATTRO/2P-F - Screw flange

3209853

<https://www.phoenixcontact.com/pc/products/3209853>

Screw flange, for screwing COMBI plugs, with the same structure and pitch as the relevant COMBI terminal blocks



SZF 1-0,6X3,5 - Screwdriver

1204517

<https://www.phoenixcontact.com/pc/products/1204517>

Actuation tool, for ST terminal blocks, also suitable for use as a bladed screwdriver, size: 0.6 x 3.5 x 100 mm, 2-component grip, with non-slip grip



XT 2,5/1P-PE - Protective conductor terminal block

1544638

<https://www.phoenixcontact.com/pc/products/1544638>

ST-BW - Actuation tool

1207608

<https://www.phoenixcontact.com/pc/products/1207608>

Actuation tool, for all 2.5 mm² - 4.0 mm² spring-cages



LP 2,5/ 1 - Plug

1071712

<https://www.phoenixcontact.com/pc/products/1071712>

Plug, nom. voltage: 800 V, nominal current: 24 A, number of positions: 1, connection method: Lever Push-in connection, Rated cross section: 2.5 mm², cross section: 0.14 mm² - 4 mm², color: gray



XT 2,5/1P-PE - Protective conductor terminal block

1544638

<https://www.phoenixcontact.com/pc/products/1544638>

LP 2,5/ 2 - Plug

1071713

<https://www.phoenixcontact.com/pc/products/1071713>



Plug, nom. voltage: 800 V, nominal current: 24 A, number of positions: 2, connection method: Lever Push-in connection, Rated cross section: 2.5 mm², cross section: 0.14 mm²- 4 mm², color: gray

LP 2,5/ 3 - Plug

1071714

<https://www.phoenixcontact.com/pc/products/1071714>



Plug, nom. voltage: 800 V, nominal current: 24 A, number of positions: 3, connection method: Lever Push-in connection, Rated cross section: 2.5 mm², cross section: 0.14 mm²- 4 mm², color: gray

XT 2,5/1P-PE - Protective conductor terminal block

1544638

<https://www.phoenixcontact.com/pc/products/1544638>

LP 2,5/ 4 - Plug

1071715

<https://www.phoenixcontact.com/pc/products/1071715>



Plug, nom. voltage: 800 V, nominal current: 24 A, number of positions: 4, connection method: Lever Push-in connection, Rated cross section: 2.5 mm², cross section: 0.14 mm²- 4 mm², color: gray

LP 2,5/ 5 - Plug

1071716

<https://www.phoenixcontact.com/pc/products/1071716>



Plug, nom. voltage: 800 V, nominal current: 24 A, number of positions: 5, connection method: Lever Push-in connection, Rated cross section: 2.5 mm², cross section: 0.14 mm²- 4 mm², color: gray

XT 2,5/1P-PE - Protective conductor terminal block

1544638

<https://www.phoenixcontact.com/pc/products/1544638>

LP 2,5/ 6 - Plug

1071717

<https://www.phoenixcontact.com/pc/products/1071717>



Plug, nom. voltage: 800 V, nominal current: 24 A, number of positions: 6, connection method: Lever Push-in connection, Rated cross section: 2.5 mm², cross section: 0.14 mm²- 4 mm², color: gray

LP 2,5/ 7 - Plug

1071718

<https://www.phoenixcontact.com/pc/products/1071718>



Plug, nom. voltage: 800 V, nominal current: 24 A, number of positions: 7, connection method: Lever Push-in connection, Rated cross section: 2.5 mm², cross section: 0.14 mm²- 4 mm², color: gray

XT 2,5/1P-PE - Protective conductor terminal block

1544638

<https://www.phoenixcontact.com/pc/products/1544638>

LP 2,5/ 8 - Plug

1071719

<https://www.phoenixcontact.com/pc/products/1071719>



Plug, nom. voltage: 800 V, nominal current: 24 A, number of positions: 8, connection method: Lever Push-in connection, Rated cross section: 2.5 mm², cross section: 0.14 mm²- 4 mm², color: gray

LP 2,5/ 9 - Plug

1071720

<https://www.phoenixcontact.com/pc/products/1071720>



Plug, nom. voltage: 800 V, nominal current: 24 A, number of positions: 9, connection method: Lever Push-in connection, Rated cross section: 2.5 mm², cross section: 0.14 mm²- 4 mm², color: gray

XT 2,5/1P-PE - Protective conductor terminal block

1544638

<https://www.phoenixcontact.com/pc/products/1544638>

LP 2,5/10 - Plug

1071721

<https://www.phoenixcontact.com/pc/products/1071721>



Plug, nom. voltage: 800 V, nominal current: 24 A, number of positions: 10, connection method: Lever Push-in connection, Rated cross section: 2.5 mm², cross section: 0.14 mm²- 4 mm², color: gray

LP 2,5/11 - Plug

1071722

<https://www.phoenixcontact.com/pc/products/1071722>



Plug, nom. voltage: 800 V, nominal current: 24 A, number of positions: 11, connection method: Lever Push-in connection, Rated cross section: 2.5 mm², cross section: 0.14 mm²- 4 mm², color: gray

XT 2,5/1P-PE - Protective conductor terminal block

1544638

<https://www.phoenixcontact.com/pc/products/1544638>

LP 2,5/12 - Plug

1071723

<https://www.phoenixcontact.com/pc/products/1071723>



Plug, nom. voltage: 800 V, nominal current: 24 A, number of positions: 12, connection method: Lever Push-in connection, Rated cross section: 2.5 mm², cross section: 0.14 mm²- 4 mm², color: gray

LP 2,5/13 - Plug

1071724

<https://www.phoenixcontact.com/pc/products/1071724>



Plug, nom. voltage: 800 V, nominal current: 24 A, number of positions: 13, connection method: Lever Push-in connection, Rated cross section: 2.5 mm², cross section: 0.14 mm²- 4 mm², color: gray

XT 2,5/1P-PE - Protective conductor terminal block

1544638

<https://www.phoenixcontact.com/pc/products/1544638>

LP 2,5/14 - Plug

1071725

<https://www.phoenixcontact.com/pc/products/1071725>



Plug, nom. voltage: 800 V, nominal current: 24 A, number of positions: 14, connection method: Lever Push-in connection, Rated cross section: 2.5 mm², cross section: 0.14 mm²- 4 mm², color: gray

LP 2,5/15 - Plug

1071726

<https://www.phoenixcontact.com/pc/products/1071726>



Plug, nom. voltage: 800 V, nominal current: 24 A, number of positions: 15, connection method: Lever Push-in connection, Rated cross section: 2.5 mm², cross section: 0.14 mm²- 4 mm², color: gray

XT 2,5/1P-PE - Protective conductor terminal block

1544638

<https://www.phoenixcontact.com/pc/products/1544638>

LP 2,5/ 1 BU - Plug

1071727

<https://www.phoenixcontact.com/pc/products/1071727>



Plug, nom. voltage: 800 V, nominal current: 24 A, number of positions: 1, connection method: Lever Push-in connection, Rated cross section: 2.5 mm², cross section: 0.14 mm²- 4 mm², color: blue

LP 2,5/ 1 GNYE - Plug

1071728

<https://www.phoenixcontact.com/pc/products/1071728>



Plug, nom. voltage: 800 V, nominal current: 24 A, number of positions: 1, connection method: Lever Push-in connection, Rated cross section: 2.5 mm², cross section: 0.14 mm²- 4 mm², color: green-yellow

XT 2,5/1P-PE - Protective conductor terminal block

1544638

<https://www.phoenixcontact.com/pc/products/1544638>

LP 2,5/ 1-L - Plug

1071729

<https://www.phoenixcontact.com/pc/products/1071729>



Plug, nom. voltage: 800 V, nominal current: 24 A, number of positions: 1, connection method: Lever Push-in connection, Rated cross section: 2.5 mm², cross section: 0.14 mm²- 4 mm², color: gray

LP 2,5/ 1-L BU - Plug

1071730

<https://www.phoenixcontact.com/pc/products/1071730>



Plug, nom. voltage: 800 V, nominal current: 24 A, number of positions: 1, connection method: Lever Push-in connection, Rated cross section: 2.5 mm², cross section: 0.14 mm²- 4 mm², color: blue

XT 2,5/1P-PE - Protective conductor terminal block

1544638

<https://www.phoenixcontact.com/pc/products/1544638>

LP 2,5/ 1-L GNYE - Plug

1071731

<https://www.phoenixcontact.com/pc/products/1071731>



Plug, nom. voltage: 800 V, nominal current: 24 A, number of positions: 1, connection method: Lever Push-in connection, Rated cross section: 2.5 mm², cross section: 0.14 mm²- 4 mm², color: green-yellow

LP 2,5/ 1-M - Plug

1071732

<https://www.phoenixcontact.com/pc/products/1071732>



Plug, nom. voltage: 800 V, nominal current: 24 A, number of positions: 1, connection method: Lever Push-in connection, Rated cross section: 2.5 mm², cross section: 0.14 mm²- 4 mm², color: gray

XT 2,5/1P-PE - Protective conductor terminal block

1544638

<https://www.phoenixcontact.com/pc/products/1544638>

LP 2,5/ 1-M BU - Plug

1071733

<https://www.phoenixcontact.com/pc/products/1071733>



Plug, nom. voltage: 800 V, nominal current: 24 A, number of positions: 1, connection method: Lever Push-in connection, Rated cross section: 2.5 mm², cross section: 0.14 mm²- 4 mm², color: blue

LP 2,5/ 1-M GNYE - Plug

1071734

<https://www.phoenixcontact.com/pc/products/1071734>



Plug, nom. voltage: 800 V, nominal current: 24 A, number of positions: 1, connection method: Lever Push-in connection, Rated cross section: 2.5 mm², cross section: 0.14 mm²- 4 mm², color: green-yellow

XT 2,5/1P-PE - Protective conductor terminal block

1544638

<https://www.phoenixcontact.com/pc/products/1544638>

LP 2,5/ 1-R - Plug

1071735

<https://www.phoenixcontact.com/pc/products/1071735>



Plug, nom. voltage: 800 V, nominal current: 24 A, number of positions: 1, connection method: Lever Push-in connection, Rated cross section: 2.5 mm², cross section: 0.14 mm²- 4 mm², color: gray

LP 2,5/ 1-R BU - Plug

1071736

<https://www.phoenixcontact.com/pc/products/1071736>



Plug, nom. voltage: 800 V, nominal current: 24 A, number of positions: 1, connection method: Lever Push-in connection, Rated cross section: 2.5 mm², cross section: 0.14 mm²- 4 mm², color: blue

XT 2,5/1P-PE - Protective conductor terminal block



1544638

<https://www.phoenixcontact.com/pc/products/1544638>

LP 2,5/ 1-R GNYE - Plug

1071737

<https://www.phoenixcontact.com/pc/products/1071737>



Plug, nom. voltage: 800 V, nominal current: 24 A, number of positions: 1, connection method: Lever Push-in connection, Rated cross section: 2.5 mm², cross section: 0.14 mm²- 4 mm², color: green-yellow

PROJECT COMPLETE - Software

1050453

<https://www.phoenixcontact.com/pc/products/1050453>



Intuitive planning and marking software for configuring terminal strips and for professional marking of marking materials for terminal blocks, conductors, cables, devices, and systems. The software is available for download

Phoenix Contact 2026 © - all rights reserved
<https://www.phoenixcontact.com>

PHOENIX CONTACT GmbH & Co. KG
Flachsmarktstraße 8
D-32825 Blomberg
+49 (0) 5235-3 00
info@phoenixcontact.com