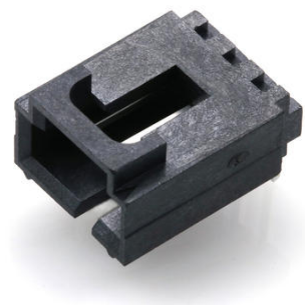




Part Number : [1719740003](#)
Product Description : 2.54mm Pitch SL Header,
Single Row, Right-Angle, LCP, Shrouded, Through Hole,
Matte Tin (Sn) Plating, 3 Circuits
Series Number : 171974
Status : Active
Product Category : PCB Headers and Receptacles



Documents & Resources

Drawings

[1719740003_sd.pdf](#)
[1719740000-PK-000.pdf](#)

3D Models and Design Files


[STEP AP242](#)
[SOLIDWORKS](#)
[Creo](#)
[Symbol and Footprint \(Multi-Format\)](#)

Specifications

[1719710000-PS-000.pdf](#)

Product Environment Compliance

Compliance

GADSL/IMDS	Compliant with Exemption 44; 33
China RoHS	 per SJ/T 11365-2006
EU ELV	Not Relevant
Low-Halogen Status	Low-Halogen per IEC 61249-2-21
REACH SVHC	Not Contained per D(2025)4165-DC (25 June 2025)
EU RoHS	Compliant per EU 2015/863

[Compliance Statements](#)

- EU RoHS

- REACH SVHC
- Low-Halogen

Industry Documents

- IPC 1752A Class C
- IPC 1752A Class D
- Molex Product Compliance Declaration
- IEC-62474
- chemSHERPA (xml)

Substances of Interest

- PFAS

EU RoHS Certificate of Compliance

Additional Product Compliance Information

Part Details

General

Status	Active
Category	PCB Headers and Receptacles
Series	171974
Description	2.54mm Pitch SL Header, Single Row, Right-Angle, LCP, Shrouded, Through Hole, Matte Tin (Sn) Plating, 3 Circuits
Application	Signal, Wire-to-Board
Component Type	PCB Header
Product Name	SL
UPC	191128196529

Electrical

Current - Maximum per Contact	3.0A
Voltage - Maximum	250V

Physical

Breakaway	No
Circuits (Loaded)	3
Circuits (maximum)	3
Color - Resin	Black
First Mate / Last Break	No

Glow-Wire Capable	No
Guide to Mating Part	No
Keying to Mating Part	None
Lock to Mating Part	Yes
Material - Metal	Brass
Material - Plating Mating	Matte Tin
Material - Plating Termination	Matte Tin
Material - Resin	Liquid Crystal Polymer
Net Weight	0.805/g
Number of Rows	1
Orientation	Right Angle
Packaging Type	Tube
PCB Locator	No
PCB Retention	None
PCB Thickness - Recommended	1.57mm
PC Tail Length	3.30mm
Pitch - Mating Interface	2.54mm
Pitch - Termination Interface	2.54mm
Plating min - Mating	2.540µm
Plating min - Termination	2.540µm
Polarized to Mating Part	Yes
Polarized to PCB	Yes
Shrouded	Fully
Temperature Range - Operating	-40° to +105°C
Termination Interface Style	Through Hole

Mates With / Use With

Mates with Part(s)

Description	Part Number
SL Single Row Female Insulation Displacement Connector Assemblies	<u>70400</u>
SL Single Row Crimp Housings and CPA Retainers	<u>70066</u>
SL Single Row Female Receptacles	

	<u>70430</u>
--	--------------

This document was generated on Aug 05, 2025