

XVEL36

Ø 70 mm tower light - steady - blue - up to IP42
- ≤ 240 V



Main

Range of product	Harmony XVE Optimum
Product or component type	Complete illuminated beacon
Beacon/Indicator bk unit type	1 short fixing base 1 screw fixing cover 1 illuminated unit 1 base unit
Signalling type	Steady
Component name	XVE
Light source	Blue bulb not included
Bulb type	Incandescent with BA 15d base
[Us] rated supply voltage	≤ 240 V AC/DC

Complementary

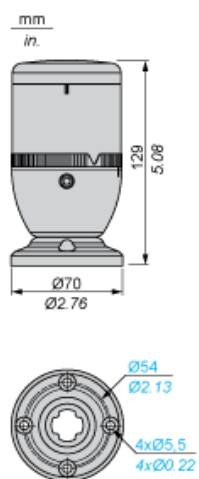
Mounting diameter	70 mm
Power dissipation in W	≤ 5 W
Connections - terminals	Screw clamp terminals: ≤ 1 x 1.5 mm ² with cable end
Marking	CE
[Ui] rated insulation voltage	250 V conforming to IEC 60947-1
Nominal voltage limit	0.85...1.1 Un conforming to IEC 60947-5-1
[Uimp] rated impulse withstand voltage	4 kV conforming to IEC 60947-1
Luminance	640 cd/m ²
CAD overall width	70 mm
CAD overall height	129 mm
CAD overall depth	70 mm
Terminals description ISO n°1	(COM-1)PW (GND)GROUND
Product weight	0.245 kg

Environment

Standards	EN/IEC 60947-1 EN/IEC 60947-5-1
Product certifications	CCC CSA UL
Ambient air temperature for storage	-40...70 °C
Ambient air temperature for operation	-25...55 °C
Class of protection against electric shock	Class I plastic tube mounting conforming to IEC 61140 Class I aluminium tube mounting conforming to IEC 61140
Protective treatment	TC
IP degree of protection	IP42 in vertical position conforming to IEC 60529 IP40 in any position except vertical position conforming to IEC 60529

Illuminated Beacon

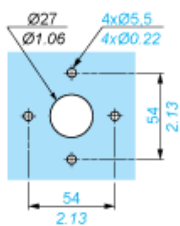
Dimensions



Illuminated Beacon

Panel Cut-out for Mounting Directly on Fixing Base

mm
in.



Illuminated Beacon

Wiring Diagram

