

# universal key JointKey Quadro



A double rotating mechanism allows 8 different locking systems. The universal key can be used as a high torque T-handle or compact-mated variant. The brand new 1/4"- socket wrench holder allows a comfortable usage of 1/4" nuts. The pivot inserts are made of die-cast zinc. Swivel arms and connectors are made of a glass fiber reinforced plastic.

## Technical specifications:

Dimensions: 130 x 38 mm

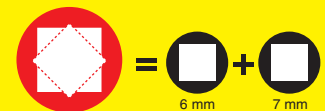
Weight: 105 g



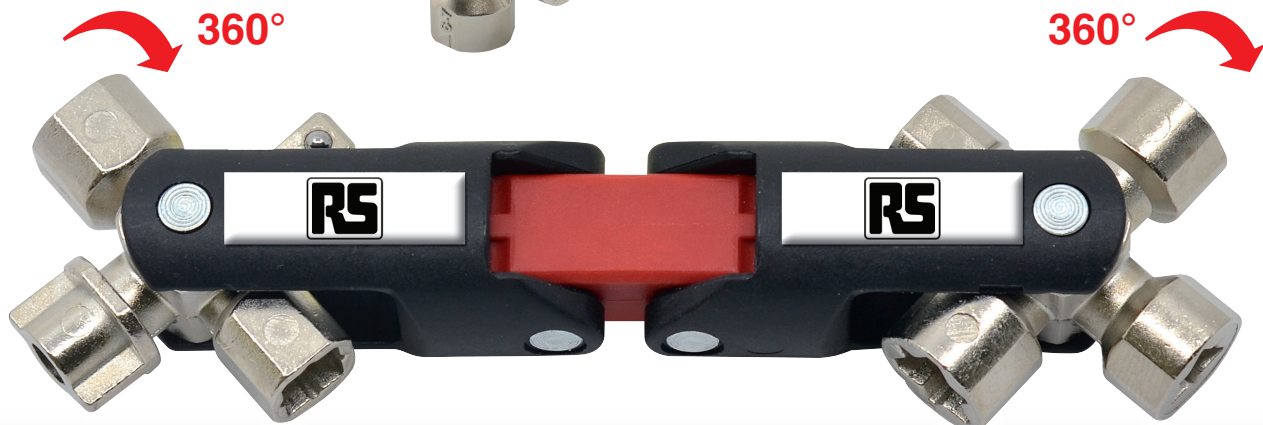
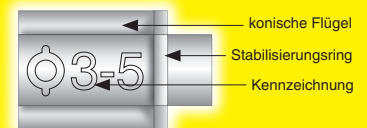
 **MADE IN GERMANY**



### • New, patented double locking system



- Higher torque as well as lower Load / notch effect of the double-bit closure by **conical shape** as well as additional **stabilization ring**



**Patented!**

