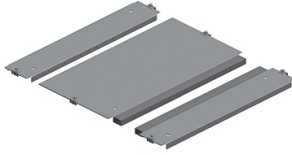


Product datasheet

Specifications



"One entry cable gland plate,
PanelSeT SFN, PanelSet SF, for
electrical enclosure W600
D1200mm, fixed by clips"

Local distributor code:
398247258

NSYEC6121

EAN Code: 3606480064128

Main

Range	PanelSeT
Product or component type	Cable gland plate
Accessory / separate part category	Cable management accessory
Range compatibility	PanelSeT SF
Mounting location	Enclosure bottom
Cable gland type	Standard
Cable entry	1 entry
Device composition	fixing elements 1 plate self extinguishing polyurethane adhesive gasket with cross-section of 15 x 25 mm
Quantity per set	Set of 1
Material	Galvanised steel

Complementary

Height	22 mm
Width	Nominal: 600 mm Useful: 416 mm Real: 540 mm
Depth	Nominal : 1200 mm
Thickness	1.5 mm

Packing Units

Unit Type of Package 1	PCE
Number of Units in Package 1	1
Package 1 Height	3.000 cm
Package 1 Width	45.000 cm
Package 1 Length	54.000 cm
Package 1 Weight	6.696 kg
Unit Type of Package 2	PAL
Number of Units in Package 2	4
Package 2 Height	29.000 cm
Package 2 Width	45.000 cm
Package 2 Length	120.000 cm

Package 2 Weight 26.784 kg

Logistical informations

Country of origin FR

Contractual warranty

Warranty (in months) 18

Environmental Data

Schneider Electric aims to achieve Net Zero status by 2050 through supply chain partnerships, lower impact materials, and circularity via our ongoing "Use Better, Use Longer, Use Again" campaign to extend product lifetimes and recyclability.

[Environmental Data explained >](#)

[How we assess product sustainability >](#)

Environmental footprint

[Environmental Disclosure](#)

[Product Environmental Profile](#)

Use Better

Materials and Substances

Packaging made with recycled cardboard

No

Packaging without single use plastic

No

[EU RoHS Directive](#)

Pro-active compliance (Product out of EU RoHS legal scope)

SCIP Number

52da316e-d4e1-4114-85c0-32a03b2934fd

REACH Regulation

[REACH Declaration](#)

Use Again

Repack and remanufacture

End of life manual availability

No need of specific recycling operations

Take-back

No