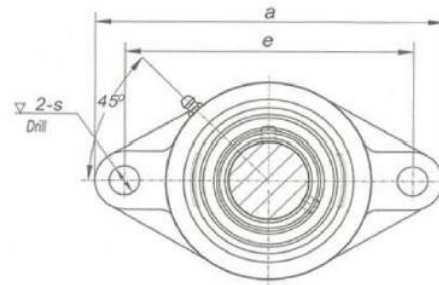
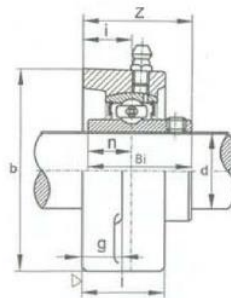


2 Bolt Flange Bearing unit – Metric



| RS Article no. | Bearing unit No. | Shaft Dia. | Dimension (mm) | | | | | | | | | | Bolt used | Bearing No. | Housing No. | Weight (kg) |
|----------------|------------------|------------|----------------|-----|----|----|------|----|-----|------|------|------|-----------|-------------|-------------|-------------|
| | | d (mm) | a | e | i | g | l | s | b | z | Bi | n | (mm) | | | |
| 7508851 | UCFL201 | 12 | 113 | 90 | 15 | 12 | 25.5 | 12 | 60 | 33.3 | 31.0 | 12.7 | M10 | UC 201 | FL 201 | 0.49 |
| 7508860 | UCFL202 | 15 | 113 | 90 | 15 | 12 | 25.5 | 12 | 60 | 33.3 | 31.0 | 12.7 | M10 | UC 202 | FL 202 | 0.49 |
| 7508863 | UCFL203 | 17 | 113 | 90 | 15 | 12 | 25.5 | 12 | 60 | 33.3 | 31.0 | 12.7 | M10 | UC 203 | FL 203 | 0.49 |
| 7508867 | UCFL204 | 20 | 113 | 90 | 15 | 12 | 25.5 | 12 | 60 | 33.3 | 31.0 | 12.7 | M10 | UC 204 | FL 204 | 0.49 |
| 7508879 | UCFL205 | 25 | 130 | 99 | 16 | 14 | 27.0 | 16 | 68 | 35.7 | 34.0 | 14.3 | M14 | UC 205 | FL 205 | 0.63 |
| 7508873 | UCFL206 | 30 | 148 | 117 | 18 | 14 | 31.0 | 16 | 80 | 40.2 | 38.1 | 15.9 | M14 | UC 206 | FL 206 | 0.94 |
| 7508885 | UCFL207 | 35 | 161 | 130 | 19 | 16 | 34.0 | 16 | 90 | 44.4 | 42.9 | 17.5 | M14 | UC 207 | FL 207 | 1.2 |
| 7508898 | UCFL208 | 40 | 175 | 144 | 21 | 16 | 36.0 | 16 | 100 | 51.2 | 49.2 | 19.0 | M14 | UC 208 | FL 208 | 1.6 |
| 7508891 | UCFL209 | 45 | 188 | 148 | 22 | 18 | 38.0 | 19 | 108 | 52.2 | 49.2 | 19.0 | M16 | UC 209 | FL 209 | 1.9 |
| 7508895 | UCFL210 | 50 | 197 | 157 | 22 | 18 | 40.0 | 19 | 115 | 54.6 | 51.6 | 19.0 | M16 | UC 210 | FL 210 | 2.2 |
| 7508905 | UCFL211 | 55 | 224 | 184 | 25 | 20 | 43.0 | 19 | 130 | 58.4 | 55.6 | 22.2 | M16 | UC 211 | FL 211 | 3.2 |
| 7508908 | UCFL212 | 60 | 250 | 202 | 29 | 20 | 48.0 | 23 | 140 | 68.7 | 65.1 | 25.4 | M20 | UC 212 | FL 212 | 4.1 |