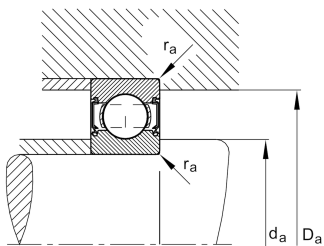
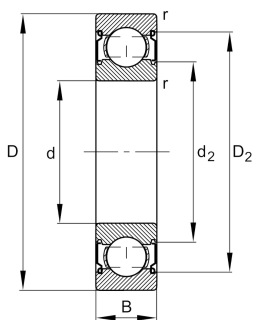


**FAG****6312-C-2Z-C4**

Deep groove ball bearing

Deep groove ball bearing 63...-C-2Z, single row, Generation C, shields, steel sheet metal cage

Technical information



Your current product variant

Changed internal design	C	GenerationC
Sealing	2Z	Non-contact shield on both sides
Cage	JN	Steel sheet metal
Tolerance class	P6	Class6 (P6), better than PN
Dimensional / heat stabilization	S0	Rings dimensional stabilized up to 150°
Lubricant	GA13	Ball bearing and insert bearing grease, standard for D>62mm
Radial internal clearance	C4 (Group 4)	Internal clearance larger than C3
Bore type	Z	Cylindrical

Main Dimensions & Performance Data

d	60 mm	Bore diameter
D	130 mm	Outside diameter
B	31 mm	Width
C _r	89,000 N	Basic dynamic load rating, radial
C _{0r}	52,000 N	Basic static load rating, radial
C _{ur}	3,600 N	Fatigue load limit, radial
n _G	6,700 1/min	Limiting speed
n _{gr}	7,400 1/min	Reference speed
≈m	1.697 kg	Weight



Mounting dimensions

$d_{a\ min}$	72 mm	Minimum diameter shaft shoulder
$D_{a\ max}$	118 mm	Maximum diameter of housing shoulder
$r_{a\ max}$	2.1 mm	Maximum fillet radius

Dimensions

r_{\min}	2.1 mm	Minimum chamfer dimension
D_1	109.02 mm	Shoulder diameter outer ring
D_2	112.14 mm	Caliber diameter outer ring
d_1	81.7 mm	Shoulder diameter inner ring
d_2	79.58 mm	Caliber diameter inner ring

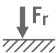





Temperature range

T_{\min}	-20 °C	Operating temperature min.
T_{\max}	120 °C	Operating temperature max.

Calculation factors

f_0	13.2	Calculation factor
-------	------	--------------------

Characteristics

	Radial load
	Axial load in one direction
	Axial load in two directions
	Lifetime lubrication, freedom from maintenance
	Grease Lubrication
	Sealed on both sides