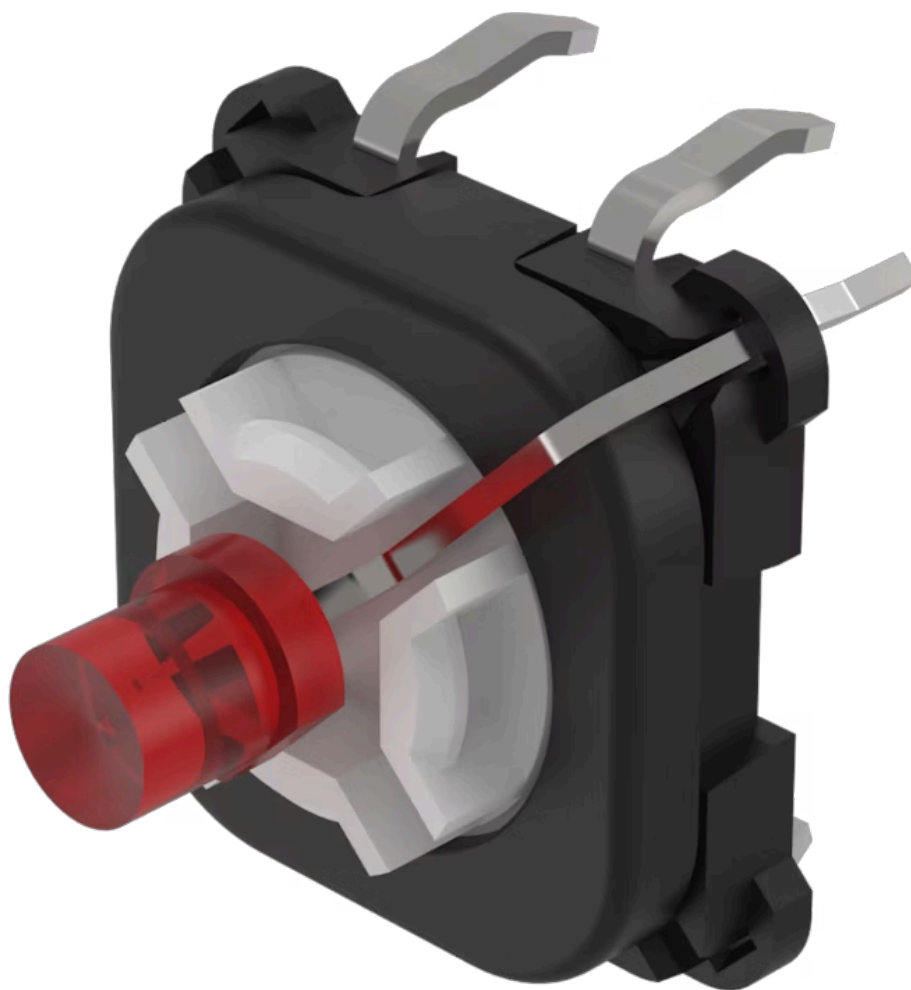


Switching element

70-220.2S

Distribution by
Rs-online



<https://rs-online.eao.com/p/70-220.2S>

Your product:



70-220.2S

Switching element

OPERATING-/INDICATION PART

Illumination colour: Red

ELECTRICAL CHARACTERISTICS

Contacts: 1 NO

Switching rating: 42 V DC @ 0.1 A

Lumi. Intensity: 160 mcd

MECHANICAL CHARACTERISTIC

Terminal: PCB terminal

Contact material: Gold

Switching action: Momentary

Switching system: Short-travel element

Weight: 0.001 kg

CERTIFICATE

REACH: REACH compliant

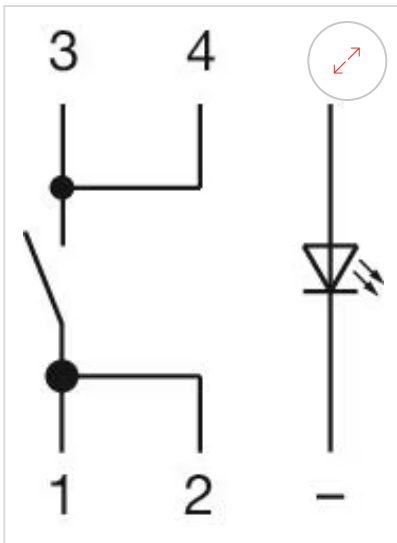
RoHS: RoHS compliant

OTHER

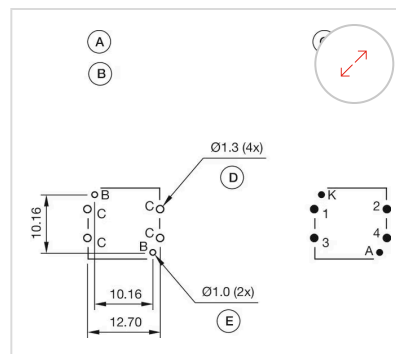
Short Description: Switching element, Short-travel element, 42 V DC @ 0.1 A, Gold, 1 NO, PCB terminal

Hints: The customer has to decide what series resistor shall be used to the LED

Wiring diagrams:



Component layouts:



A = Switching element with illumination
 B = Single LED
 C = Drilling plan (component side)
 D = Hole for switching element, pad max.
 Ø 2.5 mm
 E = Hole for LED

Dimension drawings:

