

Product Information



468SFTP160P63

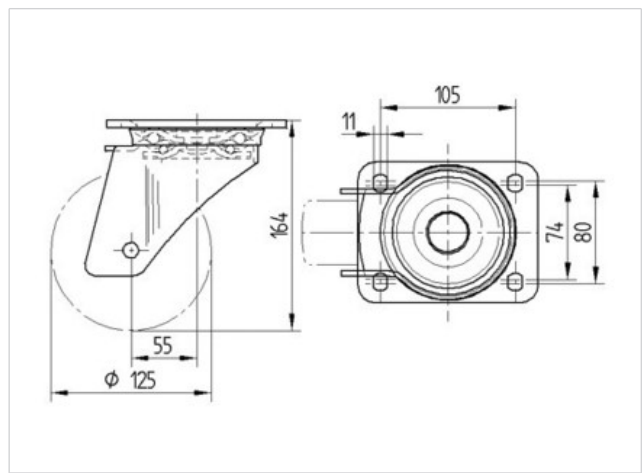
EAN 4031582416893

Swivel castor with automatic directional stability 180°, housing made of very heavy pressed steel, reinforced, bright zinc plated, blue passivated, sealed swivel double ball bearing, reinforced and heat-treated ball covers, riveted king pin, dust ring with integrated grease nipple, wheel axle with nut, plate fitting.

Wheel centre made of cast iron, Tread: Polyurethane, casted, precision ball bearing



| Technical Data | |
|------------------------|----------------|
| Wheel diameter | 160 mm |
| Width of Tread | 50 mm |
| Size of Plate | 137 x 105 mm |
| Plate hole centres | 105 x 80/75 mm |
| Plate hole | 11 mm |
| Offset | 55 mm |
| Swivel Interference | 270 mm |
| Overall height | 200 mm |
| Temperature | - 20 / + 60 °C |
| Standard | EN 12532 |
| Weight | 4.74 kg |
| Swivel Radius | 135 mm |
| Hardness of tread | Shore A 92 |
| Load capacity | 800 kg |
| Load capacity (static) | 1600 kg |



| | | | | | |
|----------------------|---|---|---|---|---|
| Roll performance | + | + | + | + | + |
| Movement noise | + | + | + | + | + |
| Attrition | + | + | + | + | + |
| Corrosion resistance | + | + | + | + | + |



468SFTP160P63

EAN 4031582416893

