

FEATURES

- Made up of durable, hardwearing polyamide non-chip materials
- Concealed Fixings
- Professional, matt black finish
- 37 x 50 x 25 mm dimensions
- The fixing centers are 120 mm apart
- Easy to clean and maintain
- Brass threaded inserts for fixing with screws from below

RS PRO Matte Black Plastic Concealed Fixings Drawer Handle, 137mm

RS Stock No.: 456-563



RS Professionally Approved Products bring to you professional quality parts across all product categories. Our product range has been tested by engineers and provides a comparable quality to the leading brands without paying a premium price.

Product Description

Our own brand, RS Pro reinforced nylon drawer handles are also comprised of fiberglass and feature threaded brass inserts. Our drawer handles are pieces of door hardware that are commonly attached to the outside of a drawer, cabinet or cupboard - this is to allow a user to easily open or pull and close the door or drawer to access the contents inside.

General Specifications

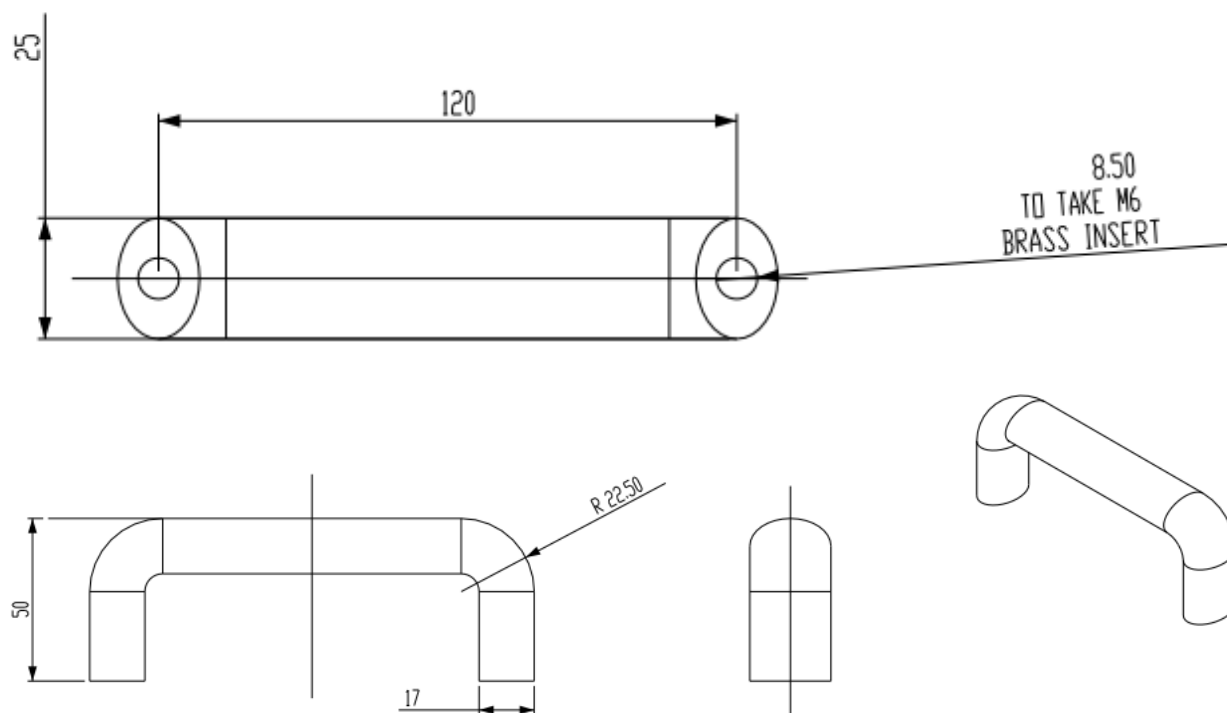
Material	Plastic
Finish	Matte
Concealed Fixings	Yes
Colour	Black
Insert Material	Brass
Application	Drawer handles can be used on both cabinet draws and cupboard doors

Mechanical Specifications

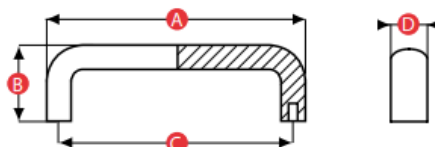
Length	137mm
Height	50mm
Width	25mm
Fixing Centres	120mm
Thread Type	M6
Weight	86.5g

Approvals

Compliance/Certifications	2011/65/EU and 2015/863
----------------------------------	-------------------------



Bridge Handle Model 07 - Nylon - Concealed



PATTERN	PART NO.	A	B	C	D	THREAD SIZE	WEIGHT (g)
65094	456551	107	40.5	94	20	M5	42.9
65117	456557	134	50	117	25	M6	84.5
65120	456563	137	50	120	25	M6	86.5
65132	456529	148	50	132	25	M6	92.5
65150	456513	168	58	150	29	M8	128.1
65179	456523	197	58	179	29	M8	286.0

Material: 15% glass filled nylon (PA6)

Insert Material: Brass

Standard Colour: Black

Available colours: A wide range of RAL colours can be produced
- MOQs apply

All dimensions are in mm (unless otherwise stated) and are approximate. All weights are in grams and are approximate.