



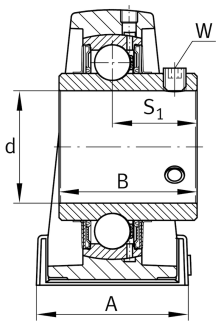
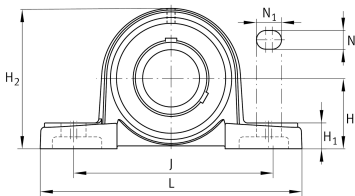
FAG

UCP217

Plummer block housing unit

Plummer block housing units UCP, cast iron housing, with long base, radial insert ball bearing with grub screws in inner ring, RSR seals

Technical information



Your current product variant

Material	GG	Grey cast iron
Housing clearance	J7	Normal swivel torque

Main Dimensions & Performance Data

d	85 mm	Bore diameter
L	310 mm	Length total
H ₂	187 mm	Height
C _r	88,000 N	Basic dynamic load rating, radial
C _{0r}	64,000 N	Basic static load rating, radial
C _{ur}	3,050 N	Fatigue load limit, radial
≈m	10.2 kg	Weight

Mounting dimensions

J	247 mm	Distance fixing bore
N	25 mm	Width (slot)
N ₁	31 mm	Length (slot)



Dimensions

H	95.2 mm	Distance shaft axis
A	83 mm	Width (base)
H ₁	32 mm	Heigth (base)
B	85.7 mm	Width
S ₁	51.6 mm	Distance of raceway to locking collar
Q	M6	Connection thread for lubrication

Additional information

P217	Housing
UC217	Bearing designation

Temperature range

T _{min}	-20 °C	Operating temperature min.
T _{max}	120 °C	Operating temperature max.