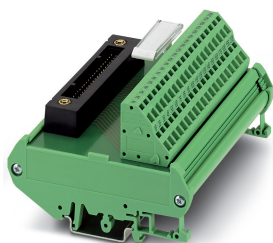


Passive module - FLKM-KS40/YCS/ZFKDS - 2314723


Please be informed that the data shown in this PDF Document is generated from our Online Catalog. Please find the complete data in the user's documentation. Our General Terms of Use for Downloads are valid (<http://phoenixcontact.com/download>)



Universal interface module with 1:1 connection between 40-pos. system connection and spring-cage terminal block connection.



Key Commercial Data

Packing unit	1 pc
GTIN	 4 046356 155007
GTIN	4046356155007

Technical data

Note

Type of note	Notes on operation
Note	No additional touch protection is required when using a SELV/PELV voltage (≤ 25 V AC or 60 V DC).
Type of note	Notes on operation
Note	At least one functional insulation against adjacent modules is complied with (in the support rail direction). If the application has stricter requirements for the insulation (basic insulation or reinforced insulation), they must be realized by applying suitable measures (e. g. partition plates).

Dimensions

Width	112 mm
Height	90 mm
Depth	60 mm

Ambient conditions

Ambient temperature (operation)	-20 °C ... 50 °C
Ambient temperature (storage/transport)	-20 °C ... 70 °C
Maximum altitude	≤ 2000 m
Degree of protection	IP00

Passive module - FLKM-KS40/YCS/ZFKDS - 2314723

Technical data

Ambient conditions

	≥ IP54 (Installation location)
--	--------------------------------

General

Max. permissible operating voltage	25 V AC
	30 V DC
Max. permissible current	1 A (per path)
Status display	No
Mounting position	any
Assembly instructions	in rows with zero spacing

Connection data

Connection name	Field level
Connection method	Spring-cage connection
Stripping length	8 mm
Screw thread	M3
Conductor cross section solid	0.2 mm ² ... 2.5 mm ²
Conductor cross section flexible	0.2 mm ² ... 1.5 mm ²
Conductor cross section AWG	24 ... 14

Connection data 2

Connection name	Controller level
Connection method	Yokogawa KS-compatible
Number of connections	1
Number of positions	40
Torque	0.5 Nm

Supported controller

Controller	YOKOGAWA CS3000 CentumVP
- suitable I/O card	AAV141
	AAV142
	AAI141
	AAI143
	AAV542
	AAI543
	AAI135
	AAI835
	AAP135
	AAT141
	AAR181
	AAB841
Controller	YOKOGAWA STARDOM
- suitable I/O card	NFAI141
	NFAI43

Passive module - FLKM-KS40/YCS/ZFKDS - 2314723

Technical data

Supported controller

	NFAI543
	NFAI135
	NFAP135
	NFAV141
	NFAV142
	NFAV542
	NFAB841
	NFAI841
	NFAI835

Standards and Regulations

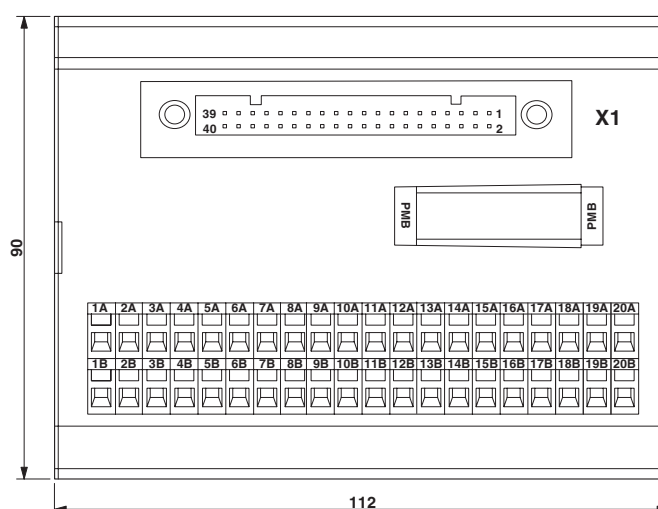
Designation	Air clearances and creepage distances
Standards/regulations	DIN EN 50178
Rated insulation voltage	50 V
Rated surge voltage	0.5 kV
Insulation	Functional insulation
Pollution degree	2
Overvoltage category	II

Environmental Product Compliance

China RoHS	Environmentally Friendly Use Period = 50 years
	For details about hazardous substances go to tab "Downloads", Category "Manufacturer's declaration"

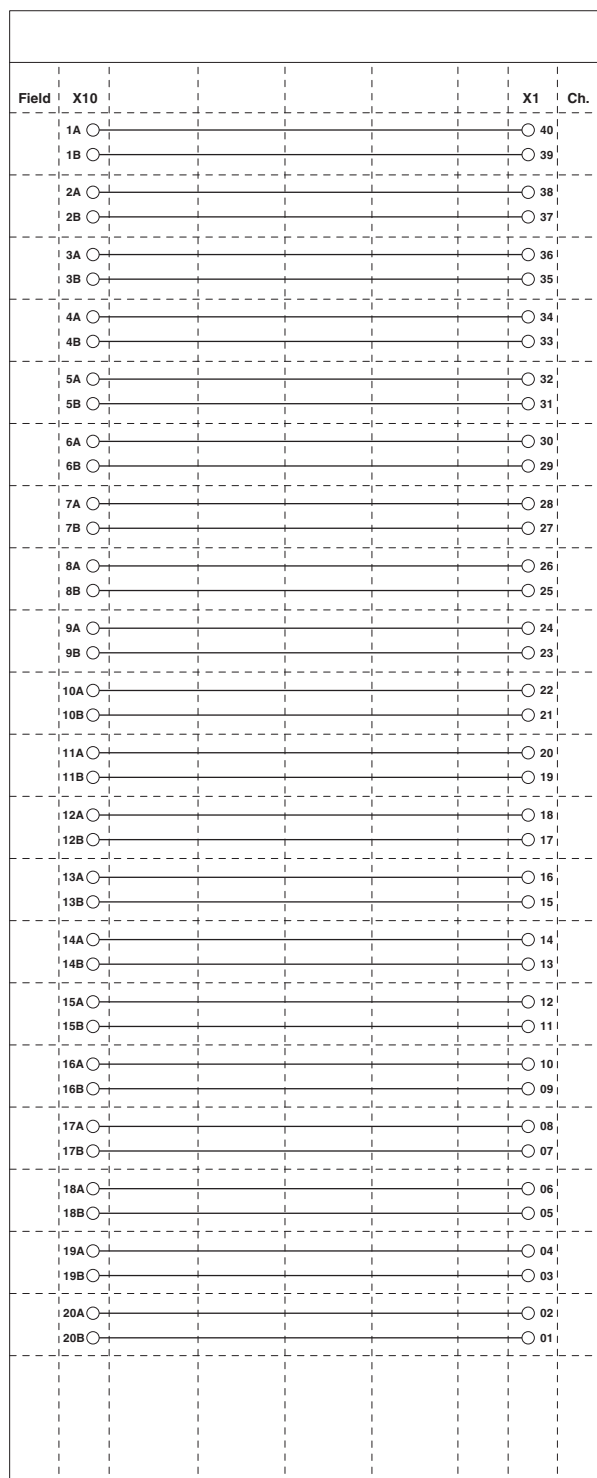
Drawings

Dimensional drawing



Passive module - FLKM-KS40/YCS/ZFKDS - 2314723

Circuit diagram



Passive module - FLKM-KS40/YCS/ZFKDS - 2314723

Classifications

eCl@ss

eCl@ss 10.0.1	27141152
eCl@ss 11.0	27141152
eCl@ss 4.0	27250300
eCl@ss 4.1	27250300
eCl@ss 5.0	27250300
eCl@ss 5.1	27250300
eCl@ss 6.0	27242600
eCl@ss 7.0	27141152
eCl@ss 9.0	27141152

ETIM

ETIM 6.0	EC002780
ETIM 7.0	EC002780

UNSPSC

UNSPSC 6.01	30211824
UNSPSC 7.0901	39121421
UNSPSC 11	39121421
UNSPSC 12.01	39121421
UNSPSC 13.2	39121432
UNSPSC 18.0	39121432
UNSPSC 19.0	39121432
UNSPSC 20.0	39121432
UNSPSC 21.0	39121432

Accessories

Accessories

Front adapter

Front adapters - FLK 40-PA/EZ-DR/KS/ 100/YUC - 2322786



Cast front adapter with attached round cable and a 40-pos. socket strip injection-molded on both sides for the connection of Yokogawa controllers. Cable length: 1.0 m

Passive module - FLKM-KS40/YCS/ZFKDS - 2314723

Accessories

Front adapters - FLK 40-PA/EZ-DR/KS/ 200/YUC - 2314341



Cast front adapter with attached round cable and a 40-pos. socket strip injection-molded on both sides for the connection of Yokogawa controllers. Cable length: 2.0 m

Front adapters - FLK 40-PA/EZ-DR/KS/ 300/YUC - 2314354



Cast front adapter with attached round cable and a 40-pos. socket strip injection-molded on both sides for the connection of Yokogawa controllers. Cable length: 3.0 m

Front adapters - FLK 40-PA/EZ-DR/KS/ 400/YUC - 2314367



Cast front adapter with attached round cable and a 40-pos. socket strip injection-molded on both sides for the connection of Yokogawa controllers. Cable length: 4.0 m

Front adapters - FLK 40-PA/EZ-DR/KS/ 500/YUC - 2321570



Cast front adapter with attached round cable and a 40-pos. socket strip injection-molded on both sides for the connection of Yokogawa controllers. Cable length: 5.0 m

Front adapters - FLK 40-PA/EZ-DR/KS/ 600/YUC - 2314943



Cast front adapter with attached round cable and a 40-pos. socket strip injection-molded on both sides for the connection of Yokogawa controllers. Cable length: 6.0 m

Passive module - FLKM-KS40/YCS/ZFKDS - 2314723

Accessories

Front adapters - FLK 40-PA/EZ-DR/KS/ 700/YUC - 2321583



Cast front adapter with attached round cable and a 40-pos. socket strip injection-molded on both sides for the connection of Yokogawa controllers. Cable length: 7.0 m

Front adapters - FLK 40-PA/EZ-DR/KS/ 800/YUC - 2314956



Cast front adapter with attached round cable and a 40-pos. socket strip injection-molded on both sides for the connection of Yokogawa controllers. Cable length: 8.0 m

Front adapters - FLK 40-PA/EZ-DR/KS/ 900/YUC - 2321415



Cast front adapter with attached round cable and a 40-pos. socket strip injection-molded on both sides for the connection of Yokogawa controllers. Cable length: 9.0 m

Front adapters - FLK 40-PA/EZ-DR/KS/1000/YUC - 2314370



Cast front adapter with attached round cable and a 40-pos. socket strip injection-molded on both sides for the connection of Yokogawa controllers. Cable length: 10.0 m

Front adapters - FLK 40-PA/EZ-DR/KS/1100/YUC - 2321428



Cast front adapter with attached round cable and a 40-pos. socket strip injection-molded on both sides for the connection of Yokogawa controllers. Cable length: 11.0 m

Passive module - FLKM-KS40/YCS/ZFKDS - 2314723

Accessories

Front adapters - FLK 40-PA/EZ-DR/KS/1200/YUC - 2321431



Cast front adapter with attached round cable and a 40-pos. socket strip injection-molded on both sides for the connection of Yokogawa controllers. Cable length: 12.0 m

Front adapters - FLK 40-PA/EZ-DR/KS/1300/YUC - 2321444



Cast front adapter with attached round cable and a 40-pos. socket strip injection-molded on both sides for the connection of Yokogawa controllers. Cable length: 13.0 m

Front adapters - FLK 40-PA/EZ-DR/KS/1400/YUC - 2321457



Cast front adapter with attached round cable and a 40-pos. socket strip injection-molded on both sides for the connection of Yokogawa controllers. Cable length: 14.0 m

Front adapters - FLK 40-PA/EZ-DR/KS/1500/YUC - 2314383



Cast front adapter with attached round cable and a 40-pos. socket strip injection-molded on both sides for the connection of Yokogawa controllers. Cable length: 15.0 m

Front adapters - FLK 40-PA/EZ-DR/KS/1600/YUC - 2321596



Cast front adapter with attached round cable and a 40-pos. socket strip injection-molded on both sides for the connection of Yokogawa controllers. Cable length: 16.0 m

Passive module - FLKM-KS40/YCS/ZFKDS - 2314723

Accessories

Front adapters - FLK 40-PA/EZ-DR/KS/1700/YUC - 2321606



Cast front adapter with attached round cable and a 40-pos. socket strip injection-molded on both sides for the connection of Yokogawa controllers. Cable length: 17.0 m

Front adapters - FLK 40-PA/EZ-DR/KS/1800/YUC - 2321619



Cast front adapter with attached round cable and a 40-pos. socket strip injection-molded on both sides for the connection of Yokogawa controllers. Cable length: 18.0 m

Front adapters - FLK 40-PA/EZ-DR/KS/1900/YUC - 2321622



Cast front adapter with attached round cable and a 40-pos. socket strip injection-molded on both sides for the connection of Yokogawa controllers. Cable length: 19.0 m

Front adapters - FLK 40-PA/EZ-DR/KS/2000/YUC - 2314532



Cast front adapter with attached round cable and a 40-pos. socket strip injection-molded on both sides for the connection of Yokogawa controllers. Cable length: 20.0 m

Front adapters - FLK 40-PA/EZ-DR/KS/2500/YUC - 2314545



Cast front adapter with attached round cable and a 40-pos. socket strip injection-molded on both sides for the connection of Yokogawa controllers. Cable length: 25.0 m

Passive module - FLKM-KS40/YCS/ZFKDS - 2314723

Accessories

Front adapters - FLK 40-PA/EZ-DR/KS/3000/YUC - 2314558



Cast front adapter with attached round cable and a 40-pos. socket strip injection-molded on both sides for the connection of Yokogawa controllers. Cable length: 30.0 m

Front adapters - FLK 40-PA/EZ-DR/KS/3500/YUC - 2901017



Cast front adapter with attached round cable and a 40-pos. socket strip injection-molded on both sides for the connection of Yokogawa controllers. Cable length: 35.0 m

Front adapters - FLK 40-PA/EZ-DR/KS/4000/YUC - 2901052



Cast front adapter with attached round cable and a 40-pos. socket strip injection-molded on both sides for the connection of Yokogawa controllers. Cable length: 40.0 m

Front adapters - FLK 40-PA/EZ-DR/KS/4500/YUC - 2902912



Cast front adapter with attached round cable and a 40-pos. socket strip injection-molded on both sides for the connection of Yokogawa controllers. Cable length: 45.0 m

Front adapters - FLK 40-PA/EZ-DR/HF/KS/ 100/YUC - 2904747



Cast front adapter with attached, halogen-free round cable and a 40-pos. socket strip injection-molded on both sides for the connection of Yokogawa controllers. Cable length: 1.0 m

Passive module - FLKM-KS40/YCS/ZFKDS - 2314723

Accessories

Front adapters - FLK 40-PA/EZ-DR/HF/KS/ 200/YUC - 2904748



Cast front adapter with attached, halogen-free round cable and a 40-pos. socket strip injection-molded on both sides for the connection of Yokogawa controllers. Cable length: 2.0 m

Front adapters - FLK 40-PA/EZ-DR/HF/KS/ 300/YUC - 2904749



Cast front adapter with attached, halogen-free round cable and a 40-pos. socket strip injection-molded on both sides for the connection of Yokogawa controllers. Cable length: 3.0 m

Front adapters - FLK 40-PA/EZ-DR/HF/KS/ 400/YUC - 2904750



Cast front adapter with attached, halogen-free round cable and a 40-pos. socket strip injection-molded on both sides for the connection of Yokogawa controllers. Cable length: 4.0 m

Front adapters - FLK 40-PA/EZ-DR/HF/KS/ 500/YUC - 2904645



Cast front adapter with attached, halogen-free round cable and a 40-pos. socket strip injection-molded on both sides for the connection of Yokogawa controllers. Cable length: 5.0 m

Front adapters - FLK 40-PA/EZ-DR/HF/KS/ 600/YUC - 2904751



Cast front adapter with attached, halogen-free round cable and a 40-pos. socket strip injection-molded on both sides for the connection of Yokogawa controllers. Cable length: 60.0 m

Passive module - FLKM-KS40/YCS/ZFKDS - 2314723

Accessories

Front adapters - FLK 40-PA/EZ-DR/HF/KS/ 700/YUC - 2904752



Cast front adapter with attached, halogen-free round cable and a 40-pos. socket strip injection-molded on both sides for the connection of Yokogawa controllers. Cable length: 7.0 m

Front adapters - FLK 40-PA/EZ-DR/HF/KS/ 800/YUC - 2904753



Cast front adapter with attached, halogen-free round cable and a 40-pos. socket strip injection-molded on both sides for the connection of Yokogawa controllers. Cable length: 8.0 m

Front adapters - FLK 40-PA/EZ-DR/HF/KS/ 900/YUC - 2904754



Cast front adapter with attached, halogen-free round cable and a 40-pos. socket strip injection-molded on both sides for the connection of Yokogawa controllers. Cable length: 9.0 m

Front adapters - FLK 40-PA/EZ-DR/HF/KS/1000/YUC - 2904646



Cast front adapter with attached, halogen-free round cable and a 40-pos. socket strip injection-molded on both sides for the connection of Yokogawa controllers. Cable length: 10.0 m

Front adapters - FLK 40-PA/EZ-DR/HF/KS/1500/YUC - 2904647



Cast front adapter with attached, halogen-free round cable and a 40-pos. socket strip injection-molded on both sides for the connection of Yokogawa controllers. Cable length: 15.0 m

Passive module - FLKM-KS40/YCS/ZFKDS - 2314723

Accessories

Front adapters - FLK 40-PA/EZ-DR/HF/KS/2000/YUC - 2904488



Cast front adapter with attached, halogen-free round cable and a 40-pos. socket strip injection-molded on both sides for the connection of Yokogawa controllers. Cable length: 20.0 m

Front adapters - FLK 40-PA/EZ-DR/HF/KS/2500/YUC - 2904648



Cast front adapter with attached, halogen-free round cable and a 40-pos. socket strip injection-molded on both sides for the connection of Yokogawa controllers. Cable length: 25.0 m

Front adapters - FLK 40-PA/EZ-DR/HF/KS/3000/YUC - 2904649



Cast front adapter with attached, halogen-free round cable and a 40-pos. socket strip injection-molded on both sides for the connection of Yokogawa controllers. Cable length: 30.0 m

Front adapters - FLK 40-PA/EZ-DR/HF/KS/3500/YUC - 2904650



Cast front adapter with attached, halogen-free round cable and a 40-pos. socket strip injection-molded on both sides for the connection of Yokogawa controllers. Cable length: 35.0 m

Front adapters - FLK 40-PA/EZ-DR/HF/KS/5000/YUC - 2904653



Cast front adapter with attached, halogen-free round cable and a 40-pos. socket strip injection-molded on both sides for the connection of Yokogawa controllers. Cable length: 50.0 m

Phoenix Contact 2022 © - all rights reserved
<http://www.phoenixcontact.com>

PHOENIX CONTACT GmbH & Co. KG
Flachsmarktstr. 8
32825 Blomberg
Germany
Tel. +49 5235 300
Fax +49 5235 3 41200
<http://www.phoenixcontact.com>