



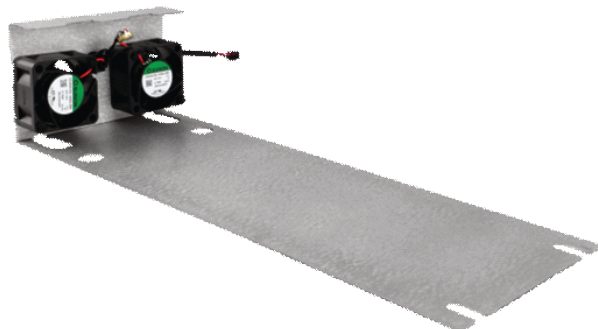
RS PRO VMX-agility

External Fan Attachment



Size 1 206-045

Size 2 206-046



RS PRO VMX-agility

External Fan Attachment Guide

RS PRO
Birchington Road,
Corby,
Northants,
NN17 9RS

Sizing guide

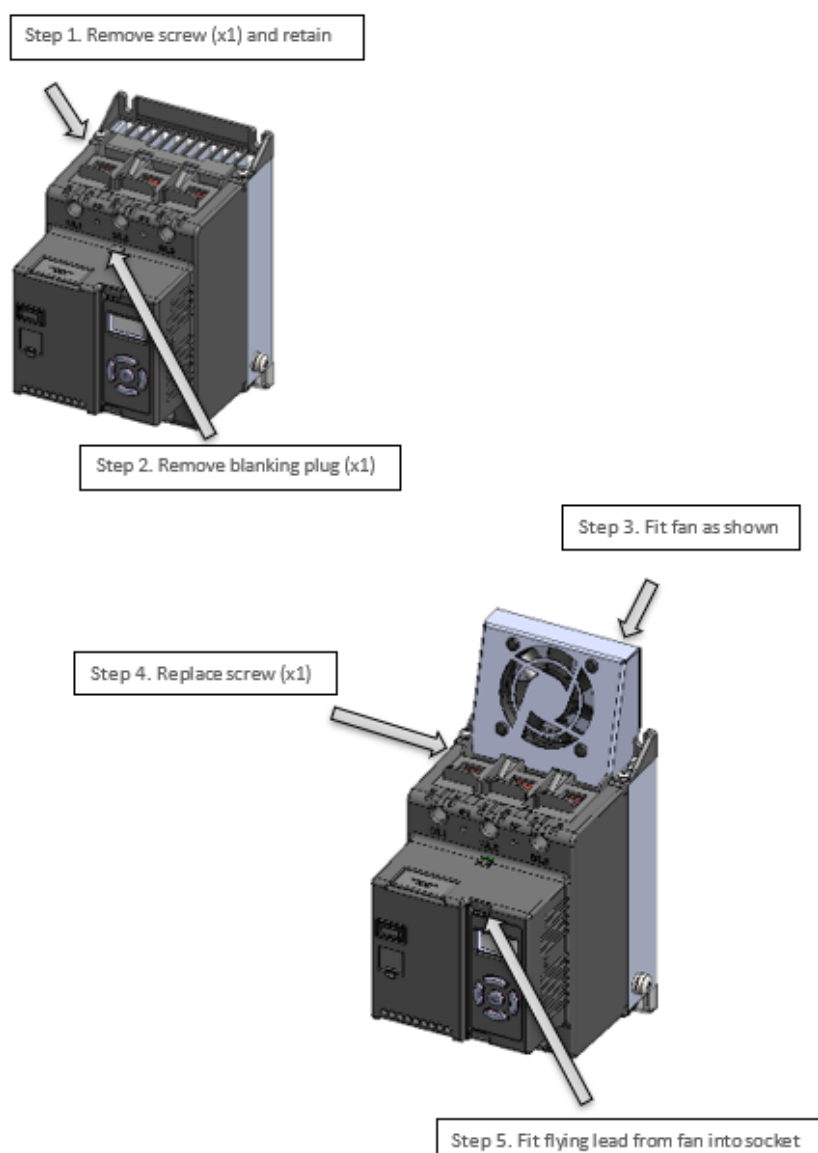
It is essential to check the RS PRO VMX-agility size and compatibility with the Auxiliary Fan.

RS PRO Stock Number	Frame Size	To be used with RS PRO VMX-agility Models	Increased number of starts
206-045	1	206-096 (17A) to 206-105 (66A)	40 starts/hr
206-046	2	206-106 (80A) to 206-108 (100A)	40 starts/hr
206-046	2	206-109 (132A)	30 starts/hr
206-046	2	206-111 (160A)	20 starts/hr
206-046	2	206-112 (190A)	10 starts/hr

Table 1

Fitting instructions

206-045 Size 1



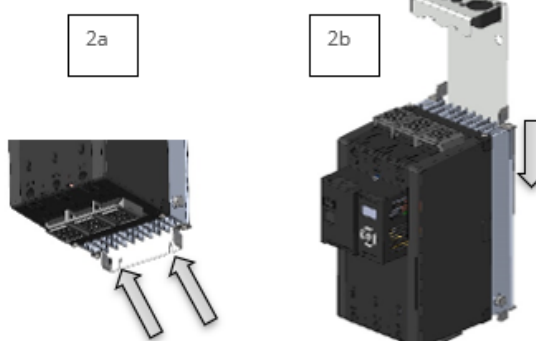
Fitting instructions

206-046 Size 2

Step 1. Position the fan assembly at the top on the RS PRO VMX-agility unit



Step 2. Loosen the two lower mounting screws (2a) and slide the fan assembly downward between the mounting bracket and the heatsink fins (2b)



Step 3. When the fan assembly is fully home and the lower plate of the assembly has engaged with the lower mounting screws, re-tighten the mounting screws fully.



Step 4. Remove the blanking plug and insert the flying lead from the fan assembly into the socket as indicated below.



NOTE The fan operates automatically during soft start or soft stop and will continue to run if the heatsink temperature is $>45^{\circ}\text{C}$. The fan stops when the heatsink temperature has fallen below 40°C .

Notes

[illegible]

Notes

[illegible]

Notes

[illegible]



RS PRO VMX-agility

External Fan Attachment