

# NBC-PP-A1PRD:10 - Port Guard Security Element



1041900

<https://www.phoenixcontact.com/in/products/1041900>

Please be informed that the data shown in this PDF document is generated from our online catalog. Please find the complete data in the user documentation. Our general terms of use for downloads are valid.



Port Guard Security Element

## Product description

Port Guard Security Element, for securing the RJ45 interface against unauthorized access, with key element

## Your advantages

- Perfect for industrial applications
- Compact angle
- Perfect for office, building, and protected industrial applications (e.g., in control cabinets)

## Commercial data

Item number	1041900
Packing unit	10 pc
Minimum order quantity	10 pc
Sales key	ABN
Product key	ABNLAZ
Catalog page	Page 375 (C-2-2019)
GTIN	4055626600321
Weight per piece (including packing)	2.65 g
Weight per piece (excluding packing)	2.6 g
Customs tariff number	85389099
Country of origin	CH

Technical data

Notes

Notes on operation	For RJ45 socket modules
--------------------	-------------------------

Product properties

Product type	Female insert
Number of slots	1

Material specifications

Material	PC
----------	----

Mounting

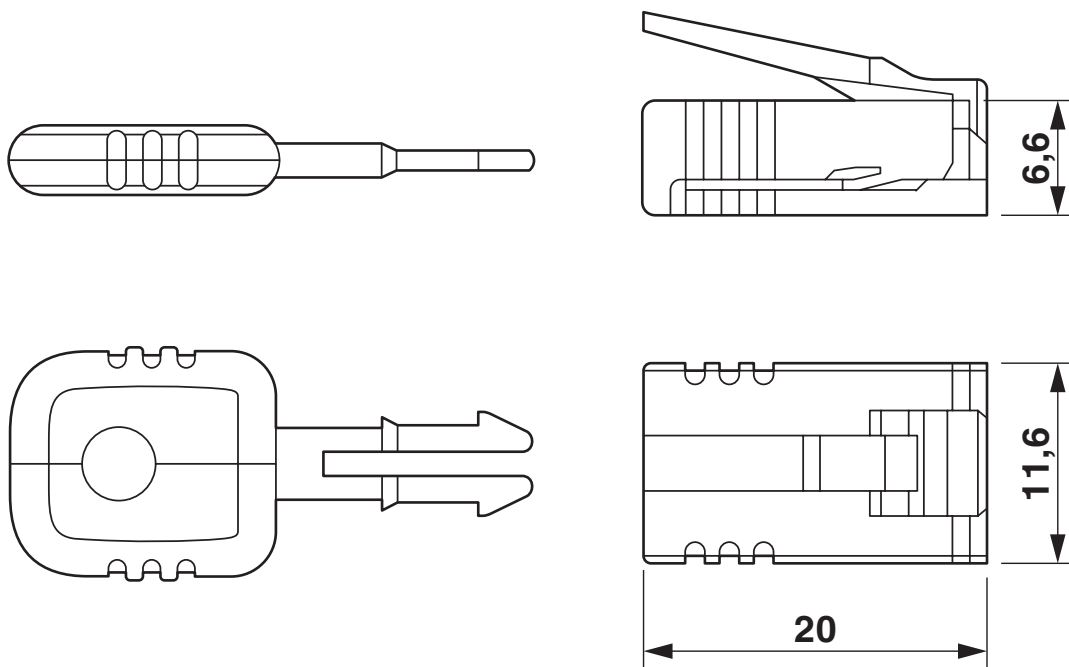
Mounting type	PCB mounting
---------------	--------------

1041900

<https://www.phoenixcontact.com/in/products/1041900>

## Drawings

Dimensional drawing





Classifications

ECLASS

ECLASS-11.0	27060308
ECLASS-12.0	27060308
ECLASS-13.0	27440390

ETIM

ETIM 9.0	EC002943
----------	----------

UNSPSC

UNSPSC 21.0	26121600
-------------	----------

Environmental product compliance

EU RoHS	
Fulfills EU RoHS substance requirements	Yes, No exemptions
China RoHS	
Environment friendly use period (EFUP)	EFUP-E
	No hazardous substances above the limits
EU REACH SVHC	
REACH candidate substance (CAS No.)	No substance above 0.1 wt%

# NBC-PP-A1PRD:10 - Port Guard Security Element



1041900

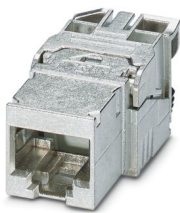
<https://www.phoenixcontact.com/in/products/1041900>

## Accessories

### CUC-I-J1ZNI-S/R4IDC8 - RJ45 jack insert

1417274

<https://www.phoenixcontact.com/in/products/1417274>



RJ45 jack insert, design: RJ45, degree of protection: IP20, number of positions: 8, 10 Gbps, CAT6<sub>A</sub>, material: Metal, connection method: IDC connection, connection cross section: AWG 26- 22, cable outlet: straight, Adapter-free design, Ethernet

---

Phoenix Contact 2025 © - all rights reserved  
<https://www.phoenixcontact.com>

PHOENIX CONTACT (I) Pvt. Ltd.  
A-58/2, Okhla Industrial Area, Phase - II, New Delhi-110 020

+91.1275.71420  
[info@phoenixcontact.co.in](mailto:info@phoenixcontact.co.in)