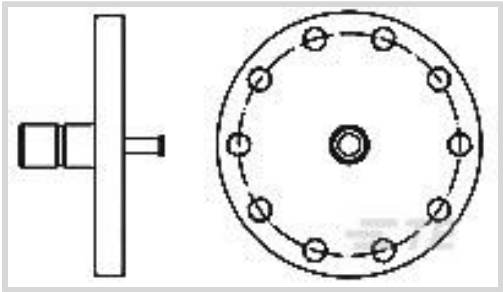




Connectors > RF Connectors > Coax Connectors



RF Interface: **SMB**
RF Connector Style: **Jack**
RF Connector Mated Outer Diameter (Approximate): **6.2 mm [.243 in]**
Impedance: **50 Ω**
RF Connector Coupling Mechanism: **Push-On**

Features

Product Type Features

Connector Shape	Circular
Connector Product Type	Connector Assembly
RF Interface	SMB
RF Connector Style	Jack
Connector & Contact Terminates To	Printed Circuit Board

Configuration Features

PCB Mount Orientation	Vertical
Number of Positions	1
Number of Coaxial Contacts	1

Electrical Characteristics

Impedance	50 Ω
-----------	------

Body Features

Body Material	Brass
Body Material Finish	Plated
Body Plating Material	Gold

Contact Features

RF Connector Center Contact Underplating Material	Copper, Nickel
RF Connector Center Contact Plating Material	Gold (Au)



RF Connector Center Contact Material	Beryllium Copper
--------------------------------------	------------------

Termination Features

Termination Method to PCB	Through Hole - Solder
Termination Post & Tail Length	3.2 mm[.125 in]

Mechanical Attachment

RF Connector Coupling Mechanism	Push-On
Connector Mounting Type	Board Mount
RF Contact Captivation Method	Mechanical

Dimensions

Profile Height from PCB	8.9 mm[.35 in]
RF Connector Mated Outer Diameter (Approximate)	6.2 mm[.243 in]

Usage Conditions

Operating Temperature Range	-65 – 165 °C[-85 – 329 °F]
-----------------------------	----------------------------

Operation/Application

Operating Frequency	5 GHz
---------------------	-------

Packaging Features

Packaging Method	Package
------------------	---------

Other

Grade	Mil-Type
Dielectric Material	PTFE

Product Compliance

For compliance documentation, visit the product page on [TE.com](#)>

EU RoHS Directive 2011/65/EU	Compliant with Exemptions
EU ELV Directive 2000/53/EC	Compliant with Exemptions
China RoHS 2 Directive MIIT Order No 32, 2016	Restricted Materials Above Threshold
EU REACH Regulation (EC) No. 1907/2006	Current ECHA Candidate List: JAN 2025 (247) Candidate List Declared Against: JAN 2025 (247) SVHC > Threshold: Pb (3.7% in 74018819) Article Safe Usage Statements: Do not eat, drink or smoke when using this product. Wash thoroughly after handling. Recycle if possible and dispose of the article by following all applicable governmental regulations relevant to your geographic location.



Halogen Content	Low Bromine/Chlorine - Br and Cl < 900 ppm per homogenous material. Also BFR /CFR/PVC Free
Solder Process Capability	Not applicable for solder process capability

Product Compliance Disclaimer

This information is provided based on reasonable inquiry of our suppliers and represents our current actual knowledge based on the information they provided. This information is subject to change. The part numbers that TE has identified as EU RoHS compliant have a maximum concentration of 0.1% by weight in homogenous materials for lead, hexavalent chromium, mercury, PBB, PBDE, DBP, BBP, DEHP, DIBP, and 0.01% for cadmium, or qualify for an exemption to these limits as defined in the Annexes of Directive 2011/65/EU (RoHS2). Finished electrical and electronic equipment products will be CE marked as required by Directive 2011/65/EU. Components may not be CE marked. Additionally, the part numbers that TE has identified as EU ELV compliant have a maximum concentration of 0.1% by weight in homogenous materials for lead, hexavalent chromium, and mercury, and 0.01% for cadmium, or qualify for an exemption to these limits as defined in the Annexes of Directive 2000/53/EC (ELV). Regarding the REACH Regulation, the information TE provides on SVHC in articles for this part number is based on the latest European Chemicals Agency (ECHA) 'Guidance on requirements for substances in articles' posted at this URL: <https://echa.europa.eu/guidance-documents/guidance-on-reach>

Customers Also Bought

TE Part #2176403-7
3550 1R8 1%

TE Part #5273550001
TMS-SCE-3/16-2.0-9

TE Part #794954-4
4P RCPT VAL-U-LOK V2

TE Part #162927-000
55A1121-16-9/96-9CS2275

TE Part #162927-000
55A1121-16-9/96-9CS2275

TE Part #162927-000
55A1121-16-9/96-9CS2275

TE Part #623581-000
55A6359-22-4CS1999

TE Part #1616004-9
B329=RELAY

TE Part #E4100402BGM
E4100402BGM=RELAY

TE Part #YDTS24T15-19SNV001
RECP ASSY

Documents



Product Drawings

SCD,5166 5004 09,SMB

English

CAD Files

3D PDF

3D

Customer View Model

ENG_CVM_CVM_1077133-1_B.2d_dxf.zip

English

Customer View Model

ENG_CVM_CVM_1077133-1_B.3d_igs.zip

English

Customer View Model

ENG_CVM_CVM_1077133-1_B.3d_stp.zip

English

By downloading the CAD file I accept and agree to the [Terms and Conditions](#) of use.