



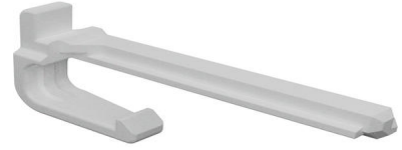
**Part Number :** [5601250600](#)

**Product Description :** DuraClik Wire-to-Board Independent Secondary Lock (ISL) Retainer, 6 Circuits, Gray

**Series Number :** 560125

**Status :** Active

**Product Category :** Connector Accessories



---

## Documents & Resources

### Drawings

[5601250600\\_sd.pdf](#)

3D Models and Design Files

[5601250600\\_stp.zip](#)

### Specifications

[AS-560123-001-001.pdf](#)

[PS-560123-001-001.pdf \(Tin Plating\)](#)


[PS-560123-003-001.pdf \(Tin Plating\)](#)

[5601240131-000.pdf \(Gold Plating\)](#)

---

## Product Environment Compliance

### Compliance

GADSL/IMDS	Compliant
China RoHS	 per SJ/T 11365-2006
EU ELV	Compliant per 2000/53/EC
Low-Halogen Status	Not Low-Halogen per IEC 61249-2-21
REACH SVHC	Not Contained per D(2024)7663-DC (21 Jan 2025)
EU RoHS	Compliant per EU 2015/863

### Compliance Statements

- EU RoHS
- REACH SVHC

- Low-Halogen

#### Industry Documents

- IPC 1752A Class C
- IPC 1752A Class D
- Molex Product Compliance Declaration
- IEC-62474
- chemSHERPA (xml)

#### Substances of Interest

- PFAS

#### EU RoHS Certificate of Compliance

#### Additional Product Compliance Information

## Part Details

### General

Status	Active
Category	Connector Accessories
Series	560125
Description	DuraClik Wire-to-Board Independent Secondary Lock (ISL) Retainer, 6 Circuits, Gray
Application	Automotive
Component Type	Independent Secondary Lock
Product Name	DuraClik
UPC	889056288286

### Physical

Circuits (Loaded)	6
Circuits (maximum)	6
Color - Resin	Gray
Lock to Mating Part	Yes
Material - Resin	PBT
Net Weight	0.072/g
Number of Rows	1
Packaging Type	Bag
Polarized to Mating Part	Yes
Temperature Range - Operating	-40° to +130°C

## Mates With / Use With

### Use with Part(s)

Description	Part Number
DuraClik ISL Wire-to-Board Receptacle Housing, Single Row, White, 6 Circuits	<u>5601230600</u>
DuraClik ISL Wire-to-Board Receptacle Housing, Single Row, Black, 6 Circuits	<u>5601230601</u>
DuraClik ISL Wire-to-Board Receptacle Housing, Single Row, Red, 6 Circuits	<u>5601230602</u>
DuraClik ISL Wire-to-Board Receptacle Housing, Single Row, Blue, 6 Circuits	<u>5601230604</u>