

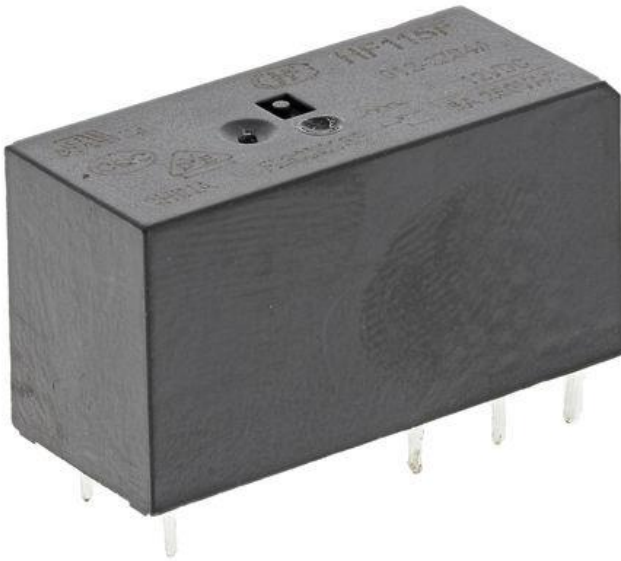


ENGLISH

Datasheet

Stock No: 476-753

RS Pro DPDT PCB Mount Non-Latching Relay Through Hole, 12V dc



Product Details

Low Profile Relays

Low profile: 15.7mm max height

8 and 16A versions have 5mm pinning, 12A has 3.5mm pinning

5kV dielectric strength (between coil and contacts)

Surge voltage up to 10kV (between coil and contacts)

Wash tight

Creepage distance 10mm

Conforms to VDE 0435/ 0631/ 0700

Approvals

UL (File no. E134517), VDE (File no. 116934), CQC (File no. CQC02001001951)

Standards

IEC 60335-1



ENGLISH

Specifications:

Coil Voltage	12V dc
Contact Configuration	DPDT
Mounting Type	PCB
Terminal Type	Through Hole
Coil Resistance	360 Ω
Application	Power
Length	29mm
Depth	12.7mm
Height	15.7mm
Dimensions	29 x 12.7 x 15.7mm
Maximum Operating Temperature	+85°C
Maximum Switching Power AC	2 kVA
Minimum Operating Temperature	-40°C
Contact Material	Silver Tin Oxide
Operating Temperature Range	-40 → +85°C