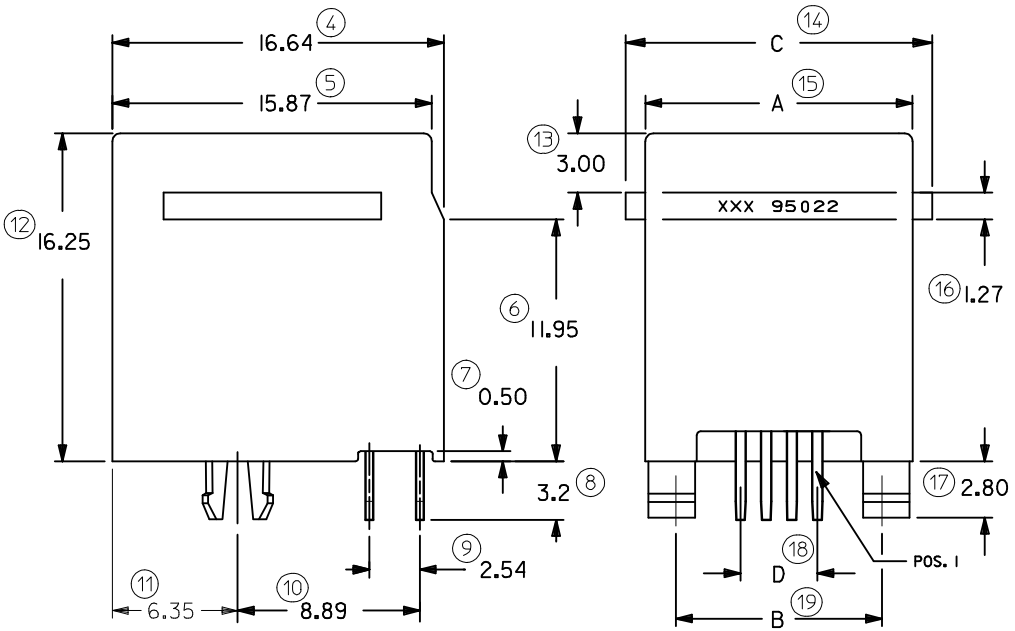
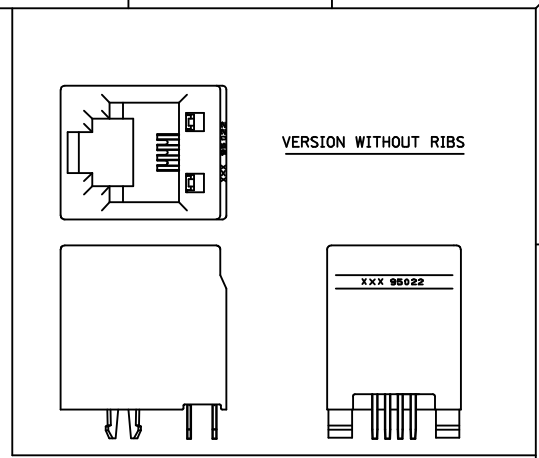
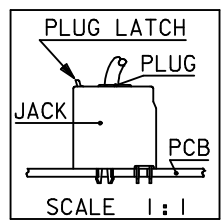
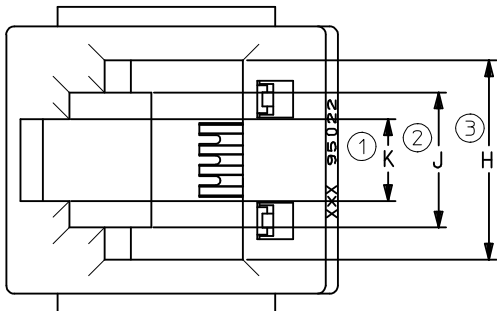


10 9 8 7 6 5 4 3 2 1

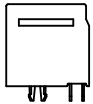


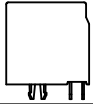
NOTES :

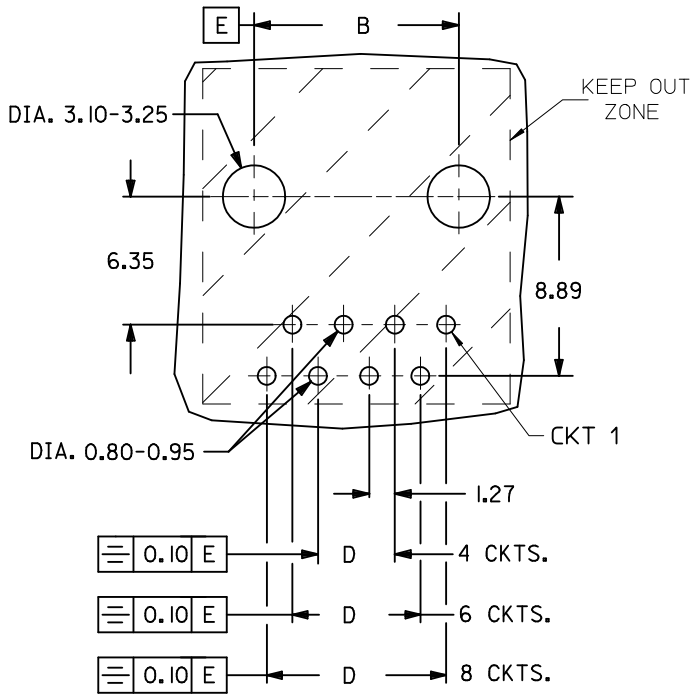
- 1- MATERIAL:
 - HOUSING: LCP FIBER GLASS FILLED 94-V-0 COLOR BLACK.
 - TERMINAL: COPPER ALLOY PLATED WITH:
 - BASE FINISH: NICKEL
 - CONTACT SURFACE FINISH: GOLD
 - OR
 - GOLD FLASH OVER PALLADIUM NICKEL
 - EXCEEDS PRODUCT REQUIREMENTS BASED ON PS-95522-002
 - 2- PC BOARD THICKNESS : 1.57
 - 3- JACK FOR MATING WITH IEC 60603-7 AND TIA-1096-A PLUGS 90075 MOLEX SERIES .
 - 4- PRODUCT SPECIFICATION PS-95522-002.
 - 5- APPLICATION SPECIFICATION AS-85513-001
 - 6- PACKAGING SPECIFICATION PK-95022. (SHT.1 TRAY PACKAGING) PK-95022. (SHT.2 TUBE PACKAGING)
 - 7- FOR ILLUSTRATION PURPOSES A 4 CIRCUIT IS SHOWN.
 - 8- MANUFACTURING I.D. CAN BE EITHER MG, MXF OR MXI.
- LAST INSPECTION NUMBER: 19

9 8 7 6 5 4 3 2 1

CORRECTED PRODUCT SPEC EC NO: IPG2013-0619 DRW:DBYRNES 2012/10/25 CHK:DMAHER 2012/11/13 APPR:STGRIFFIN 2012/11/20	DESCRIPTION G	QUALITY SYMBOLS	GENERAL TOLERANCES (UNLESS SPECIFIED)	DIMENSION STYLE	SCALE	DESIGN UNITS	THIRD ANGLE PROJECTION
		▼=0 ◻=0	mm INCH 4 PLACES ± --- ± --- 3 PLACES ± --- ± --- 2 PLACES ± 0.25 ± .014 1 PLACE ± 0.35 ± --- ANGULAR ± 2 °	MM ONLY	1:1	METRIC	
			DRAWN BY: KNOLLER CHECKED BY: FCARABET APPROVED BY: KNOLLER MATERIAL NO. SEE CHART SHT. 2	DATE: 04/08/27 DATE: 04/08/30 DATE: 04/08/30	TITLE		
			DRAFT WHERE APPLICABLE MUST REMAIN WITHIN DIMENSIONS	THIS DRAWING CONTAINS INFORMATION THAT IS PROPRIETARY TO MOLEX INCORPORATED AND SHOULD NOT BE USED WITHOUT WRITTEN PERMISSION	HIGH PROFILE TOP ENTRY JACK MOLEX INCORPORATED SD-95522-001		SHEET NO. 1 OF 2


PART NUMBERS FOR JACK WITH RIBS									
TYPE	PACKAGING	POS. 4	TOOLED	POS. 6	TOOLED	POS. 6	TOOLED	POS. 8	TOOLED
		4 CKTS.		4 CKTS.		6 CKTS.		8 CKTS.	
	TRAY	95522-2447	X	95522-2647	X	95522-2667	X	95522-2887	X
	TUBE					95522-2617 SEE NOTE 8 SH.1	X		

PART NUMBERS FOR JACK WITHOUT RIBS									
TYPE	PACKAGING	POS. 4	TOOLED	POS. 6	TOOLED	POS. 6	TOOLED	POS. 8	TOOLED
		4 CKTS.		4 CKTS.		6 CKTS.		8 CKTS.	
	TRAY	95522-2441	X	95522-2641	X	95522-2661	X	95522-2881	X
	TUBE					95522-2611	X		



MOUNTING HOLE PATTERNS
(SEE FROM COMPONENT SIDE)
ALL DIMENSIONS REF DIMENSIONS

DIM.	TYPE	POS. 4	POS. 6		POS. 8
		4 CKTS.	4 CKTS.	6 CKTS.	8 CKTS.
A		11.18	13.21	13.21	15.24
B		7.62	10.16	10.16	11.43
C	(WITH RIBS)	14.00	16.00	16.00	18.00
D		3.81	3.81	6.35	8.89
H		7.82	9.88	9.88	11.94
J		5.64	6.70	6.70	6.30
K		3.07	4.06	4.06	4.06

REMOVED PLATING OPTIONS EC NO: IPG2012-0698 DRW:DBYRNES 2012/04/02 CHKD:MSHAHAN 2012/04/17 APPR:EFOLAN 2012/06/28	QUALITY SYMBOLS ▽=0 ◻=0	GENERAL TOLERANCES (UNLESS SPECIFIED) mm INCH 4 PLACES ± --- ± --- 3 PLACES ± --- ± --- 2 PLACES ± 0.25 ± --- 1 PLACE ± 0.35 ± --- ANGULAR ± 2°	DIMENSION STYLE MM ONLY DRAWN BY: KNOLLER DATE: 04/08/27 CHECKED BY: FCARABET DATE: 04/08/30 APPROVED BY: KNOLLER DATE: 04/08/30	SCALE: 1:1 DESIGN UNITS: METRIC THIRD ANGLE PROJECTION	HIGH PROFILE TOP ENTRY JACK  MOLEX INCORPORATED MATERIAL NO. SEE CHART DOCUMENT NO. SD-95522-001 SHEET NO. 2 OF 2
	DRAFT WHERE APPLICABLE MUST REMAIN WITHIN DIMENSIONS	SIZE: A3 THIS DRAWING CONTAINS INFORMATION THAT IS PROPRIETARY TO MOLEX INCORPORATED AND SHOULD NOT BE USED WITHOUT WRITTEN PERMISSION			