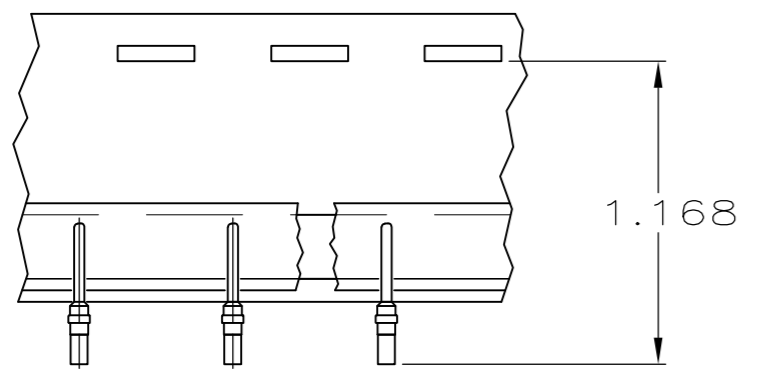
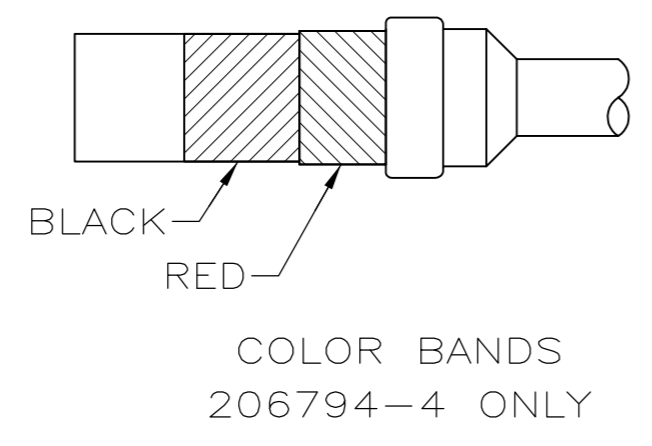
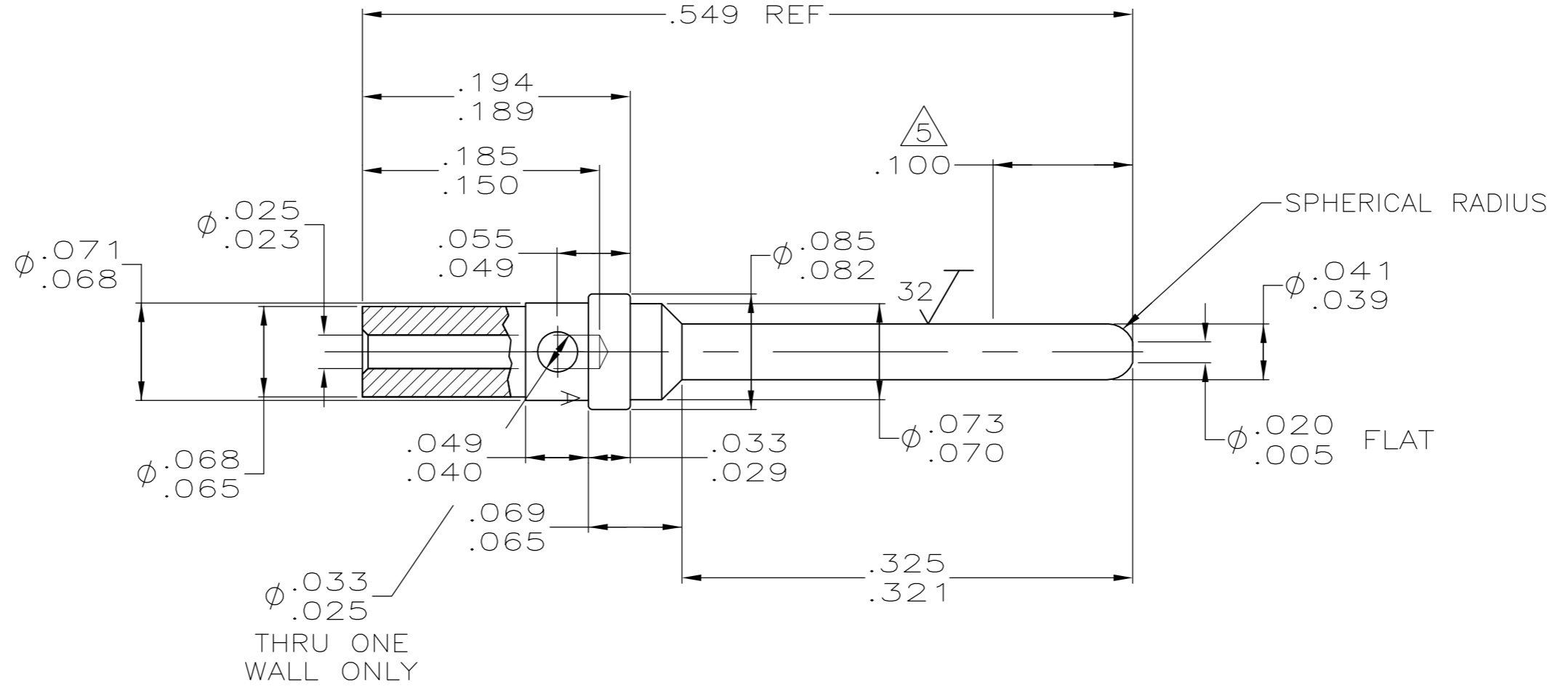


THIS DRAWING IS UNPUBLISHED. RELEASED FOR PUBLICATION
 © COPYRIGHT - By - ALL RIGHTS RESERVED.

LOC		DIST		REVISIONS			
P	LTR	DESCRIPTION		DATE	DWN	APVD	
DF	DO	G1	REVISED PER ECO-11-005030	11MAR11	RK	HMR	

1. ALL DIMENSIONS APPLY AFTER PLATING.
 2. THIS PART COMPLIES WITH SPEC. MIL-C-24308/11, EXCEPT WIRE BARREL.
 3. ALL DIAMETERS CONCENTRIC WITH EACH OTHER WITHIN .004 T.I.R.
 4. ALL SURFACES HAVE $\sqrt{63}$ FINISH OR BETTER UNLESS OTHERWISE NOTED.
- $\triangle 5$ POINT OF PLATING MEASUREMENT.
 $\triangle 6$ FINISH: PLATED GOLD PER MIL-G-45204 OVER COPPER PER MIL-C-14550.



TAPE MOUNTED
 206794-3 ONLY
 SCALE: NTS

SUPERSEDED BY 206794-3	TAPE MOUNTED	-	206794-4	206794-5
	COLOR CODED	-	206794-2	206794-4
	TAPE MOUNTED	-	206794-2	206794-3
	AS SHOWN	$\triangle 6$	COPPER ALLOY #187	206794-2
REMARKS	FINISH	MATERIAL	PART NUMBER	

THIS DRAWING IS A CONTROLLED DOCUMENT.		DWN	C.C.THOMAS	7/24/00	TE TE Connectivity		
DIMENSIONS: INCHES		CHK	R.GROSS	9-5-00			
TOLERANCES UNLESS OTHERWISE SPECIFIED:		APVD	R.GROSS	9-5-00			
0 PLC ± - 1 PLC ± - 2 PLC ± - 3 PLC ± .025 4 PLC ± - ANGLES ± 2° FINISH SEE TABLE		NAME	PIN CONTACT, SIZE 20 (FOR #26 & #28 AWG WIRE)				
MATERIAL	COPPER ALLOY NO. 187	PRODUCT SPEC	APPLICATION SPEC	SIZE	CAGE CODE	DRAWING NO	RESTRICTED TO
		WEIGHT	-	A2	00779	C=206794	-
		CUSTOMER DRAWING	SCALE	10:1	SHEET	1 of 1	REV
							G1