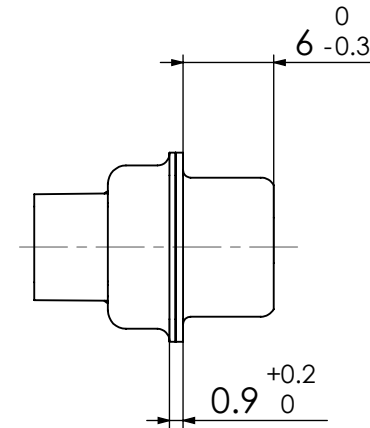
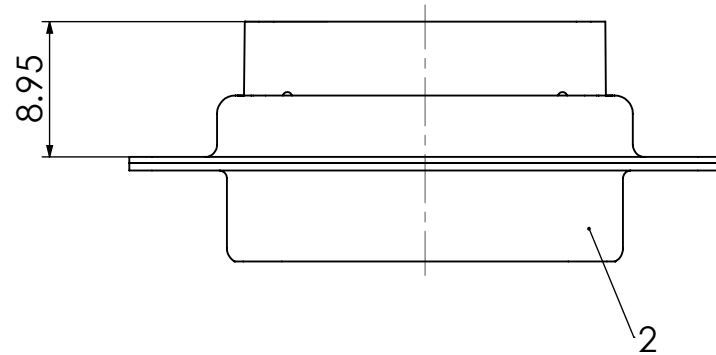
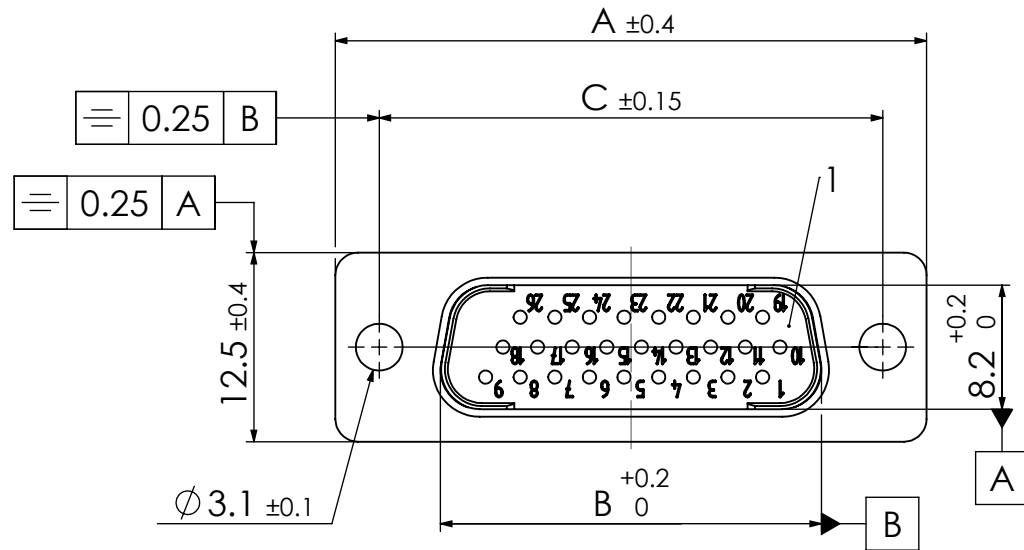


COMMENT:  
ALL RIGHTS ARE RESERVED BY US FOR THIS DRAWING. WITHOUT OUR PRIOR CONSENT,  
IT MAY NEITHER BE DUPLICATED NOR MADE AVAILABLE TO A THIRD PARTY.  
AND IT ALSO MAY NOT BE IMPROPERLY USED BY THE RECEIVER, OR A THIRD PARTY.



FLxx-xx\*<sub>1</sub>)P7-K121

e.g. FL15-26P7-K121

\*<sub>1</sub>) xx-xx No. of contacts 15-26, 25-44 or 37-62

RoHS compliant

| xx-xx * <sub>1</sub> ) | A [mm] | B [mm] | C [mm] | No. of Contacts<br>1./2./3. row |
|------------------------|--------|--------|--------|---------------------------------|
| 15-26                  | 39.1   | 25.2   | 33.3   | 9/9/8                           |
| 25-44                  | 53     | 38.9   | 47.04  | 15/15/14                        |
| 37-62                  | 69.3   | 55.3   | 63.5   | 21/21/20                        |

Crimp contacts not supplied with connector.  
Contacts must be ordered separately.

|      |            |           |  |                                    |
|------|------------|-----------|--|------------------------------------|
| 2    | 1          | Shell     | Steel  | tin plated                         |
| 1    | 1          | Insulator | Thermoplastic, UL 94V-0                          | black                              |
| No.  | St.        | Part      | Type Description/Material                        | Surface plating/Colour/Class       |
|      |            |           | Measurement without tolerance acc. to ISO 2768-m | SCALE 2:1                          |
|      |            |           | NAME / DATE Markus.Jobst 09-03-2011              | TITLE High Density Crimp Connector |
|      |            |           | CHECKED sschref 12-12-2011                       |                                    |
| 2    | 12-12-2011 | 23127     |  | DWG.NO.                            |
| 1    |            |           |  | REV. 2                             |
| REV. | DATE       | CH.-NO.   | ORIGINAL: DIN A3-DRAWING AS A FILE               | REPLACEMENT FOR: FLxx-xxP7-K121    |
|      |            |           |  | PAGES 1                            |