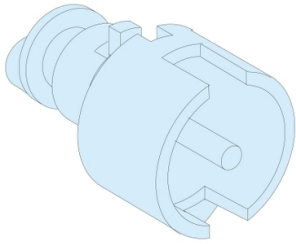


Product datasheet

Specifications



3MM DOUBLE BAR IP55HAND.INSERT

LVS09932

EAN Code: 3606481885241

Main

Range	PrismaSeT
Range of product	PrismaSeT G
Product or component type	Insert
Accessory / separate part category	Locking accessory
Range compatibility	PrismaSeT PrismaSeT G door

Complementary

Product compatibility	IP55 enclosure
Mounting support	Handle
installation description	Floor-standing enclosure Wall-mounted enclosure
Lock type	3 mm double bar insert
Quantity per set	Set of 1
Net weight	0.065 kg
Colour	Natural

Packing Units

Unit Type of Package 1	PCE
Number of Units in Package 1	1
Package 1 Height	1.5 cm
Package 1 Width	1.5 cm
Package 1 Length	3.0 cm
Package 1 Weight	21.0 g
Unit Type of Package 2	S02
Number of Units in Package 2	50
Package 2 Height	15.0 cm
Package 2 Width	30.0 cm
Package 2 Length	40.0 cm
Package 2 Weight	1.303 kg

Contractual warranty

Warranty (in months)	18
----------------------	----

Environmental Data

Schneider Electric aims to achieve Net Zero status by 2050 through supply chain partnerships, lower impact materials, and circularity via our ongoing “Use Better, Use Longer, Use Again” campaign to extend product lifetimes and recyclability.

[Environmental Data explained >](#)

[How we assess product sustainability >](#)

Environmental footprint

[Environmental Disclosure](#)

[Product Environmental Profile](#)

Use Better

Materials and Substances

Packaging made with recycled cardboard

Yes

Packaging without single use plastic

No

[EU RoHS Directive](#)

Compliant with Exemptions

REACH Regulation

[REACH Declaration](#)

Halogen-free status

Halogen free plastic parts product

PVC free

Yes

Silicone-free

Yes

Use Longer

Lifetime extension

Repair

No

Use Again

Repack and remanufacture

End of life manual availability

No need of specific recycling operations

Take-back

No