

Directional valves → Silencers

Silencers, Series SI1

► Polyethylene



00124883



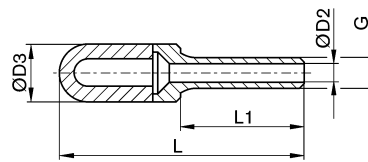
Working pressure min./max.
Ambient temperature min./max.
Medium

0 bar / 10 bar
-25 °C / +80 °C
Compressed air

Materials:
Silencers
Thread

Polyethylene
Polyethylene

Dimensions



00125171

Part No.	Port G	Qn [l/min]	Ø D2	Ø D3	L1	L	Weight [kg]	Delivery quantity [Piece]			
R412007519	Ø 4	15	2.5	7	16	32	0.002	5			
R412007899	Ø 6	30	3.5	10	20.5	45	0.002	5			
R412000591	Ø 6	30	3.5	12.5	20.5	45	-	5			
R412007520	Ø 8	45	4.8	13.5	21.5	43.5	0.002	5			
R412000593	Ø 10	70	6.9	15.5	26.5	57.5	0.004	5			
R412007715	Ø 12	-	8.4	18.5	29	82	0.007	5			