

## Features

- Rated currents up to 10A
- Fast-on (6.3\*0.8mm)
- The compact size can be applied to various situations.
- Enhanced filtering performance

## RS PRO EMI Filters

RS Stock No.: 286-7297



RS PRO is the own brand of RS. The RS PRO Seal of Approval is your assurance of professional quality, a guarantee that every part is rigorously tested, inspected, and audited against demanding standards. Making RS PRO the Smart Choice for our customers.

## Product Description

*High performance single phase chassis mount EMI filter Applications:*

- *Electrical and electronic equipment*
- *Medical equipment*
- *Office automation equipment*
- *New energy equipment ,Communication equipment;*

## General Specifications

The compact size can be applied to various situations.

This filter is also available as two-stage filters in noisy environment.

## Electrical Specifications

*Size( Length\*Width\*Height) 92\*57\*45mm*

*Weight* 0.5kgs

*Mounting Hole Spacing* 104mm

## Mechanical Specifications

*Rated Voltage Max.* 115/250VAC

<i>Rated currents</i>	10A
<i>Operating frequency</i>	50/60Hz
<i>Hipot Rating</i>	Line to Ground 2250VDC Line to Line 400VDC
<i>Temperature range</i>	-25°C~+85°C
<i>Leakage current</i>	0.5mA/1.0mA
<i>Inductance</i>	L1/2: 2x8.0mH ;
<i>Capacitance</i>	Cx1/2/3: 0.47uF ; Cy1:3300pF*2; Cy2:1000pF*2
<i>Resistance</i>	R:330K ohm ; MOV;

## Protection Category

*IP Rating* IP40

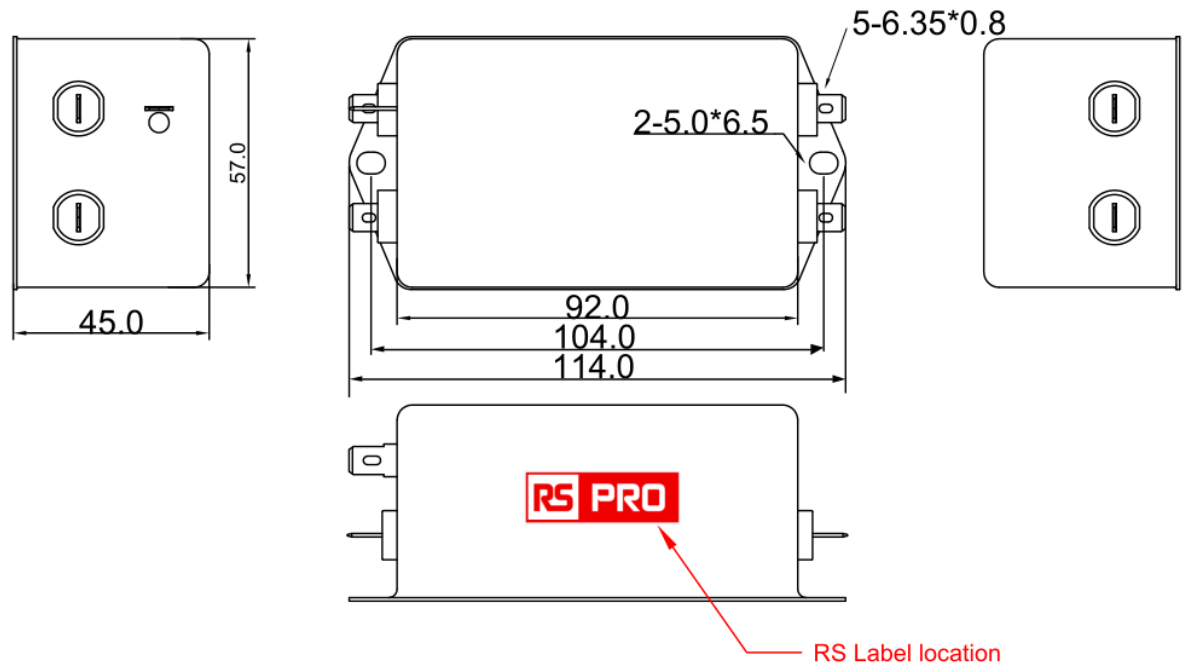
## Approvals

<i>Declarations</i>	TUV CQC CE UKCA REACH ROHS
<i>Safety Standard</i>	EN 60939-1:2010; EN 60939-2:2005 GB/T 15287; GB/T 15288-1994;

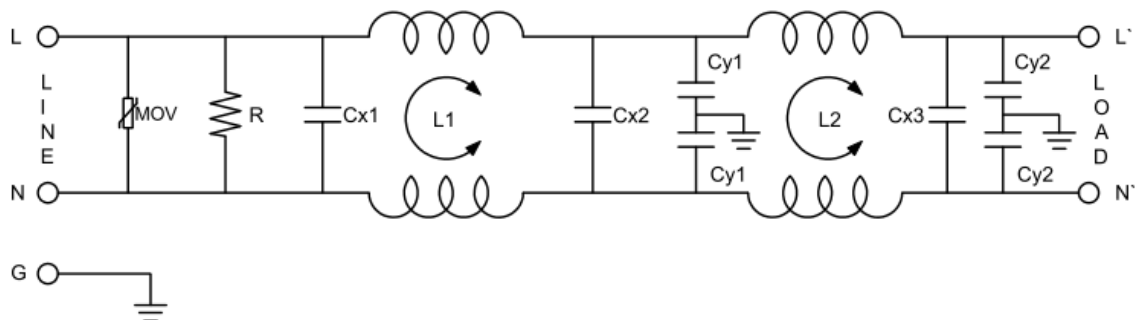
## Similar Products

Stock No.	Brand	Phase Type	Mounting	Current	Dimension
237-8727	RS PRO	Single phase	Chassis mounting	16A	92*57*45mm

## Physical Dimensions (Unit:mm)



## Electrical Schematic



## Insertion loss( IN 50ohm system according IEC/CISPR NO.17)

