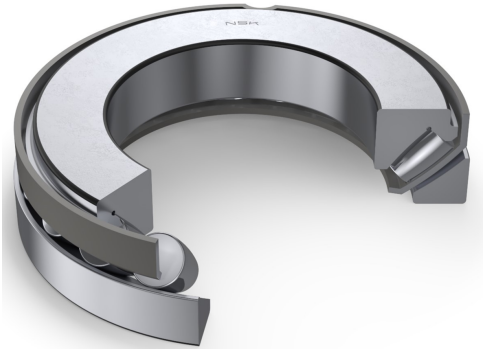




29414E

Thrust Spherical Roller Bearings



Boundary Dimensions

d	70	mm	Bore diameter
D	150	mm	Outside diameter
T,T3	48	mm	Height
r (min.)	2	mm	Chamfer dimension

Basic Load Ratings

Ca	450000	N	Basic dynamic load rating
C0a	1240000	N	Basic static load rating

Speeds

Oil (Oil-bath)	2400	min-1	Oil-bath lubrication
----------------	------	-------	----------------------

Dimensions

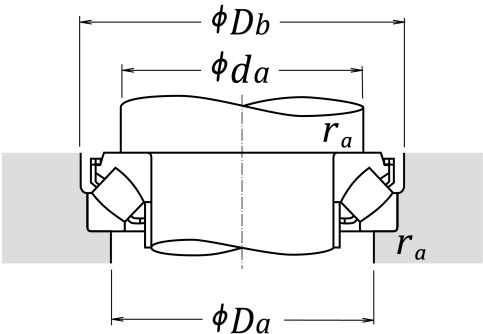
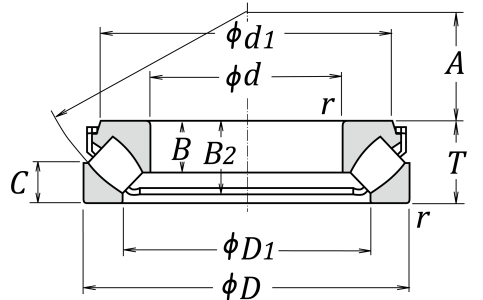
B2	43	mm	Height shaft washer + cage
d1	131.5	mm	Outside diameter of shaft washer end side face
B1	31	mm	Width shaft washer or length of shaft washer bore diameter that fits on shaft
C	24	mm	Height housing washer
A	44	mm	Distance from shaft washer end side face to pressure point
D1	102	mm	Shoulder diameter outer ring
ds1 (max.)	78	mm	Abutment diameter spacer ring
ds2 (max.)	78	mm	Abutment diameter spacer ring (E design)

Abutment and Fillet Dimensions

Da (max.)	125	mm	Diameter of housing abutment
Db (max.)	153	mm	Abutment diameter housing (E design)
ra (max.)	2	mm	Radius of shaft or housing fillet
da (min.)	105	mm	Abutment diameter spacer ring (E design)

Mass

Mass approx.	3.9	kg	Mass approx.
--------------	-----	----	--------------





PRODUCT DATASHEET

Datasheet creation date: 2025/05/28 8:02 (UTC)

