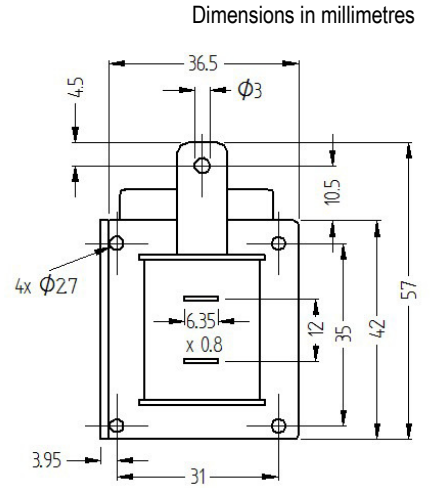
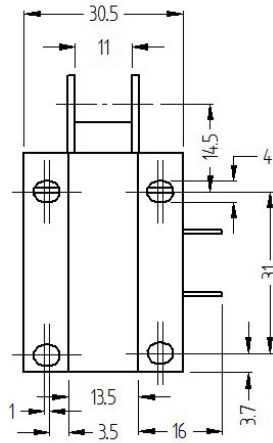
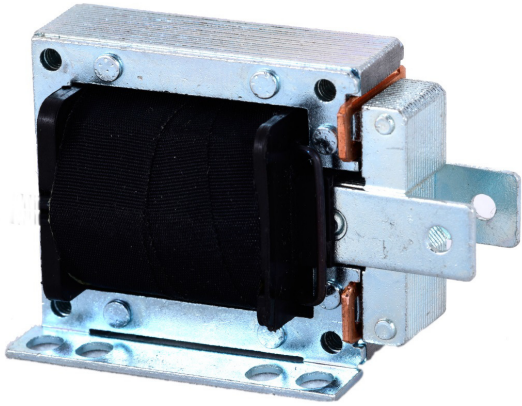


Laminated Solenoid

ST1



Axial Force (Kg) Vs. Stroke and Duty Service (ED)					
ED	Stroke (mm)				
	2	5	10	15	20
100	1.10	0.70	0.55	0.45	-
40	1.85	1.25	0.95	0.75	-
25	2.05	1.45	1.05	0.85	-
15	2.40	1.70	1.20	0.95	-
5	2.85	1.95	1.40	1.05	-

Coil Rated Current (VA) Vs. Stroke and Duty Service (ED)						
ED	Stroke (mm)					
	0	2	5	10	15	20
100	22	50	84	118	136	-
40	55	97	137	176	190	-
25	68	110	154	198	216	-
15	84	132	172	220	238	-
5	112	158	207	248	258	-

- Pull type
- Flying leads (150mm) or Faston terminals (6.3 x 0.8mm)
- Corrosion resistant plated parts
- Optional voltages and duty ratings (12-24-110-220-230-240 VAC, 50 or 60Hz)
- Total weight 190grams
- Plunger weight 50grams