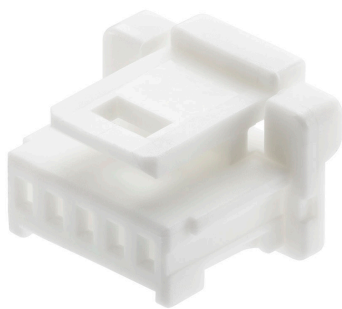




Part Number : [5019390331](#)
Product Description : 1.00mm Pitch, Pico-Clasp Low-Halogen Receptacle Crimp Housing, Single Row, Outer Positive Lock, 3 Circuits, Black
Series Number : 501939
Status : Active
Product Category : Connector Housings



Documents & Resources

Drawings
[5019390331_sd.pdf](#)

3D Models and Design Files
[5019390331.dxf](#)
[5019390331.pdf](#)
[5019390331_stp.zip](#)

Specifications
[5013300000-AS-000.pdf](#)
[5013300000-AS-001.pdf](#)
[SPK-501939-001-001.pdf](#)
[5019390000-PS-002.pdf](#)
[5019390000-PS-003.pdf](#)
[5019391000-PS-002.pdf](#)
[5019391000-PS-003.pdf](#)
[5019401001-PS-001.pdf](#)
[5019401001-PS-CHI-001.pdf](#)
[5019401001-PS-JAP-001.pdf](#)
[5019401001-PS-KOR-001.pdf](#)
[5019401001-PS-SPA-001.pdf](#)
[PS-501940-001-001.pdf](#)

Product Environment Compliance

Compliance

GADSL/IMDS	Not Relevant
China RoHS	
EU ELV	Not Relevant
Low-Halogen Status	Low-Halogen per IEC 61249-2-21

REACH SVHC	Not Contained per D(2024)7663-DC (21 Jan 2025)
EU RoHS	Compliant per EU 2015/863

Multiple Part Product Compliance Statements

- Eu RoHS
- REACH SVHC
- Low-Halogen

Multiple Part Industry Compliance Documents

- IPC 1752A Class C
- IPC 1752A Class D
- Molex Product Compliance Declaration
- IEC-62474
- chemSHERPA (xml)

EU RoHS Certificate of Compliance

Part Details

General

Status	Active
Category	Connector Housings
Series	501939
Description	1.00mm Pitch, Pico-Clasp Low-Halogen Receptacle Crimp Housing, Single Row, Outer Positive Lock, 3 Circuits, Black
Application	Signal, Wire-to-Board
Product Name	Pico-Clasp
UPC	883906943974

Agency

UL	E29179
----	--------

Physical

Circuits (maximum)	3
Color - Resin	Black
Gender	Receptacle
Glow-Wire Capable	No
Keying to Mating Part	None

Lock to Mating Part	Yes
Material - Resin	Nylon
Net Weight	42.300/mg
Number of Rows	1
Packaging Type	Bag
Panel Mount	No
Pitch - Mating Interface	1.00mm
Pitch - Termination Interface	1.00mm
Polarized to Mating Part	Yes
Stackable	No
Temperature Range - Operating	-40° to +105°C

Mates With / Use With

Mates with Part(s)

Description	Part Number
Pico-Clasp Vertical, Single Row, Surface Mount Headers	<u>203560</u>
Pico-Clasp Vertical, Single Row, Surface Mount Headers	<u>203561</u>
Pico-Clasp Vertical Single Row Headers	<u>501940</u>
Pico-Clasp Right-Angle, Single Row, Surface Mount Headers	<u>203562</u>
Pico-Clasp Right-Angle, Single Row, Surface Mount Headers	<u>203563</u>
Pico-Clasp Right-Angle Single Row Headers	<u>501953</u>
Pico-Clasp Vertical, Single Row, Surface Mount, Low-Halogen Headers	<u>208383</u>
Pico-Clasp Right-Angle, Single Row, Surface Mount, Low-Halogen Headers	<u>208385</u>

Use with Part(s)

Description	Part Number
Pico-Clasp Female Crimp Terminals	<u>501193</u>
Pico-Clasp Female Crimp Terminals	<u>501334</u>

Application Tooling

Global

Description	Part Number
Extraction Tool for Pico-Clasp Wire-to-Board Terminals, 32-28 AWG	<u>638131700</u>