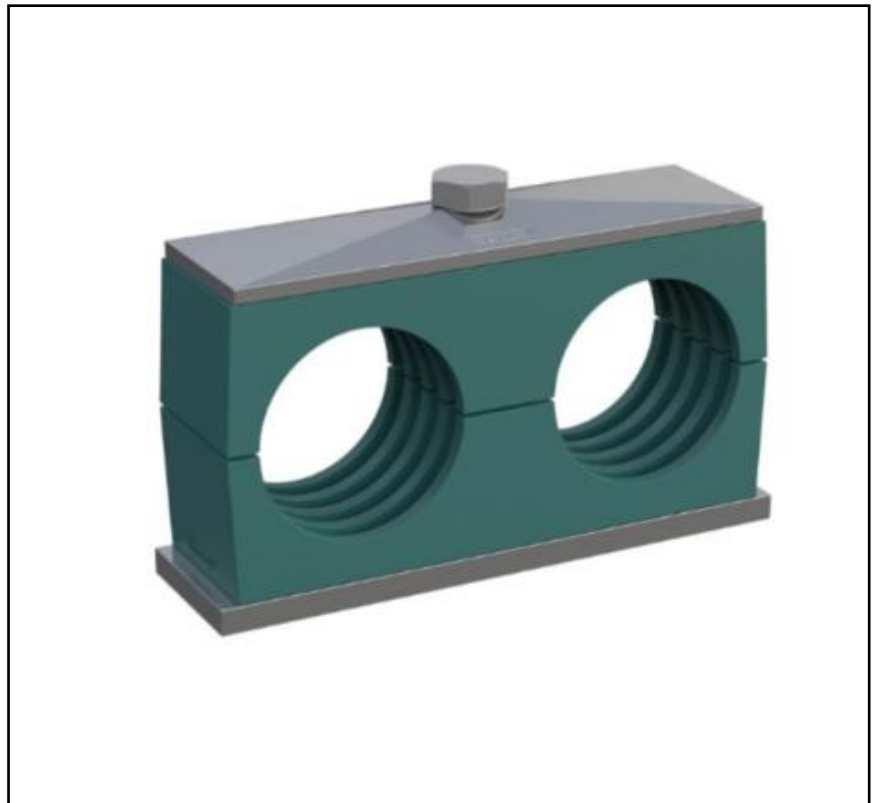


Features

- Reset capability.
- High-tensile strength
- High abrasion resistance
- Resistant to cold
- DIN 3015
- Operating temperature range - 30°C to 90°C
- Polypropylene clamp body with steel weld plate, zinc plated steel top plate and steel clamp screws

Double Tube Clamp for 20mm tube

RS Stock No.: 145-9771



RS PRO is the own brand of RS. The RS PRO Seal of Approval is your assurance of professional quality, a guarantee that every part is rigorously tested, inspected, and audited against demanding standards. Making RS PRO the Smart Choice for our customers.

Product Description

RS PRO Tube Clamps, designed to enable fixing of straight and bent, tubes and hoses. The clamp body is a square/open design with a ribbed bore enabling secure fixing while ensuring a high degree of sound deadening and vibration damping. Ideal for normal mechanical stress, they are available as a single or twin tube clamp in standard sizes for nominal mechanical requirements.

General Specifications

For Tube Outside Diameter	20mm
Number of Tubes Held	Double
Maximum Tube Outer Diameter	20mm
Body Material	PP

Mechanical Specifications

Clamp Spacing	1.2m
Maximum Operating Temperature	+90°C
Minimum Operating Temperature	-30°C