



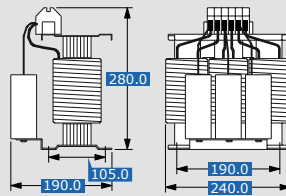
SFB 400/23,5

Sinusoidal filter

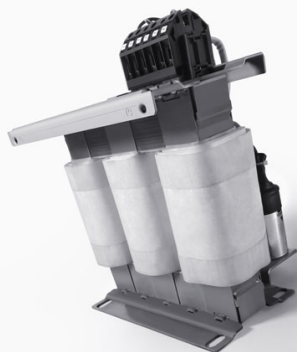
- Possibility of long shielded motor cables*
- High life expectancy and low noise of the connected motor

Output filter with capacitor for frequency inverter to IEC 61558-2-20, DIN EN 61558-2-20, VDE 0570 part 2-20

*200 m up to 520 V line voltage, 400 m up to 230 V line voltage



Dimensions in mm



SFB 400/23,5

Sinusoidal filter



Input data	
Rated voltage	3 x 400 V
Voltage range	up to 3 x 520 V
Voltage drop	typ. 3 x 30 V
Rated current	23.50 A
Frequency range	0 - 120 Hz

Output data	
for motor rated output approx.	11.00 kW
for inverter output approx.	16.30 kVA

Standards and security	
Approvals	C-UL-US
Protection index	IP 00
Safety class (prepared)	I
Ambient temperature max.	40 °C
Class of Insulation System	F
Test voltage	3000 V, 50 Hz

General data	
Application	suitable for installation in equipments and systems
Switching frequency	3 - 8 kHz

Mechanical data	
Type	open type
Terminals	screw-type terminals
Wire range	16 mm ²
Fixing screws	M6
Weight	14.50 kg

Order numbers	
Order Number	SFB 400/23,5

BLOCK Transformatoren-Elektronik GmbH
 Max-Planck-Straße 36-46
 27283 Verden
 Germany
 Phone +49 4231 678-0
 Fax +49 4231 678-177