

Vigor 2962

DrayTek

2.5Gb Ethernet Dual-WAN Firewall Router & VPN Concentrator

Premium. Reliable. Affordable.

Datasheet



Product Overview

The DrayTek Vigor 2962 Dual-WAN Load Balancing Firewall VPN router surpasses Gigabit speeds, to get the best performance out of FTTP Fibre Broadband and more. Connects to 2.5Gb Ethernet and SFP Fibre, for LAN or WAN use.

The Vigor 2962 provides a reliable, flexible, and secure network solution with extensive Firewall, Content Filtering, VPN client/server and Quality of Service controls.

An ideal VPN concentrator with 650Mbps SSL VPN performance. Connect up to 50 SSL VPN & OpenVPN users, or 200 IPsec tunnels. With up to 20 LAN subnets, BGP and OSPF, it's well equipped to manage larger, more complex networks and Multi Occupancy Offices.

Key Features & Benefits

High Performance Dual WAN Router

The Vigor 2962 makes full use of FTTP Fibre Broadband at up to 2.2Gbps throughput for single or dual-WAN configurations. With Quality of Service, Firewall and Content Filtering.

Benefits: Unleash the full potential of Fibre broadband. High performance CPE.

Manage Multiple Networks

Up to 20 separate networks with VLANs, port-based or tag-based. Handles larger and more complex networks with up to 300,000 active NAT sessions, BGP and OSPF support.

Benefits: Easily secure and segment your networks. Enterprise level networking features.

Capable SSL VPN Concentrator

Securely connect up to 50 users at once with DrayTek's SSL VPN, providing 650Mbps throughput. Supports all common VPN protocols, with extensive IPsec, L2TP and OpenVPN support.

Benefits: Performance suitable to connect many remote worker's VPN tunnels, simultaneously.

Flexible LAN/WAN Ports

Make full use of 2 WAN ports and 4 LAN ports, in any configuration. Use the 2.5-Gigabit Ethernet port and Gigabit SFP ports for Internet or LAN use, to fit your network's requirements.

Benefits: Improve quality of service for private and guest data traffic. Flexible application.

Packed With Features

Take advantage of DrayTek's rich feature set and useful functionality; fully configurable Quality of Service, Route Policy for advanced routing/failover, Hotspot Web Portal, VPN Matcher, DrayDDNS and more.

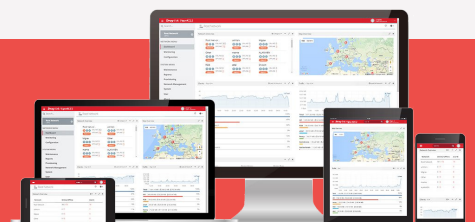
Benefits: Advanced DrayTek router functionality.

Great Central Management

Easily configure and manage DrayTek routers, APs and switches remotely from the VigorACS central management platform, for whole network visibility.

Benefits: Save time and money. Provision, monitor and manage remote sites without on-site IT.

Compatible with VigorACS Centralised Management Platform



Key Specification

- Dual-WAN, 2.5 Gigabit, Ethernet & SFP WAN Router
- Load Balancing & Failover with Route Policy for advanced routing management
- Up to 2.2Gbps Total Throughput for single or multi-WAN configurations
- Manage larger networks with 300k sessions, BGP & OSPF
- Up to 900Mbps IPsec VPN Throughput
- 200 LAN-to-LAN & Remote Teleworker VPN Tunnels
- 50 DrayTek SSL VPN or OpenVPN Tunnels
- Flexible port configuration, up to 5 LAN ports with 2.5GbE, SFP & RJ-45 Gigabit Ports
- 20 LAN Subnets with VLANs (Port-based / 802.1q)
- SPI Firewall and Content Filtering
- Optional VigorCare Available
- Compatible with VigorACS central management platform

Vigor 2962 series Router Models			
UK Product Code	EAN	Product Name	Product Description
V2962-K	4710484742001	Vigor 2962 (UK/IE)	Vigor2962 Dual WAN 2.5G Router

Technical Specification (UK Hardware Spec.)

Physical Interfaces

- WAN/LAN Switchable Ports:
 - 1x 2.5Gb Ethernet (2.5G/1G/100M/10M), RJ-45
 - 1x SFP (1G/100M) module slot or Gigabit Ethernet (1G/100M/10M), RJ-45
 - 2x Gigabit Ethernet (1G/100M/10M), RJ-45
- LAN Ports: 2x Gigabit Ethernet (1G/100M/10M), RJ-45
- USB Ports for USB thermometer, USB storage or Printer:
 - 1x USB 3.0 Port
 - 1x USB 2.0 Port
- Recessed Factory Reset button

Performance

- NAT Performance:
 - 2.2Gb/s Total NAT Throughput for single or dual WAN
 - 300,000 NAT Sessions
- VPN Performance:
 - 900 Mb/s IPsec (AES256) VPN Performance
 - 650 Mb/s SSL VPN Performance
 - Max. 200 Concurrent VPN Tunnels
 - Max. 50 Concurrent SSL VPN / OpenVPN Tunnels

WAN Interfaces

- WAN1: 2.5Gb or Gigabit Ethernet
- WAN2: SFP Fibre or Gigabit Ethernet

Internet Connection

- Load Balancing: IP-based, Session-based
- Hardware Acceleration
- 802.1p/q Multi-VLAN Tagging
- Multi-VLAN/PVC
- WAN Active on Demand: Link Failure, Traffic Threshold
- Connection Detection: PPP, ARP Detect, Ping Detect
- WAN Data Budget
- Dynamic DNS
- DrayDDNS - with automated LetsEncrypt Certificates
- Full Feature-set Hardware Acceleration:
 - Hardware Accelerated Quality of Service
 - Multi-WAN Data Budget
 - Traffic Graph & Data Flow Monitor
 - Bandwidth Limit
- IPv4 Connection Types: PPPoE, DHCP, Static IP
- IPv6 Connection Types: PPP, DHCPv6, Static IPv6, TSPC, AICCU, 6rd, 6in4 Static Tunnel

Firewall & Content Filtering

- IP-based or User-based Firewall Policy
- User-based Time Quota
- DoS Attack Defence
- Spoofing Defence
- Content Filtering:
 - Application Content Filter
 - URL Content Filter
 - DNS Keyword Filter

- Web Features
- Web Category Filter (requires GlobalView subscription)

NAT Features

- NAT Port Redirection (100 entries)
- Open Ports (100 entries)
- Port Triggering
- DMZ Host
- ALG (Application Layer Gateway): SIP, RTSP, FTP, H.323
- VPN Pass-Through: PPTP, L2TP, IPsec

LAN Management

- 802.1q Tag-based, Port-based VLAN
- Up to 20 LAN Subnets (NAT or Routing mode selectable per LAN interface)
- Up to 20 VLANs
- IP Routed Subnet
- Link Aggregation (LAG) for LAN ports 3 & 4* - **New!**
- Wired 802.1x Port Authentication*
- DHCP Server:
 - Multiple IP Subnet
 - Custom DHCP Options
 - Bind-IP-to-MAC
 - DHCP Pool Count up to 1021 addresses for all LAN subnets
- LAN IP Alias
- Port Mirroring (physical port or .pcap download)
- Local DNS Server
- Conditional DNS Forwarding
- Hotspot Web Portal
- Hotspot Authentication: Click-Through, Social Login, SMS PIN, Email PIN, Voucher PIN, RADIUS, External Portal Server

Networking Features

- Policy-based Routing: Protocol, IP Address, Port, Domain/Hostname, Country
- High Availability: Active-Standby, Hot-Standby
- DNS Security (DNSSEC)
- Local RADIUS server
- SMB File Sharing (Requires external storage)
- Multicast: IGMP Proxy, IGMP Snooping* & Fast Leave, Bonjour
- Routing Features:
 - IPv4 & IPv6 Static Routing
 - Inter-VLAN Routing
 - RIP v1/v2/ng
 - BGP

VPN

- Up to 200 active VPN tunnels - including up to 50 SSL VPN or OpenVPN Tunnels
- LAN-to-LAN - Dial-In VPN Server & Dial-Out VPN Client
- Teleworker-to-LAN - Dial-In VPN Server
- User Authentication: Local, RADIUS, LDAP, TACACS+, mOTP
- IKE Authentication: Pre-Shared Key and Digital Signature (X.509)
- Encryption: MPPE, DES, 3DES, AES (128/192/256)

Technical Specification (UK Hardware Spec.) (cont.)

VPN (cont...)

- Authentication: SHA-256, SHA-1
- VPN Trunk (Redundancy): Load Balancing, Failover
- Dead Peer Detection (DPD)
- IPsec NAT-Traversal (NAT-T)
- Virtual IP Mapping – Resolve VPN IP subnet/range conflicts
- DHCP over IPsec
- DrayTek VPN Matcher – Connect to a VPN router that's behind NAT/CG-NAT - **New!**
- VPN Protocols:
 - IPsec IKEv1, IKEv2, IKEv2 EAP
 - IPsec-XAuth
 - DrayTek SSL VPN
 - OpenVPN
 - GRE over IPsec
 - PPTP (for legacy applications)
 - L2TP, L2TP over IPsec

Bandwidth Management

- IP-based Bandwidth Limit
- IP-based Session Limit
- User-based Data Quota
- QoS (Quality of Service):
 - Classify via TOS, DSCP, 802.1p, IP Address, Service Type
 - 4 Priority Queues
 - App QoS
 - VoIP Prioritization

Management

- Local Service: HTTP, HTTPS, Telnet, SSH, FTP, TR-069
- Config File Export
- Firmware Upgrade via TFTP, HTTP, TR-069
- 2-Level Administration Privilege
- Access Control Features: Access List, Brute Force Protection
- Syslog
- SMS, E-mail Notification Alert

- User-defined MSG LED on router, displays ACS connection status by default* - **New!**
- SNMP: v1, v2c, v3
- Managed by VigorACS
- Router Central Management Features:
 - AP Management: Up to 50 VigorAP access points
 - Switch Management: Up to 30 VigorSwitch network switches

Operating Requirements

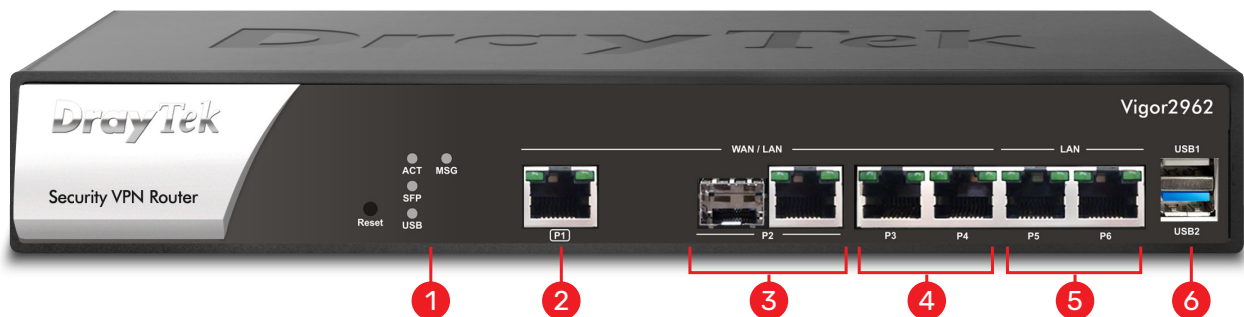
- Rack Mountable with fittings included – 1U height
- Temperature Operating: 0 °C ~ 45 °C
- Storage: -25 °C ~ 70 °C
- Humidity 10% ~ 90% (non-condensing)
- Power Consumption:
 - 15 Watts Max.
- Dimensions:
 - 273mm Width
 - 170mm Depth
 - 45mm Height
- Weight: 1.7kg
- Warranty: Two (2) Years RTB
- Power Requirements: 220-240VAC

Box Contents

- Vigor 2962 router
- Quick Start Guide
- 1u Rack Mount Fittings
- 2m Cat-5e RJ-45 Network Cable
- IEC C13 Power Cord with UK Plug

ROHS & CE Compliant

Warranty: 2 Year Manufacturer's RTB



- | | |
|-------------------------------|-------------------------------|
| ① LED Status Indicators | ④ 2x 1GbE RJ-45 LAN/WAN Ports |
| ② 2.5GbE RJ-45 LAN/WAN Port | ⑤ 2x 1GbE RJ-45 LAN Ports |
| ③ 1GbE RJ-45/SFP LAN/WAN Port | ⑥ USB 2 & 3 Ports |