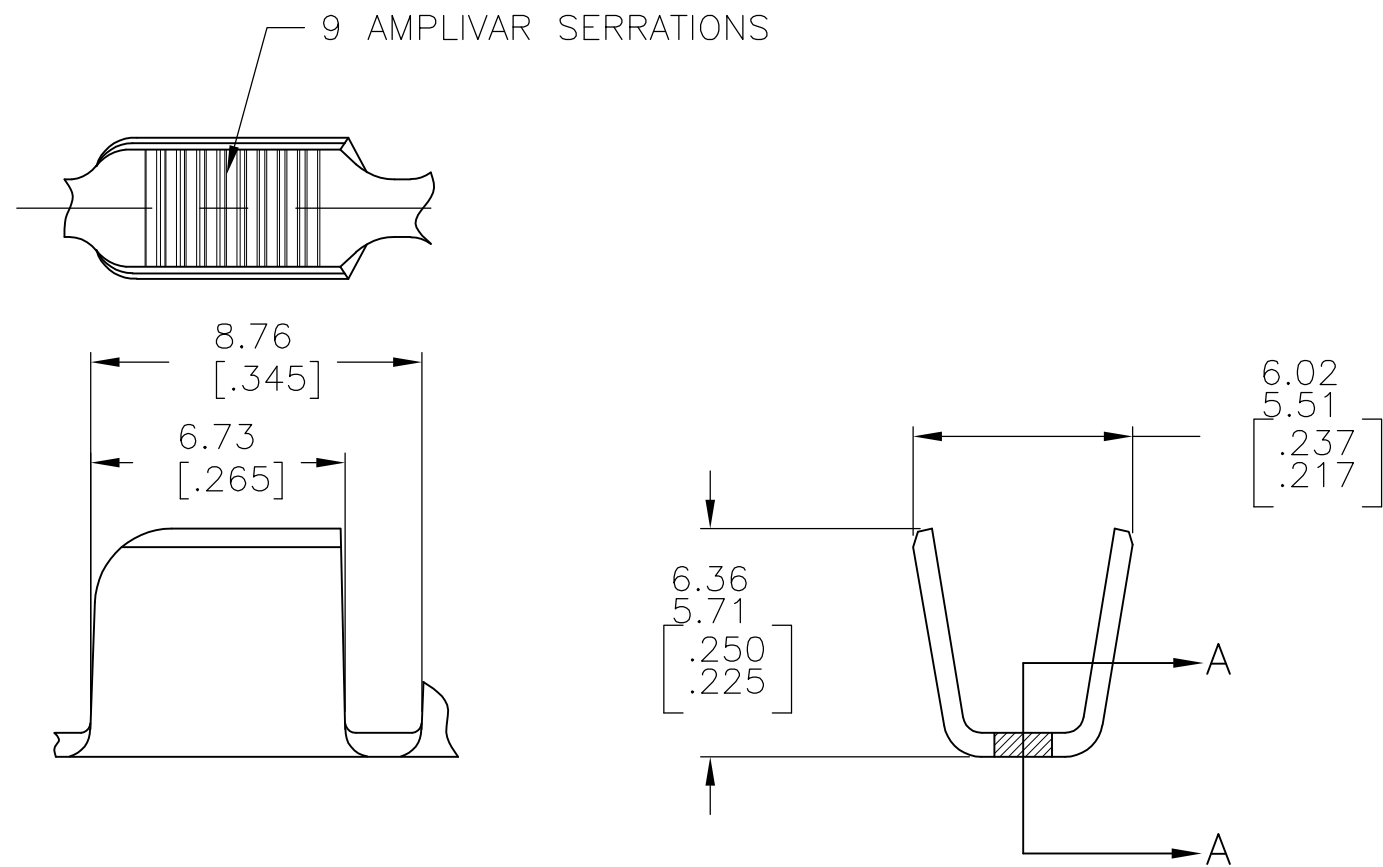
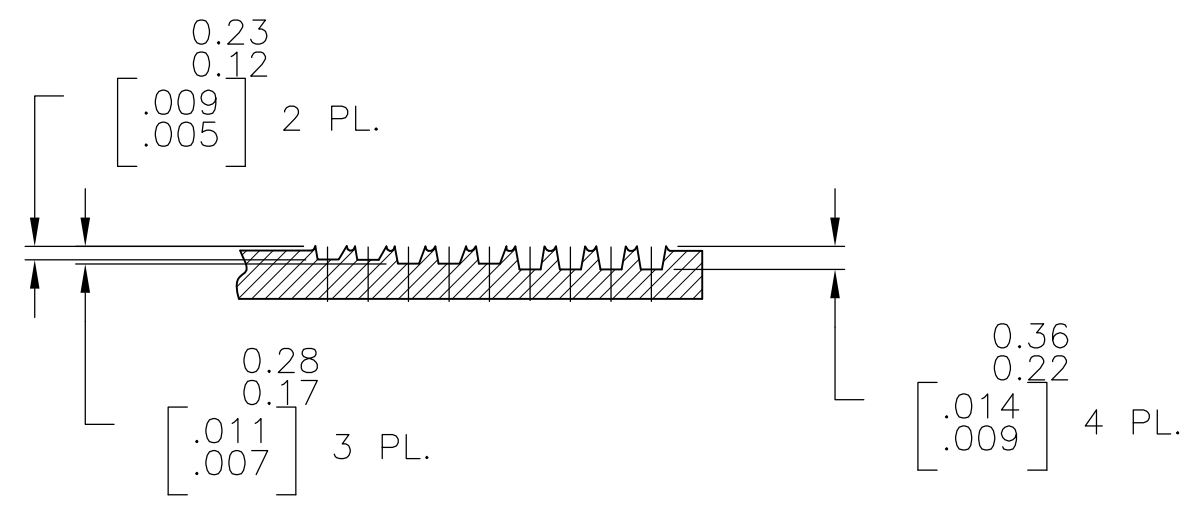


THIS DRAWING IS UNPUBLISHED. RELEASED FOR PUBLICATION  
 © COPYRIGHT - BY TYCO ELECTRONICS CORPORATION. ALL RIGHTS RESERVED.

LOC		DIST		REVISIONS			
P	LTR	DESCRIPTION		DATE	DWN	APVD	
AF	50	F3	REVISED PER ECR-10-007904	16APR10	HMR	GP	



- 1 PRODUCT PROVIDED IN STRIP FORM ON REELS; BREAKS MAY BE PRESENT.
- 2 DIMENSIONS IN BRACKETS ARE IN INCHES.
- 3 CRIMP WIDTH: .180 F (AMPLIVAR TYPE)  
 CRIMP HEIGHT (±.002)=(TOTAL CMA+23,000)/312,500  
 GENERAL APPLICATION GUIDELINES MUST BE FOLLOWED AS SPECIFIED IN CATALOG #82221  
 FOR APPLICATOR INFORMATION CALL : 1-800-722-1111  
 FOR PRODUCT INFORMATION CALL : 1-800-522-6752



SECTION A-A  
 SCALE : 10:1

OBSOLETE	—REVERSE	62310-3
	STANDARD	62310-2
	REELING	PART NO

**METRIC**

THIS DRAWING IS A CONTROLLED DOCUMENT.		DWN RAGHAVENDRA 31JAN06	Tyco Electronics Corporation Harrisburg, PA 17105-3608	
DIMENSIONS: mm [INCHES]		CHK G.D.PORTA	NAME	
TOLERANCES UNLESS OTHERWISE SPECIFIED:		APVD G.D.PORTA	SPLICE, AMPLIVAR 7000-13000 CMA	
0 PLC ± -		PRODUCT SPEC	APPLICATION SPEC	
1 PLC ± -		114-2003		
2 PLC ± 0.38[.015]		WEIGHT -	SIZE A3	CAGE CODE 00779
3 PLC ± -		DRAWING NO C-62310		
4 PLC ± -		RESTRICTED TO -		
ANGLES ± 1°		SCALE 5:1		
FINISH TIN PL.		SHEET 1 OF 1		
MATERIAL REF 0.64±0.03 [.025±.001] BRASS		REV F3		
		CUSTOMER DRAWING		