

Modular Electric Actuators OSP-E

ORIGA SYSTEM PLUS

aerospace
climate control
electromechanical
filtration
fluid & gas handling
hydraulics
pneumatics
process control
sealing & shielding



ENGINEERING YOUR SUCCESS.

End Cap Mounting

Size 25, 32, 50



- Series OSP-E..SBR, ..STR Actuator with Screw and extending rod

On the end-face of each end cap there are four threaded holes for mounting the actuator.

The hole layout is square, so that the mounting can be fitted to the bottom, top or either side.

Material:

Series OSP-25 to 32:

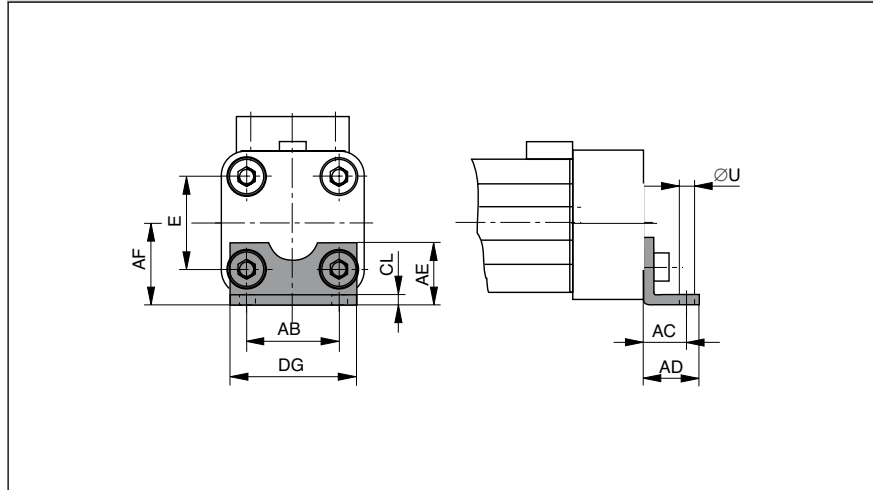
Galvanised steel.

Series OSP-50:

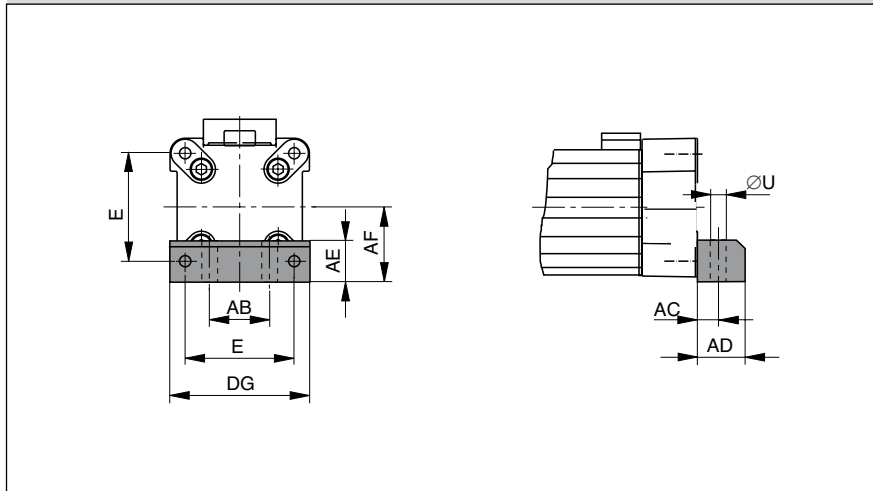
Anodized aluminium.

The mountings are supplied as pairs

Series OSP-E25 to E32: Type A1



Series OSP-E50: Type C1



Dimension Table [mm] and Order Instruction

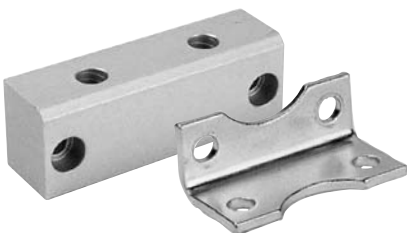
Series	E	ØU	AB	AC	AD	AE	AF	CL	DG	Order No. *)	
										Typ A1	Typ C1
OSP-E25	27	5,8	27	16	22	18	22	2,5	39	2010	–
OSP-E32	36	6,6	36	18	26	20	30	3	50	3010	–
OSP-E50	70	9	40	12,5	24	30	48	–	86	–	5010

*) = Pair

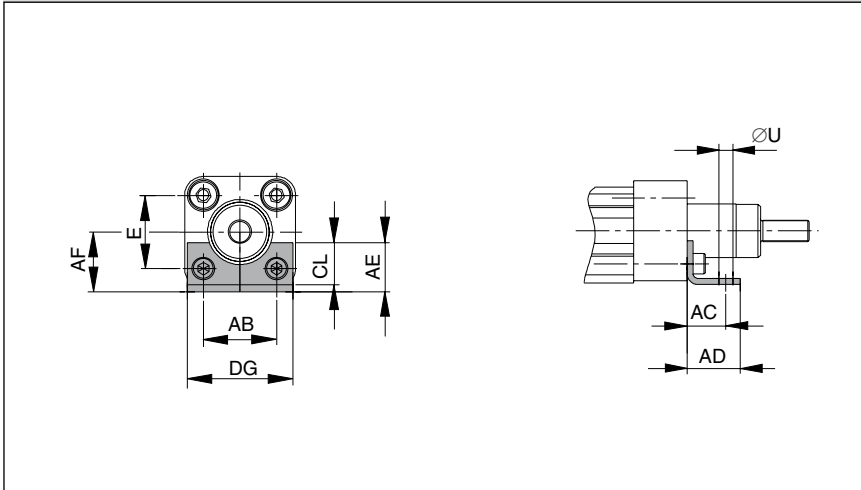
Important:

With the OSP-E Screw series, the end cap mounting can only be used at the end opposite to the drive shaft.

We recommend the application of two mid section supports (page 136 ff) at the drive shaft end of the actuator.



Series OSP-E25SBR, 25STR to E32SBR, 32STR: Type A1SR



End Cap Mounting

Size 25, 32, 50



- Series OSP-E..SBR, ..STR Actuator with Screw and extending rod

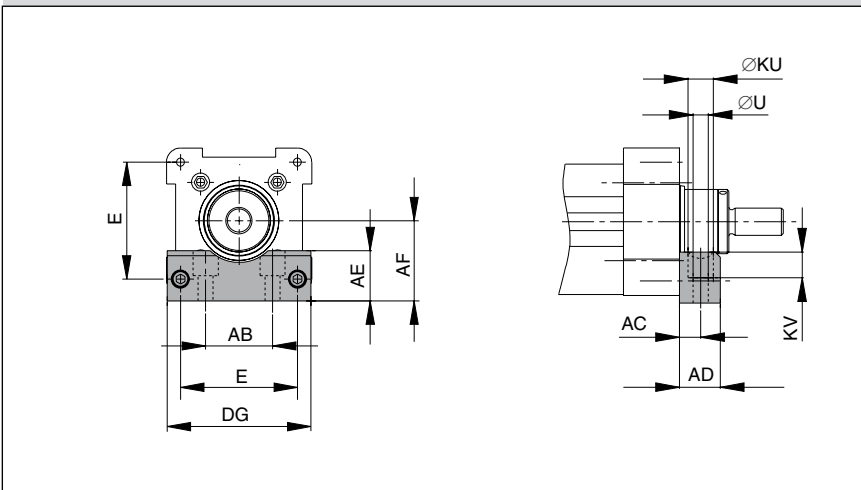
On the end-face of each end cap there are four threaded holes for mounting the actuator.

The hole layout is square, so that the mounting can be fitted to the bottom, top or either side.

Material:
 Series OSP-25 to 32:
 Galvanised steel.
 Series OSP-50:
 Anodized aluminium.

The mountings are supplied as pairs

Series OSP-E50SBR, 50STR: Type C1SR



Dimension Table [mm] and Order Instruction

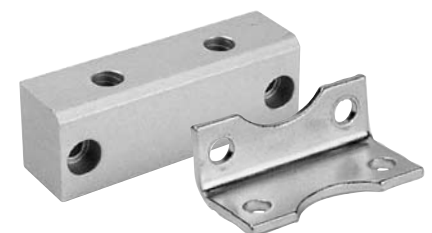
Series	E	ØU	AB	AC	AD	AE	AF	CL	DG	ØKU	KV	Order No. *)	
												Type A1SR	Type C1SR
OSP-E25SBR, STR	27	5,8	27	16	22	18	22	2,5	39	-	-	12263	-
OSP-E32SBR, STR	36	6,6	36	18	26	20	30	3	50	-	-	12264	-
OSP-E50SBR, STR	70	9	40	12,5	24	30	48	-	86	15	15	-	12265

*) = single

Important:

With the OSP-E Screw series, the end cap mounting can only be used at the end opposite to the drive shaft.

We recommend the application of two mid section supports (page 136 ff) at the drive shaft end of the actuator.



Flange Mounting C-E

Size 25, 32, 50

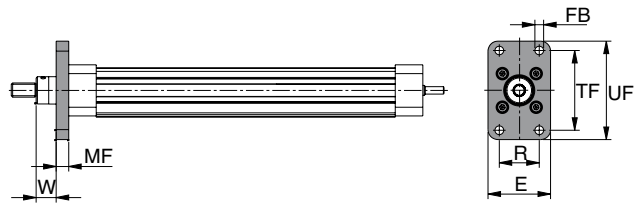


- Series OSP-E..SBR, ..STR Actuator with Screw and piston rod

The flange mounting C-E can only be mounted at the piston rod end of the actuator.

Material: Aluminium

Series OSP-E25SBR, STR to E50SBR, STR: Type C-E..



Dimension Table [mm] and Order Instructions

Series	Type	∅ FB	E	MF	R	TF	UF	W	Order No.
OSP-E25SBR, STR	C-E25	7	50	10	32	64	79	16	12232
OSP-E32SBR, STR	C-E32	9	56	10	36	72	90	16	12233
OSP-E50SBR, STR	C-E50	12	100	16	63	126	153	21	12234

