

TE Internal #: 530733-3
PCB Mount Header, Right Angle, Board-to-Board, 60 Position, 1.27 mm [.05 in] Centerline, Partially Shrouded, Gold (Au), Through Hole - Solder

[View on TE.com >](#)



Connectors > PCB Connectors > PCB Headers & Receptacles



PCB Connector Type: **PCB Mount Header**
PCB Mount Orientation: **Right Angle**
Connector System: **Board-to-Board**
Number of Positions: **60**
Number of Rows: **2**

Features

Product Type Features

PCB Connector Type	PCB Mount Header
Connector System	Board-to-Board
Header Type	Partially Shrouded
Sealable	No
Connector & Contact Terminates To	Printed Circuit Board
Connector Product Type	Connector Assembly

Configuration Features

Stackable	No
PCB Mount Orientation	Right Angle
Number of Positions	60
Number of Rows	2

Electrical Characteristics

Dielectric Withstanding Voltage (Max)	600 VAC
---------------------------------------	---------

Body Features

Primary Product Color	Gray
-----------------------	------

Contact Features

PCB Contact Termination Area Plating Material Finish	Matte
--	-------



Contact Mating Area Plating Material Thickness	.76 µm[30 µin]
Mating Square Post Dimension	.46 mm[.018 in]
Contact Layout	Staggered
Contact Base Material	Brass
PCB Contact Termination Area Plating Material	Tin-Lead
Contact Mating Area Plating Material	Gold (Au)
Contact Type	Pin
Contact Current Rating (Max)	1.5 A

Termination Features

Rectangular Termination Post & Tail Width	.46 mm[.018 in]
Rectangular Termination Post & Tail Thickness	.23 mm[.009 in]
Termination Post & Tail Length	2.79 mm, 4.69 mm, 6.6 mm, 8.5 mm[.11 in][.185 in][.26 in][.335 in]
Termination Method to PCB	Through Hole - Solder

Mechanical Attachment

Mating Alignment Type	Keyed
PCB Mount Retention	Without
PCB Mount Alignment	With
Connector Mounting Type	Board Mount
Mating Alignment	With

Housing Features

Housing Material	LCP (Liquid Crystal Polymer)
Centerline (Pitch)	1.27 mm[.05 in]

Dimensions

Row-to-Row Spacing	3.81 mm[.15 in]
Stack Height	15.24 mm[.6 in]
PCB Thickness (Recommended)	.05 – .07 mm[.054 – .07 in]
Connector Height	13.21 mm[.52 in]

Usage Conditions

Operating Temperature Range	-65 – 125 °C[-85 – 257 °F]
-----------------------------	----------------------------

Operation/Application

Assembly Process Feature	None
--------------------------	------



Circuit Application	Power & Signal
Industry Standards	
UL Flammability Rating	UL 94V-0

Packaging Features	
Packaging Quantity	6
Packaging Method	Package

Product Compliance

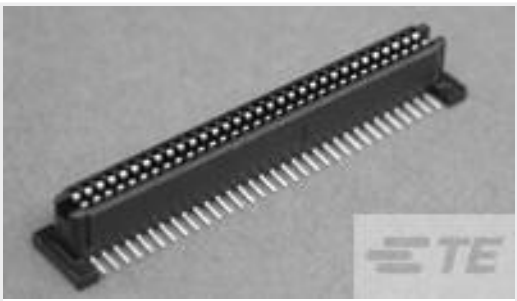
For compliance documentation, visit the product page on TE.com>

EU RoHS Directive 2011/65/EU	Compliant
EU ELV Directive 2000/53/EC	Not Yet Reviewed
China RoHS 2 Directive MIIT Order No 32, 2016	No Restricted Materials Above Threshold
EU REACH Regulation (EC) No. 1907/2006	Current ECHA Candidate List: JAN 2025 (247) Candidate List Declared Against: JAN 2019 (197) Does not contain REACH SVHC
Halogen Content	Low Halogen - Br, Cl, F, I < 900 ppm per homogenous material. Also BFR/CFR/PVC Free
Solder Process Capability	Wave solder capable to 265°C

Product Compliance Disclaimer

This information is provided based on reasonable inquiry of our suppliers and represents our current actual knowledge based on the information they provided. This information is subject to change. The part numbers that TE has identified as EU RoHS compliant have a maximum concentration of 0.1% by weight in homogenous materials for lead, hexavalent chromium, mercury, PBB, PBDE, DBP, BBP, DEHP, DIBP, and 0.01% for cadmium, or qualify for an exemption to these limits as defined in the Annexes of Directive 2011/65/EU (RoHS2). Finished electrical and electronic equipment products will be CE marked as required by Directive 2011/65/EU. Components may not be CE marked. Additionally, the part numbers that TE has identified as EU ELV compliant have a maximum concentration of 0.1% by weight in homogenous materials for lead, hexavalent chromium, and mercury, and 0.01% for cadmium, or qualify for an exemption to these limits as defined in the Annexes of Directive 2000/53/EC (ELV). Regarding the REACH Regulation, the information TE provides on SVHC in articles for this part number is based on the latest European Chemicals Agency (ECHA) ‘Guidance on requirements for substances in articles’ posted at this URL: <https://echa.europa.eu/guidance-documents/guidance-on-reach>

Customers Also Bought



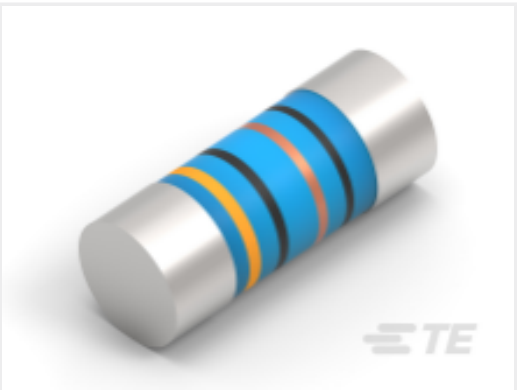
TE Part #5146893-2
[1FHR,84,30A/S,S,C,S08,09,10](#)



TE Part #5-103911-3
[60 SYSTEM 50 RCPT ASSY DRRA](#)



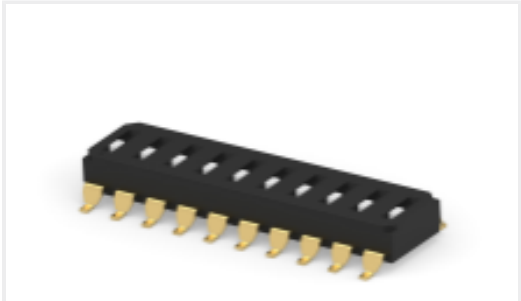
TE Part #5-104076-2
[60 SYS50 HDR DRST SHRD W/SL SN](#)



TE Part #2176314-4
[MELF SMA_A 180R 0.1% 15PPM 0102 0.3W](#)



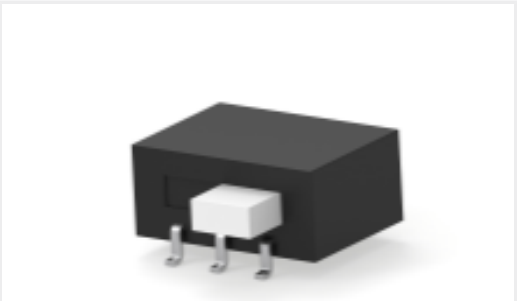
TE Part #3-1415020-1
[PT570N20](#)



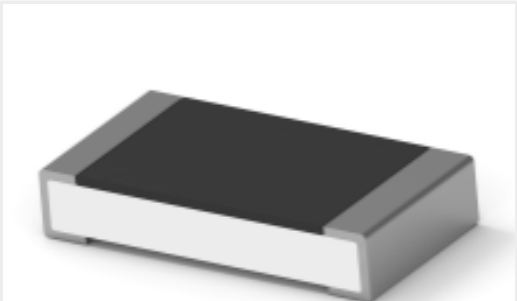
TE Part #3-2319848-1
[END STACK DIP 10P G RECESS SEAL TUBE](#)



TE Part #1-928836-2
[MOD2 PIN WITH A-PIN L/P](#)



TE Part #1-1437581-1
[ASE22RL=AUTOSLIDE DP](#)



TE Part #4-2176391-7
[RQ 1206 37K4 0.1% 10PPM 5K RL](#)



TE Part #7-2176246-6
[CRGS2512 5% 1M8](#)

Documents

Product Drawings

[MINI-BX PIN HDR ASY 60 POS RA](#)

English

CAD Files

[3D PDF](#)

3D

Customer View Model

[ENG_CVM_CVM_530733-3_T.2d_dxf.zip](#)

English

Customer View Model

[ENG_CVM_CVM_530733-3_T.3d_igs.zip](#)

English

Customer View Model

[ENG_CVM_CVM_530733-3_T.3d_stp.zip](#)

English

By downloading the CAD file I accept and agree to the [Terms and Conditions](#) of use.

Instruction Sheets

530733-3

PCB Mount Header, Right Angle, Board-to-Board, 60 Position, 1.27 mm [.05 in]
Centerline, Partially Shrouded, Gold (Au), Through Hole - Solder



[Instruction Sheet \(U.S.\)](#)

English

[AMP 501 SERIES MINI-BOX CONNECTORS](#)

English