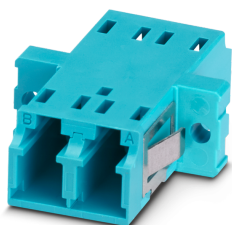


Fiber optic coupling - FOC-ADAPTER:LCD/LCD-OM3 - 1208070

Please be informed that the data shown in this PDF Document is generated from our Online Catalog. Please find the complete data in the user's documentation. Our General Terms of Use for Downloads are valid (<http://phoenixcontact.com/download>)




Fiber optic coupling, degree of protection: IP20, number of positions: 2, material: Plastic, connection method: Coupling, cable outlet: straight, color: turquoise

Your advantages

- ✓ High reliability with comprehensive quality assurance measures
- ✓ Optimized precision (stability) with the use of ceramic sleeves
- ✓ Versatile range of applications with an extended temperature range and various mounting options
- ✓ Optimum compatibility with the FDX20 series splice boxes
- ✓ Future-proof with RoHS 2 conformity



Key Commercial Data

| | |
|--------------------------------------|---|
| Packing unit | 6 pc |
| Minimum order quantity | 6 pc |
| GTIN |  4 063151 275099 |
| GTIN | 4063151275099 |
| Weight per Piece (excluding packing) | 5.033 g |
| Custom tariff number | 85367000 |
| Sales Key | ABNACG |

Technical data

Mechanical characteristics

| | |
|--|----------|
| Connection method | Coupling |
| Number of slots | 2 |
| Insertion/withdrawal cycles | ≥ 500 |
| Number of positions | 2 |
| Cable outlet | straight |
| Weight | 5.033 g |
| Flammability rating according to UL 94 | V0 |

Fiber optic coupling - FOC-ADAPTER:LCD/LCD-OM3 - 1208070

Technical data

Ambient conditions

| | |
|---|------------------|
| Ambient temperature (operation) | -20 °C ... 70 °C |
| Ambient temperature (assembly) | 0 °C ... 50 °C |
| Ambient temperature (storage/transport) | -40 °C ... 85 °C |

Material data

| | |
|------------------|---------|
| Housing material | Plastic |
| Width | 22 mm |
| Height | 9.4 mm |
| Length | 29.2 mm |

Standards and Regulations

| | |
|-------------------|-----|
| Flame resistance | yes |
| Resistance to oil | no |

Classifications

eCl@ss

| | |
|---------------|----------|
| eCl@ss 10.0.1 | 27440390 |
| eCl@ss 11.0 | 27440392 |
| eCl@ss 9.0 | 27440390 |

ETIM

| | |
|----------|----------|
| ETIM 7.0 | EC002943 |
|----------|----------|

Approvals

Approvals

Approvals

EAC

Ex Approvals

Approval details

| | | |
|-----|---|---------|
| EAC |  | B.01687 |
|-----|---|---------|