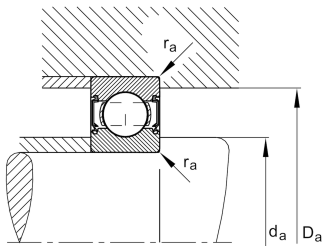
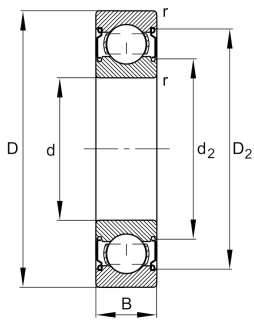


**FAG****6308-C-2Z-C3**

## Deep groove ball bearing

Deep groove ball bearing 63...-C-2Z, single row, Generation C, shields, steel sheet metal cage

## Technical information



## Your current product variant

Changed internal design	C	GenerationC
Sealing	2Z	Non-contact shield on both sides
Cage	JN	Steel sheet metal
Tolerance class	P6	Class6 (P6), better than PN
Dimensional / heat stabilization	SN	Rings dimensional stabilized up to 120°
Lubricant	GA13	Ball bearing and insert bearing grease, standard for D>62mm
Radial internal clearance	C3 (Group 3)	Internal clearance larger than CN
Bore type	Z	Cylindrical

## Main Dimensions &amp; Performance Data

d	40 mm	Bore diameter
D	90 mm	Outside diameter
B	23 mm	Width
C <sub>r</sub>	50,000 N	Basic dynamic load rating, radial
C <sub>0r</sub>	25,000 N	Basic static load rating, radial
C <sub>ur</sub>	1,730 N	Fatigue load limit, radial
n <sub>G</sub>	10,100 1/min	Limiting speed
n <sub>gr</sub>	9,900 1/min	Reference speed
≈m	0.606 kg	Weight



Mounting dimensions

$d_{a\ min}$	49 mm	Minimum diameter shaft shoulder
$D_{a\ max}$	81 mm	Maximum diameter of housing shoulder
$r_{a\ max}$	1.5 mm	Maximum fillet radius

Dimensions

$r_{\min}$	1.5 mm	Minimum chamfer dimension
$D_1$	75.54 mm	Shoulder diameter outer ring
$D_2$	78.61 mm	Caliber diameter outer ring
$d_1$	55.08 mm	Shoulder diameter inner ring
$d_2$	52.28 mm	Caliber diameter inner ring

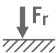

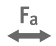



Temperature range

$T_{\min}$	-20 °C	Operating temperature min.
$T_{\max}$	120 °C	Operating temperature max.

Calculation factors

$f_0$	13	Calculation factor
-------	----	--------------------

Characteristics

	Radial load
	Axial load in one direction
	Axial load in two directions
	Lifetime lubrication, freedom from maintenance
	Grease Lubrication
	Sealed on both sides