



HF-Performer II for PL-T/C/R/L/TL5C lamps

HF-P 1 22-42 PL-T/C/L/TL5C EII 220-240V

HF-Performer EII PL-T/C/R/T5c is a sustainable, slim and high-frequency electronic ballast for a wide range of CFL- ni applications. It is ideal for applications where high energy efficiency is required. The HF-Performer EII range has a robust design, meets all relevant international safety and performance standards and is energy-efficient (CELMA EEI A2).;The ballast is primarily designed for Indoor application. For outdoor application, the luminaire should be minimum Classland need to be sufficiently protected against water & dust. The installation should also be guard against any lightening surge or any other necessary electrical protection as deemed in such typical installation & application.

Product data

| General Information | | Operating and Electrical | |
|--|---------------|--------------------------------|-------------|
| Application Code | EII | Operating Frequency (Min) | 42 kHz |
| Type Version | mk4 | Operating Frequency (Nom) | 45 kHz |
| Lamp Type | PL-T/C/L/TL5C | Ignition Method | Warm Start |
| Number of Lamps | 1 piece/unit | Crestfactor (Max) | 1.7 |
| Number of Products on MCB (16A Type B) (Nom) | 28 | Power Factor 100% Load (Nom) | 0.95 |
| Automatic Restart | Yes | Ignition Time (Max) | 0.52 s |
| | | Mains Voltage Performance (AC) | -8%+6% |
| | | Mains Voltage Safety (AC) | -10%+10% |
| | | Earth Leakage Current (Nom) | 0.5 mA |
| | | Inrush Current Width | 0.25 ms |
| | | Constant Wattage Deviation | -2%/+2% |
| | | Ballast Factor (Nom) | 1 |
| | | Power Losses (Nom) | 2.86-2.66 W |

HF-Performer II for PL-T/C/R/L/TL5C lamps

| | |
|--|---|
| Inrush Current Peak (Max) | 18 A |
| Wiring | |
| Connector Type Input Terminals | Insert |
| Cable Capacity Output Wires Mutual (Nom) | 200 pF |
| Connector Type Output Terminals | Insert |
| Cable Length Hot Wiring | 0.75 m |
| Wire Striplength | 7.5-8.5 mm |
| Dual Fixture Master/Slave | Not applicable [Master/Slave oper. not applicable] |
| Input Terminal Cross Section | 0.50-1.50 mm ² |
| Output Terminal Cross Section | 0.50-1.50 mm ² |
| Cable Capacity Output Wires to Earth (Nom) | 200 pF |

System characteristics

| | |
|----------------------------|---------|
| Rated Ballast-Lamp Power | 22-42 W |
| Rated Lamp Power on PL-T/C | 22/42 W |

Temperature

| | |
|-----------------------|--------|
| T-Ambient (Max) | 50 °C |
| T-Ambient (Min) | -25 °C |
| T-Storage (Max) | 80 °C |
| T-Storage (Min) | -40 °C |
| T-Case Lifetime (Nom) | 75 °C |
| T-Case Maximum (Max) | 75 °C |
| T-Ignition (Max) | 50 °C |
| T-Ignition (Min) | -25 °C |

Emergency Operation

| | |
|--------------------------------|-----------|
| Battery Voltage Lamp Ignition | 198-254 V |
| Battery Voltage Lamp Operation | 176-254 |

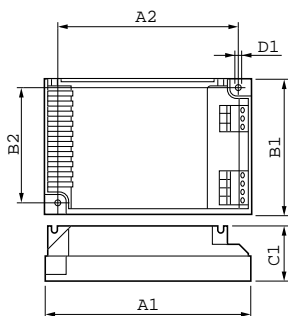
Approval and Application

| | |
|------------------------------------|---|
| Energy Efficiency Index | A2 |
| IP Classification | IP 20 [Ingress Protection 20] |
| EMI 9 kHz ... 30 MHz | EN55015 |
| EMI 30 MHz ... 1000 MHz | EN55022 level B |
| Safety Standard | IEC 61347-2-3 |
| Performance Standard | IEC 60929 |
| Quality Standard | ISO 9000:2000 |
| Environmental Standard | ISO 14001 |
| Harmonic Current Emission Standard | IEC 61000-3-2 |
| EMC Immunity Standard | IEC 61547 |
| Vibration Standard | IEC68-2-6 F c |
| Bumps Standard | IEC 68-2-29 Eb |
| Humidity Standard | EN 61347-2-3 clause 11 |
| Approval Marks | CE marking ENEC certificate VDE-EMV certificate |
| Temperature Marking | Yes |
| Emergency Standard | IEC 60598-2-22 |
| Hum And Noise Level | Inaudible |

Product Data

| | |
|---------------------------------|--------------------------------|
| Full product code | 871150091397530 |
| Order product name | HF-P 1 22-42 PL-T/C/L/TL5C EII |
| | 220-240V |
| EAN/UPC - Product | 8711500913975 |
| Order code | 913700630766 |
| Numerator - Quantity Per Pack | 1 |
| Numerator - Packs per outer box | 12 |
| Material Nr. (12NC) | 913700630766 |
| Net Weight (Piece) | 0.140 kg |

Dimensional drawing



HF-P 1 22-42 PL-T/C/L/TL5C EII 220-240V

| Product | D1 | C1 | A1 | A2 | B1 | B2 |
|------------------------|--------|------|-------|------|------|------|
| HF-P 1 22-42 PL-T/C/L/ | 4.5 mm | 30.0 | 103.0 | 93.5 | 67.0 | 57.5 |
| TL5C EII 220-240V | | mm | mm | mm | mm | mm |

HF-Performer II for PL-T/C/R/L/TL5C lamps

