



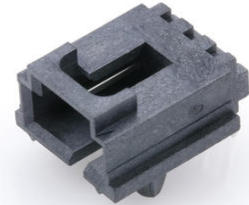
Part Number : [1719750003](#)

Product Description : 2.54mm Pitch SL Header, Single Row, Right-Angle, LCP, Shrouded, Through Hole, with Pegs, 0.75µm Selective Gold (Au) Plating, 3 Circuits

Series Number : 171975

Status : Active

Product Category : PCB Headers and Receptacles



Documents & Resources

Drawings

[1719750003 sd.pdf](#)

[1719740000-PK-000.pdf](#)

3D Models and Design Files

[STEP AP242](#)

[SOLIDWORKS](#)

[Creo](#)


[Symbol and Footprint \(Multi-Format\)](#)

Specifications

[1719710000-PS-000.pdf](#)

Product Environment Compliance

Compliance

GADSL/IMDS	Compliant with Exemption 44; 33
China RoHS	 per SJ/T 11365-2006
EU ELV	Not Relevant
Low-Halogen Status	Low-Halogen per IEC 61249-2-21
REACH SVHC	Not Contained per D(2024)7663-DC (21 Jan 2025)
EU RoHS	Compliant per EU 2015/863

[Compliance Statements](#)

- EU RoHS
- REACH SVHC
- Low-Halogen

Industry Documents

- IPC 1752A Class C
- IPC 1752A Class D
- Molex Product Compliance Declaration
- IEC-62474
- chemSHERPA (xml)

Substances of Interest

- PFAS

EU RoHS Certificate of Compliance

Additional Product Compliance Information

Part Details

General

Status	Active
Category	PCB Headers and Receptacles
Series	171975
Description	2.54mm Pitch SL Header, Single Row, Right-Angle, LCP, Shrouded, Through Hole, with Pegs, 0.75µm Selective Gold (Au) Plating, 3 Circuits
Application	Signal, Wire-to-Board
Component Type	PCB Header
Product Name	SL
UPC	191128211765

Electrical

Current - Maximum per Contact	3.0A
Voltage - Maximum	250V

Physical

Breakaway	No
Circuits (Loaded)	3
Circuits (maximum)	3

Color - Resin	Black
First Mate / Last Break	No
Glow-Wire Capable	No
Guide to Mating Part	Yes
Keying to Mating Part	None
Lock to Mating Part	Yes
Material - Metal	Brass
Material - Plating Mating	Matte Tin
Material - Plating Termination	Matte Tin
Material - Resin	Liquid Crystal Polymer
Net Weight	0.874/g
Number of Rows	1
Orientation	Right Angle
Packaging Type	Tube
PCB Locator	Yes
PCB Retention	Yes
PCB Thickness - Recommended	1.57mm
PC Tail Length	3.30mm
Pitch - Mating Interface	2.54mm
Pitch - Termination Interface	2.54mm
Plating min - Mating	2.540µm
Plating min - Termination	2.540µm
Polarized to Mating Part	Yes
Polarized to PCB	Yes
Shrouded	Fully
Temperature Range - Operating	-40° to +105°C
Termination Interface Style	Through Hole

Mates With / Use With

Mates with Part(s)

Description	Part Number
SL Single Row Female Insulation Displacement Connector Assemblies	<u>70400</u>

SL Single Row Crimp Housings and CPA Retainers	<u>70066</u>
SL Single Row Female Receptacles	<u>70430</u>

This document was generated on Nov 06, 2025