



SKU: KV600

KEY CABINETS

When it comes to keys, you want to make sure they're safe. From a simple key cabinet to a more advanced issue and monitoring system, Securikey can offer a solution to meet your requirements.

KEY VAULT 600

- Heavy duty key cabinet designed to meet the growing need for added security
- 2.5mm fabricated steel cabinet with flush closing door to resist forced entry
- Locking by security deadlock with 5-pin Euro profile cylinder & 2 keys
- Adjustable colour coded and numbered hook bars allow the layout to be customised
- Ingenious key tabs are designed to hang so that the number is always visible
- Includes 7 security seals and loops to secure keys that require clear evidence of tampering or removal
- Key locations can be recorded on the control index which is removable for added security
- Use your own cylinder to incorporate the cabinet into an existing suited system
- Cylinder can be easily changed in seconds to ensure total security
- Durable Light Grey paint finish will suit most environments



ADDITIONAL INFORMATION

Weight	43.000 kg
Dimensions	550 (H) x 730 (W) x 205 (D) mm
Standard	Silver
Locking Options	A – REVO B/BR, B – 3/4 Wheel Mechanical Combination, C – REVO A, E – Mechanical Push Button Lock, G – Wittkopp Primor 2000, I – La Gard 39E, K – La Gard 66E, L – Safe Logic
Capacity	600 keys

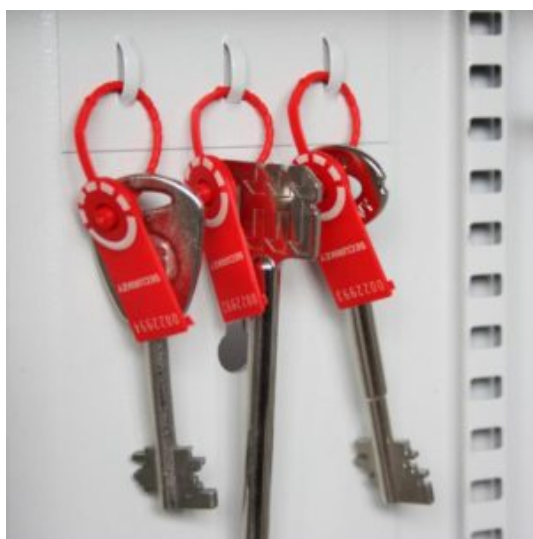
KEY VAULT FOR 600 KEYS IMAGES



Key Vault Interior



Euro Profile Cylinder



Security Seals & Loops



Key Vault 600 Push Button Combination Lock

KEY VAULT FOR 600 KEYS IMAGES



Key Vault 600 Dial Combination Lock



Key Vault 600 Electronic Lock REVO A

Your Securikey Stockist

Every effort has been made to ensure that the information in this brochure is correct. We have a policy of continually developing and improving our products and reserve the right to change specification without notice. By virtue of the Trades Description Act 1968 all measurements and weights must be considered approximate.



Generated 17/11/2018