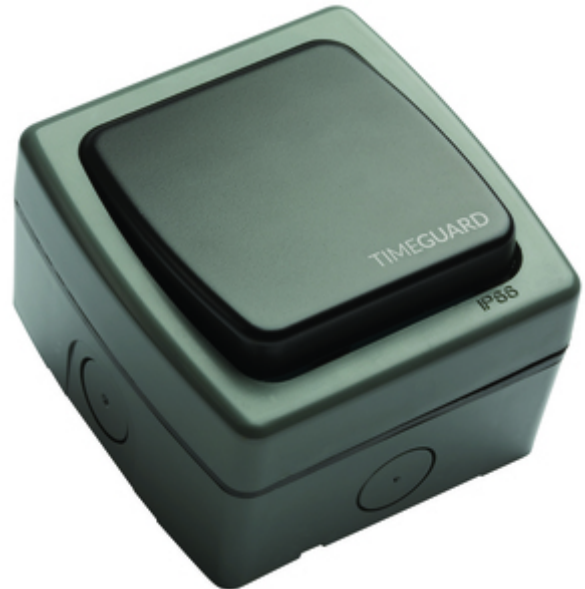


TGVL03

Weathersafe Extreme Single Gang Bell Push Switch (SP)

Features & Benefits

- Backlit neon illuminates switch for dark areas.
- Push to make.
- Multiple 20mm knock outs.
- IP66 weatherproof rating.
- Registered design 000522784 0001.



Technical Data

Operating Voltage	230V AC
Frequency	50Hz
Installation Type	Surface
Earth Class Rating	Class I
Operating Temperature	-5°C to 55°C
Ingress Protection Rating	IP66
Switch type	Single Pole (Single Gang 1 Way)
Mounting Hole Centres (mm)	72 (Top/Bottom), 68 (Left/Right)
Switch rating	13A (3kW) 10AX
Cable Capacity (mm ²)	x3 2.5mm ² Cables
Cable Entry(s)	(Multiple M20 Threaded Screw-Outs Top/Bottom/Sides)

Data sheet

TGVL03

Safety / Weathersafe Extreme

General

Weight (g)	187.5
Height (mm)	96
Width (mm)	92
Depth (mm)	66
Body Construction	Polycarbonate (Impact Resistant)
Product Colour	Grey (Body), Black (Button)
EAN Number	5012483010327
Guarantee Period	3 Years

Line Diagrams

