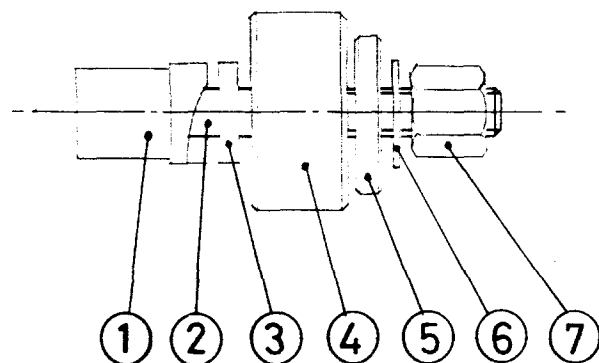


DRG. No. **M915/9-13**  
PART No.



Ⓑ

ITEM N°	PART N°	DESCRIPTION	MATERIAL	N° OFF
①	M915/9-13-1	PUNCH	MS	1
②	B2	SPECIAL BOLT	MS	1
③	M915/9-13-3	LOCATION PLATE	MS	1
④	M915/9-13-2	DIE	MS	1
⑤	W1.	SPECIAL WASHER	MS	1
⑥	STD	8MM WASHER FORM "B"	MS	1.
⑦	N2.	SPECIAL NUT	MS	1.
⑧				

Size:- 159 x 13mm RECTANGULAR HOLE CUTTER.  
MIN LEVER/ROCKER SWITCH.

**MANUFORM**

ALTERATIONS AND NOTES

DO NOT SCALE

**N° Was 1141**

4-12-86

Ⓑ PART N° B2 WAS 1140/4.  
W1 WAS 1140/10.  
N2 WAS 1139/4.

DATE CHANGE NOTE N° ISSU  
15-10-90. 1012 4



SCALE:-1:1

~~ISSUE~~ Sheet 1 of 2

© **MANUFORM**

from whom  
permission must first be  
obtained before any  
article is produced from or  
copy made of this drawing

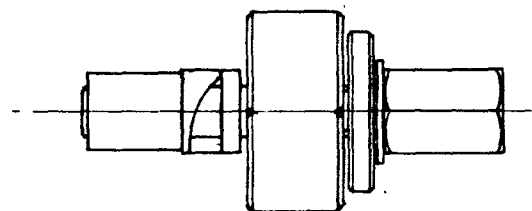
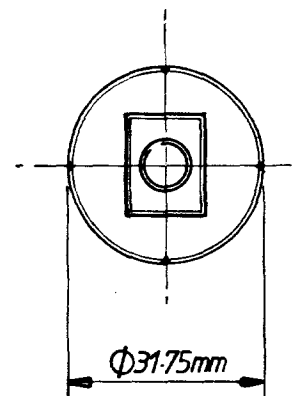
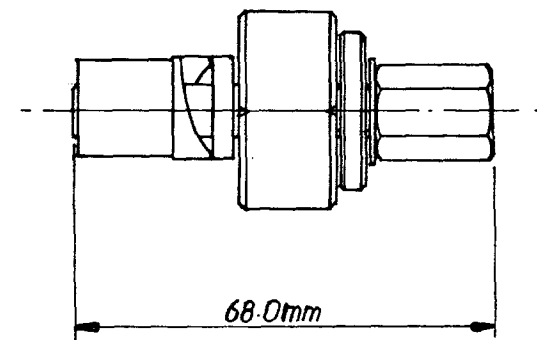
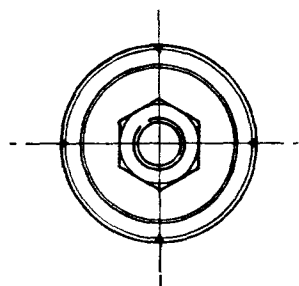
DATE  
20-3-82.

DRAWN  
LSM.

MATERIAL

DRG. No. **M915/9-13**  
PART No.

DRG No. **M915/9 - 13.**  
PART No.



**15.9mm x 13mm RECTANGULAR HOLE CUTTER.**  
MIN. LEVER / ROCKER SWITCH.



CAUSER GRAPHIC 3009/86 (9/87)

**FUTTERS (LONDON) LTD**

ALTERATIONS AND NOTES

DO NOT SCALE

DATE CHANGE NOTE No ISS  
15.10.90 - 1



SCALE: /

~~Sheet 1 of 2~~ Sheet 2 of 2.

©FUTTERS (LONDON) LTD

from whom  
permission must first be  
obtained before any  
article is produced from or  
copy made of this drawing

DATE  
15.10.90.

DRAWN

12/11

MATERIAL

GENERAL TOLERANCE:-  $\pm$  / mm.  
(UNLESS STATED)  
(  $\pm$  / ").

DRG. No. **M915/9 - 13.**  
PART No.