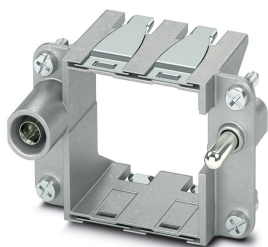


## Module carrier frame - HC-M-B06-MFH-H - 1182087


Please be informed that the data shown in this PDF Document is generated from our Online Catalog. Please find the complete data in the user's documentation. Our General Terms of Use for Downloads are valid (<http://phoenixcontact.com/download>)



Module carrier frame, size: B6, type : for the sleeve side (A, B, C, ...), 4 mm<sup>2</sup> ... 6 mm<sup>2</sup>, application: Module carrier frame



### Key Commercial Data

Packing unit	1 pc
GTIN	 4 063151 218553
GTIN	4063151218553
Weight per Piece (excluding packing)	61.100 g
Custom tariff number	85389099
Country of origin	China
Sales Key	BF7ACD

### Technical data

#### Dimensions

Height	36 mm
Width	34.9 mm
Length	51 mm

#### Ambient conditions

Ambient temperature (operation)	-40 °C ... 125 °C
---------------------------------	-------------------

#### Mechanical characteristics

Conductor cross section	4 mm <sup>2</sup> ... 6 mm <sup>2</sup> (for PE conductor - power side)
	1 mm <sup>2</sup> ... 2.5 mm <sup>2</sup> (for PE conductor - control side)
Connection cross section AWG	12 ... 10 (for PE conductor - power side)
	18 ... 14 (for PE conductor - control side)
Tightening torque	0.8 Nm ... 1.2 Nm (for PE conductor - power side)
	0.5 Nm ... 0.8 Nm (for PE conductor - control side)

# Module carrier frame - HC-M-B06-MFH-H - 1182087

## Technical data

### Mechanical characteristics

Insertion/withdrawal cycles	≥ 500
-----------------------------	-------

### General

Note	This product replaces 1417403 HC-M-B06-MF-H
Type	for the sleeve side (A, B, C, ...)
Size	B6
Series	HC-M-B
Color	silver
Number of module slots	2
Assembly instructions	HC-MHR-PE16 ( 1636981) for PE connection extension to 16 mm².
Connection	Use wire end protection for PE wires (PE connection screws without wire protection) for housings without lateral connectors, max. thread length of the screw connection 12 mm

### Material data

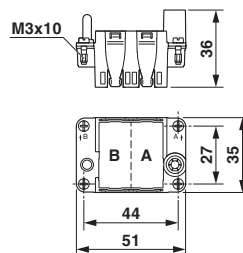
Contact carrier material	Die-cast zinc alloy
--------------------------	---------------------

### Environmental Product Compliance

REACH SVHC	Lead 7439-92-1
China RoHS	Environmentally Friendly Use Period = 50 years
	For details about hazardous substances go to tab "Downloads", Category "Manufacturer's declaration"

## Drawings

Dimensional drawing



Dimensional drawing

## Classifications

eCl@ss

eCl@ss 10.0.1	27440206
eCl@ss 11.0	27440206
eCl@ss 8.0	27440206
eCl@ss 9.0	27440206

# Module carrier frame - HC-M-B06-MFH-H - 1182087

## Classifications

ETIM

ETIM 5.0	EC002312
----------	----------

## Approvals

Approvals

---

Approvals


UL Recognized / CSA


---

Ex Approvals

---

## Approval details

UL Recognized		<a href="http://database.ul.com/cgi-bin/XYV/template/LISEXT/1FRAME/index.htm">http://database.ul.com/cgi-bin/XYV/template/LISEXT/1FRAME/index.htm</a>	E118976
---------------	-------------------------------------------------------------------------------------	-------------------------------------------------------------------------------------------------------------------------------------------------------	---------

CSA		<a href="http://www.csagroup.org/services-industries/product-listing/">http://www.csagroup.org/services-industries/product-listing/</a>	13631
-----	-------------------------------------------------------------------------------------	-----------------------------------------------------------------------------------------------------------------------------------------	-------

## Accessories

Accessories

Coding element

Coding element - HC-CST-MOD - 1636127



Coding peg for coding up to 16 connectors, for HC Modular

---

Coding element - HC-CBU-MOD - 1636130



Coding socket for coding up to 16 connectors, for HC Modular

---

## Module carrier frame - HC-M-B06-MFH-H - 1182087

### Accessories

#### Mounting material

Cable lug - HC-M-MHR-PE16 - 1636981



Cable lug for HEAVYCON-MODULAR; PE connection extension to 16 mm<sup>2</sup>, for crimping with crimp pliers

---

### Additional products

Module carrier frame - HC-M-B06-MFH-B - 1182085



Module carrier frame, size: B6, type : for the panel mounting side (a, b, c, ...), 4 mm<sup>2</sup> ... 6 mm<sup>2</sup>, application: Module carrier frame

---

---