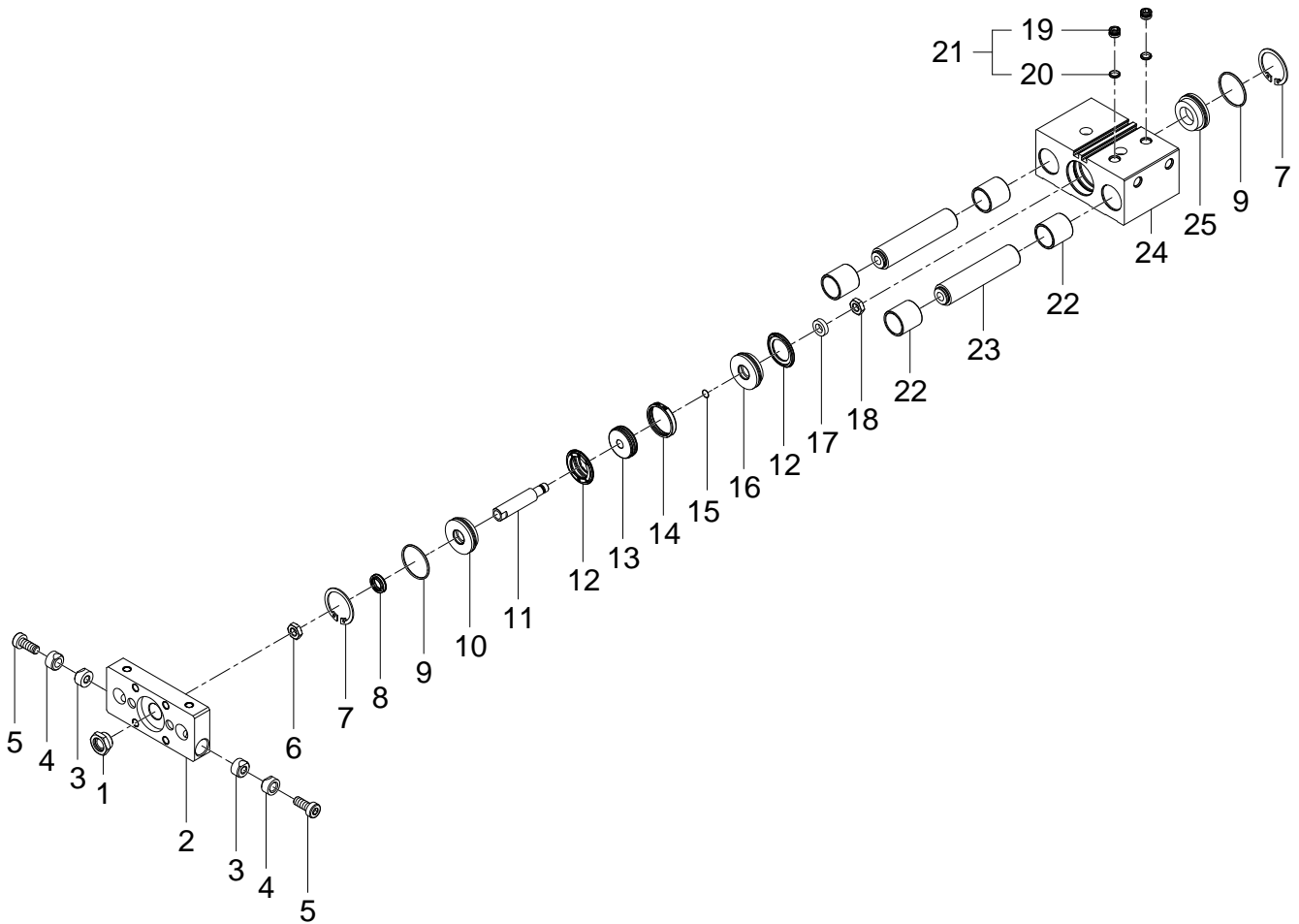


170865 DFM-40-50-P-A-GF Guided drive - Series till 04-2015



170865 DFM-40-50-P-A-GF Guided drive - Series till 04-2015

Pos.	Part no.	Type	Note	Qty.	Unit
A	383667	DFM- 40-PA Set of wearing parts	Spare parts: 8, 9, 12, 15, 20 Replacing the wearing parts	1	PC
1	377739	M10X1.25 Collar nut	Use locking compound 8181256 CYBERBOND TM44 Tightening torque 28.3 Nm / 20.9 lbf ft	1	PC
2	671947	DFM-40-P-A End plate		1	PC
3	368113	M 6 Clamping piece		2	PC
4	368112	M 6 Clamping piece		2	PC
5	209354	ISO 4762-M6X14-10.9 Socket head screw	Use locking compound 8181256 CYBERBOND TM44 Tightening torque 9.9 Nm / 7.3 lbf ft	2	PC
6	386668	M10X1.25 Nut	Use locking compound 8181256 CYBERBOND TM44 Tightening torque 28.3 Nm / 20.9 lbf ft	1	PC
7	368636	J-41 Retaining ring		2	PC
8		WIFC1-12X16,5X4-TPE-U Wiper seal	Not available separately, see position A Lubricate with 684474 LUB-KC1 during assembly	1	PC
9		B-38X1,5-N-NBR70 O-ring ISO3601	Not available separately, see position A Lubricate with 684474 LUB-KC1 during assembly	2	PC
10	713434	DFM- 40- P-A Bearing cap		1	PC
11	368182	KS D04 12 S0063 Piston rod		1	PC
12		ADVU-40 Piston seal	Not available separately, see position A Lubricate with 684474 LUB-KC1 during assembly	2	PC
13		AEVU- 40 Piston magnet	Not available	1	PC
14	338254	36,8X29,2X4,5 Ring magnet		1	PC
15		B-8X1,5-N-NBR75 O-ring ISO3601	Not available separately, see position A Lubricate with 684474 LUB-KC1 during assembly	1	PC
16		ADVU- 40 Piston	Not available	1	PC
17	339835	8,4 X 15 X 4 Ring		1	PC
18	200602	DIN 439-B-M8-04 Hex nut	Use locking compound 8181256 CYBERBOND TM44 Tightening torque 9.5 Nm / 7.0 lbf ft	1	PC
19		G1/8A Plug screw	Not available separately, see position 21	2	PC
20		5,8X8,2X2 Sealing ring	Not available separately, see position 21+999	2	PC
21	116515	G1/8 Plug screw		2	PC
22		DFM-32 Plain bearing	Not available	4	PC
23	368130	DFM-32/40-50-P-A-GF Guide rod		2	PC
24		DFM- 40- 50P-A Housing	Not available Lubricate with 684474 LUB-KC1 during assembly	1	PC
25		DFM- 40- P-A End cap	Not available	1	PC